

Cornubia, 2 Susan Court

Another one sold by Neil!

Presented to the market is this family home that ticks all the boxes when it comes to the modern families "wants and needs".

You want a pool? Yes, it has a beautiful heated pool!

You want a nice low maintenance yard and still have room for the kids to kick a football around? Yes, it has that and an amazing cubby house with views!

You want a Great Suburb and Great Street? Yes, this pocket of Cornubia is a much sort after area, it's close to Chisholm College and it is 5 minutes walk to one of the regions nicest walking tracks.

Other Features include:

*Elevated flat Block with Views

*5 good sized Bedrooms all with built ins.

*Large Master Bedroom with Walk in robe and en-suite

*Open plan living with Oversized European tiles throughout

*2 Pac Kitchen with 90 cm freestanding oven and Gas cook top, quality Dishwasher and



For Sale

Interest over \$1,050,000

View

ljhooker.com.au/659HVG

Contact

Neil Cowan

0432 468 439

ncowan.shailerpark@ljhooker.com.au

Tracey-Lee Duff

0431 380 927

tracey-lee.duff@ljhooker.com.au



LJ Hooker Shailer Park
(07) 3102 0829

Disclaimer: All information contained therein is gathered from relevant third parties sources.

We cannot guarantee or give any warranty about the information provided. Interested parties must rely solely on their own enquiries.

perfectly located to keep an eye on the whole family.

*Large Double garage with remote doors, it could easily be converted into a rumpus room as the Driveway is perfect for a carport.

*Air-conditioned Living area

*Fully insulated with cool and cosy

*3 KW Solar Power System

*Large Rain water Tank

*Fully Fenced

* Large Loft Storage Area.

Cornubia is located 30mins to Brisbane CBD and the Gold coast. It has some great private schools including Chisholm College, has good public transport links and with the new Woolworths Centre Opening this week, it is one of the most sort after suburbs in the region.

Please call Neil Cowan on 0432 468 439 if you have any questions or would like to view the property.

More About this Property

Property ID	659HVG
Property Type	House
Land Area	732 m2

Neil Cowan 0432 468 439

Licensee | ncowan.shailerpark@ljhooker.com.au

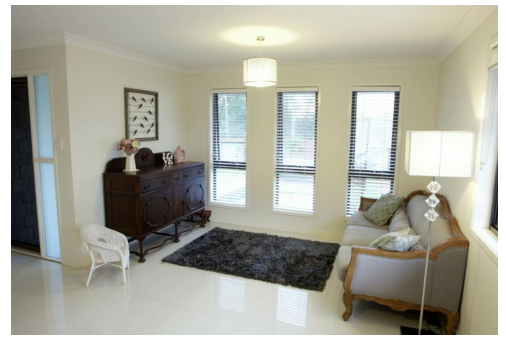
Tracey-Lee Duff 0431 380 927

Licensed Sales Agent | tracey-lee.duff@ljhooker.com.au

LJ Hooker Shailer Park (07) 3102 0829

2/3 Mandew Street, SHAILER PARK QLD 4128

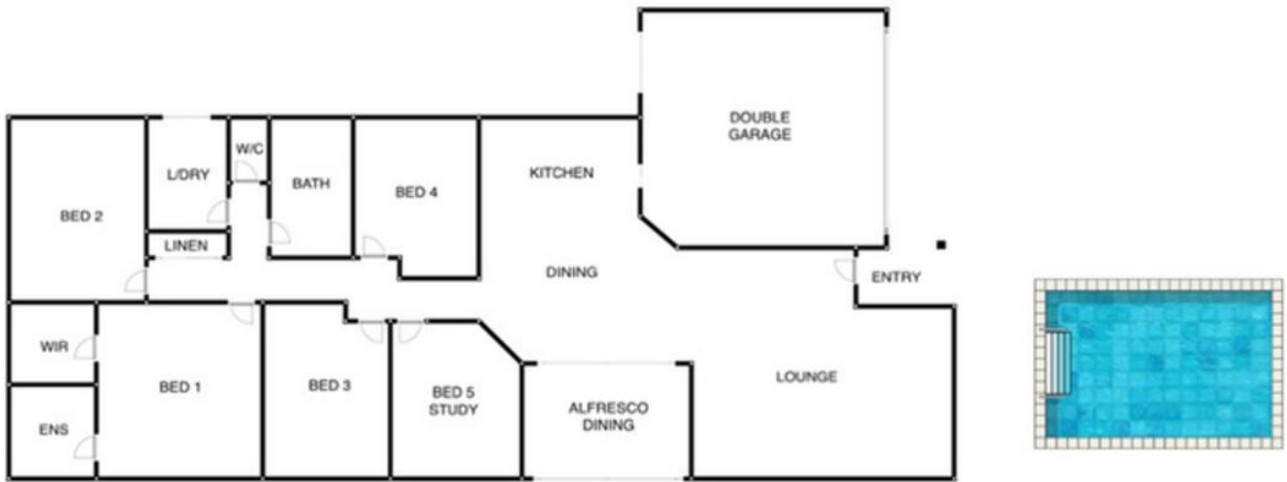
shailerpark.ljhooker.com.au | shailerpark@ljhooker.com.au



Disclaimer: All information contained therein is gathered from relevant third parties sources.

We cannot guarantee or give any warranty about the information provided. Interested parties must rely solely on their own enquiries.

**LJ Hooker Shailer Park
(07) 3102 0829**



FLOOR PLAN INDICATIVE OF LAYOUT ONLY