



6/9 Bottle Brush Circuit, Coomera

## Modern Parkside Living in the Heart of Coomera

Step into a lifestyle of comfort and style with this beautifully presented townhouse, perfectly positioned in a leafy pocket of Coomera directly across from a peaceful park. This stunning residence offers the ideal blend of modern design, relaxed coastal living, and everyday convenience—perfect for families, couples, or professionals alike.

From its thoughtful layout to its high-quality finishes, every detail has been carefully considered to create a welcoming and functional home you'll love coming back to.

### Property Features:

- Impressive 9-foot ceilings enhancing space and natural light
- Ducted air conditioning for year-round comfort
- Three spacious bedrooms with robes and ceiling fans
- Master suite featuring a walk-in robe and large private ensuite
- Open plan living and dining area flowing seamlessly to outdoors
- Gourmet designer kitchen with stone benchtops and electric cooking
- Stylish beach-style timber flooring downstairs with sleek glass railing
- Additional upstairs lounge —perfect as a second living space or retreat
- Ceiling fans throughout the home

3  2  2 

### FOR SALE

Offers Above \$895,000

### VIEW

Sat 20th Jun @ 10:00AM - 10:30AM

### AGENTS

Adam Hope  
0417 654 153  
adam.hope@ljhteam.com.au

Aaron Squires  
0466 824 668  
aaron.squires@ljhteam.com.au

### AGENCY

LJ Hooker Pacific Pines | Helensvale  
(07) 5573 2099

All information contained therein is gathered from relevant third parties sources.  
We cannot guarantee or give any warranty about the information provided.  
Interested parties must rely solely on their own enquiries.



Modern main bathroom complete with an extra-large bath  
Covered outdoor entertaining area overlooking the park  
Double lock-up garage with internal access  
Fully fenced front garden (maintenance included)  
Freshly painted throughout for a crisp, modern feel  
Plumbed water connection for fridge

**Location Highlights:**

Situated within the catchment for Coomera Rivers State School and close to a range of highly regarded state and private schools, childcare centres, and shopping hubs, this location offers unbeatable convenience.

**Just minutes from:**

Westfield Coomera  
Coomera Train Station  
Major theme parks  
Public transport links  
M1 motorway for easy commuting to Brisbane or Northern NSW

**The Lifestyle You've Been Waiting For**

Wake up to tranquil park views and enjoy a relaxed coastal vibe while still being connected to everything you need. Whether you're entertaining guests, unwinding in your private outdoor space, or enjoying the vibrant local community-this home offers the complete lifestyle package.

**Disclaimer:**

All information contained is gathered from relevant third party sources. We cannot guarantee or give any warranty about the information provided. Interested parties must rely solely on their own enquiries.

**MORE DETAILS**

Property ID                    365EGMK  
Property Type                Townhouse

**Adam Hope 0417 654 153**

Owner | Principal | Sales Director | [adam.hope@ljhteam.com.au](mailto:adam.hope@ljhteam.com.au)

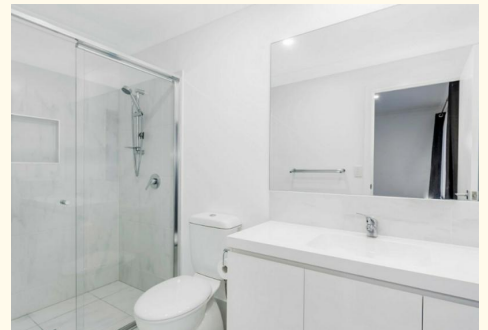
**Aaron Squires 0466 824 668**

Sales Specialist | [aaron.squires@ljhteam.com.au](mailto:aaron.squires@ljhteam.com.au)

**LJ Hooker Pacific Pines | Helensvale (07) 5573 2099**

8 Discovery Drive, HELENSVALE QLD 4212

[pacificpines-helensvale.ljhooker.com.au](http://pacificpines-helensvale.ljhooker.com.au) | [admin@ljhteam.com.au](mailto:admin@ljhteam.com.au)





Bottle Brush Circuit, Coomera

TOTAL APPROX. - FLOOR AREA 163.28 SQ.M

Whilst every attempt has been made to ensure the accuracy of the floor plan contained here, measurements of doors, windows, rooms and any other items are approximate and no responsibility is taken for any error, omission, or mis-statement. This plan is for illustrative purposes only and should be used as such by any prospective purchaser.