
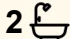





29 Paperbark Crescent, Coomera

4  2  2 

## The Lifestyle Upgrade You've Been Waiting For - Parkside Family Living at Its Best

**FOR SALE**  
Contact Agent

**VIEW**  
Sun 26th Apr @ 10:30AM - 11:00AM

**AGENTS**  
Nykisha Brown  
0435 990 266  
nbrown@ljhgc.com.au

Liza Neuss  
0447 006 098  
liza@ljhgc.com.au

**AGENCY**  
LJ Hooker Coomera  
(07) 5585 7888

This is not just a house, it's the lifestyle you've been waiting for! Step into this beautifully presented, light-filled 4-bedroom family haven, perfectly positioned in a peaceful parkland setting. Designed with space, comfort, and style in mind, it's ideal for growing families, entertainers, and nature lovers alike. Don't miss your chance to inspect this standout home - it won't last long!

Imagine this: High vaulted ceilings greet you as you walk through the front door, instantly creating a sense of openness and light. The natural flow from one living zone to the next makes this home as practical as it is beautiful.

Love to cook? The modern kitchen features a gas cooktop, dishwasher, and plenty of bench space-perfect for family meals or entertaining friends.

Movie nights are a breeze in your very own carpeted theatre room, complete with air-conditioning and ceiling fan for year-round comfort.

All information contained therein is gathered from relevant third parties sources. We cannot guarantee or give any warranty about the information provided. Interested parties must rely solely on their own enquiries.

 **LJ Hooker**

Need extra space? The third tiled living area includes a study nook, ideal for working from home or keeping an eye on homework while you cook dinner.

Outdoor living at its best - The living area open onto a covered patio, ideal for BBQs, morning coffees, or simply relaxing while the kids play in the fully fenced backyard.

Bedrooms? There are four in total, three with ceiling fans, and a large master suite featuring air-conditioning, walk-in robe and stylish ensuite for your own private retreat.

The double automatic garage includes internal access for added convenience, and there's ample space outside for play, pets, or gardening-all just across the road from lush green parkland!

Key Highlights of 29 Paperbark Crescent, Coomera :

- 4 generous bedrooms with ceiling fans
- Spacious master suite with walk-in robe, air-conditioning & private ensuite
- Modern kitchen with gas cooktop, dishwasher & ample storage
- Open-plan tiled family/dining area with air-conditioning & ceiling fan
- Carpeted theatre room with air-conditioning & ceiling fan - perfect for movie nights
- Additional tiled living space with study nook, air-conditioning & ceiling fan
- 4 Air-conditioning units - master bedroom, media room, living dining room and another one positioned in the second living area to help cool the adjoining bedrooms
- Living area open to the covered alfresco patio - ideal for entertaining
- Double automatic garage with internal access for convenience
- Fully fenced, large backyard - safe for kids and pets, located directly across from parkland
- Side access ability
- Brand new carpet and Paint through out.
- Built in 2016
- Block size: 533m2 Easement free
- Currently vacant ready for its new owner to move in and make it home
- Walking distance to Picnic Creek State School
- Short drive to St Joseph's School, Pimpama Junction, and Westfield Coomera

Prime Location with Exceptional Access to Key Amenities:

- Everyday convenience: Just minutes from the newly opened Costco Coomera, and only a short drive to the upcoming Coomera Hospital, set to open in 2027.
- Entertainment & lifestyle: Westfield Coomera Town Centre is just 10 minutes away, featuring a wide range of dining options, cinemas, and retail outlets.
- Recreation at your doorstep: Enjoy a round at the nearby Gainsborough Greens Golf Course, or head to Moreton Bay or the Coomera River for boating and fishing adventures.
- Family-focused community: Walk the kids to Picnic Creek State School in just 5 minutes and reach St Joseph's School in under 3 minutes by car.
- Whilst every effort has been made to ensure the accuracy of these particulars, no warranty is given by the owner or the agent as to their accuracy. Interested parties should not rely on these particulars as representations of fact but must instead satisfy themselves by inspection or otherwise.

## MORE DETAILS

Property ID 43RYGTJ  
Property Type House  
House Size 220 m2  
Land Area 533 m2  
Including Air Conditioning  
Dishwasher

**Nykisha Brown 0435 990 266**

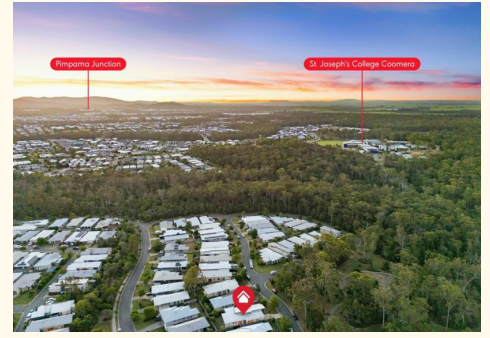
Sales Specialist | [nbrown@ljhgc.com.au](mailto:nbrown@ljhgc.com.au)

**Liza Neuss 0447 006 098**

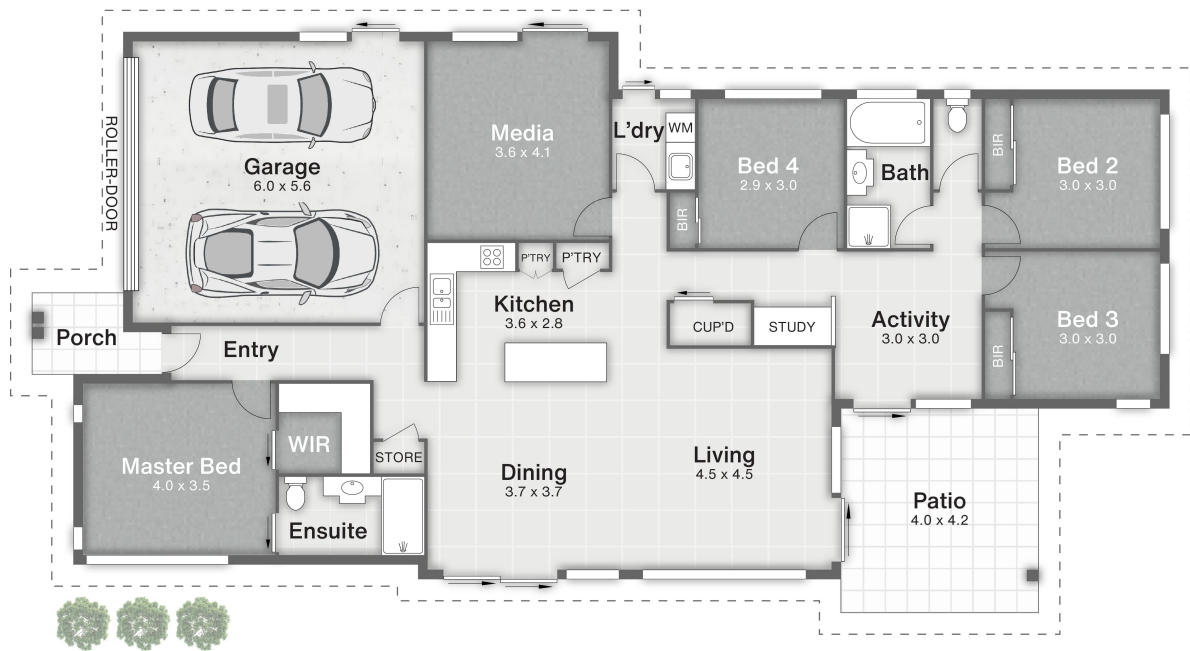
Sales Associate to Nicole Hintz Independent Contractor |  
[liza@ljhgc.com.au](mailto:liza@ljhgc.com.au)

**LJ Hooker Coomera (07) 5585 7888**

The Hub, 5/90 Days Road, UPPER COOMERA QLD 4209  
[coomera.ljhooker.com.au](http://coomera.ljhooker.com.au) | [coomera@ljhgc.com.au](mailto:coomera@ljhgc.com.au)



All information contained therein is gathered from relevant third parties sources.  
We cannot guarantee or give any warranty about the information provided.  
Interested parties must rely solely on their own enquiries.



29 Paperbark Crescent **COOMERA**

4 | 2 | 2 | 220m<sup>2</sup>

**LJ Hooker**

Coomera Ormeau Tamborine Mountain

All dimensions are approximate; they are subject to errors and inaccuracies and no liability will be accepted. Plans are shown for marketing purposes only.

All information contained therein is gathered from relevant third parties sources. We cannot guarantee or give any warranty about the information provided. Interested parties must rely solely on their own enquiries.

**LJ Hooker**