



6/16 Coyne Street, Coolangatta

## SOLD BY ERIN KING & RACHAEL SHERRIFF

Just 150m from the sands of Kirra Beach, this 2-bedroom apartment delivers modern coastal style, income, and a true barefoot lifestyle. Located in a boutique block of 8, the front-facing, first-floor position offers privacy, natural light.

- 2 spacious bedrooms with built-ins
- Updated kitchen
- Bathroom with internal laundry
- Private balcony + front and rear access
- Boutique block of 8 with off-street parking
- Light-filled, renovated, and move-in ready

Positioned in a sought-after coastal pocket in trending Kirra, this apartment puts you within walking distance of everything that makes this area special. From world-renowned surf breaks like Kirra Point, to artisan coffee spots, fine dining, and boutique shopping - it's all at your fingertips.

You're also minutes from Coolangatta, major shopping centres, the Gold Coast International Airport, and Southern Cross University - yet tucked away in a peaceful street that offers the perfect blend of convenience and tranquillity.

All information contained therein is gathered from relevant third parties sources. We cannot guarantee or give any warranty about the information provided. Interested parties must rely solely on their own enquiries.

2 🏠 1 🚿 1 🚗

**FOR SALE**  
Contact Agent

### AGENTS

Erin King  
0439 060 535  
erin@ljhookerct.com.au

Rachael Sherriff  
0412 880 337  
rachael@ljhookerct.com.au

### AGENCY

LJ Hooker Coolangatta | Tweed  
(07) 5536 5577



Renovated Apartments with this coastal design detail so close to the beach are highly sought after. This is an opportunity to pounce on before it gets snapped up by a very savvy new owner.

Building information:

- Building name: Haven Court
- Number of lots/units: 8 lots
- Age of building: Built-in 1975
- Land size of building: 1,012m2 approximately

Outgoings:

- Body Corporate: \$56.76 per week
- Council Rates: \$1,794.12 per half year
- Water Rates: \$322.91 per quarter

Land Size: 1012m2 - Zoning: Medium Density Residential (STCA - potential for boutique redevelopment up to 10 levels)

Want to know more?

Contact us to receive the property ebook with floorplan and recent sales within the surrounding area to give you some guide of value.

Please contact us to arrange your viewing.

Erin King 0439 060 535  
Instagram: @erinking.ljhooker

Rachael Sherriff 0412 880 337  
Instagram: @rachael\_sherriff\_ljhooker

Disclaimer:

All information (including but not limited to the property area, floor size, price, address and general property description) is provided as a convenience to you, and has been provided to LJ Hooker by third parties. LJ Hooker is unable to definitively confirm whether the information listed is correct or 100% accurate. LJ Hooker does not accept any liability (direct or indirect) for any injury, loss, claim, damage or any incidental or consequential damages, including but not limited to lost profits or savings, arising out of or in any way connected with the use of any information, or any error, omission or defect in the information, contained on the Website. Information contained on the Website should not be relied upon and you should make your own enquiries and seek legal advice in respect of any property on the Website. Prices displayed on the Website are current at the time of issue, but may change.

## MORE DETAILS

Property ID M60HEZ  
Property Type Unit  
Including Toilets (1)  
Balcony  
Built-in-Robes

**Erin King 0439 060 535**

Sales & Marketing Specialist | [erin@ljhookerct.com.au](mailto:erin@ljhookerct.com.au)

**Rachael Sherriff 0412 880 337**

Sales & Marketing Specialist | [rachael@ljhookerct.com.au](mailto:rachael@ljhookerct.com.au)

**LJ Hooker Coolangatta | Tweed (07) 5536 5577**

5/100 Griffith Street, COOLANGATTA QLD 4225

[coolangattatweed.ljhooker.com.au](http://coolangattatweed.ljhooker.com.au) | [enquiries@ljhookerct.com.au](mailto:enquiries@ljhookerct.com.au)



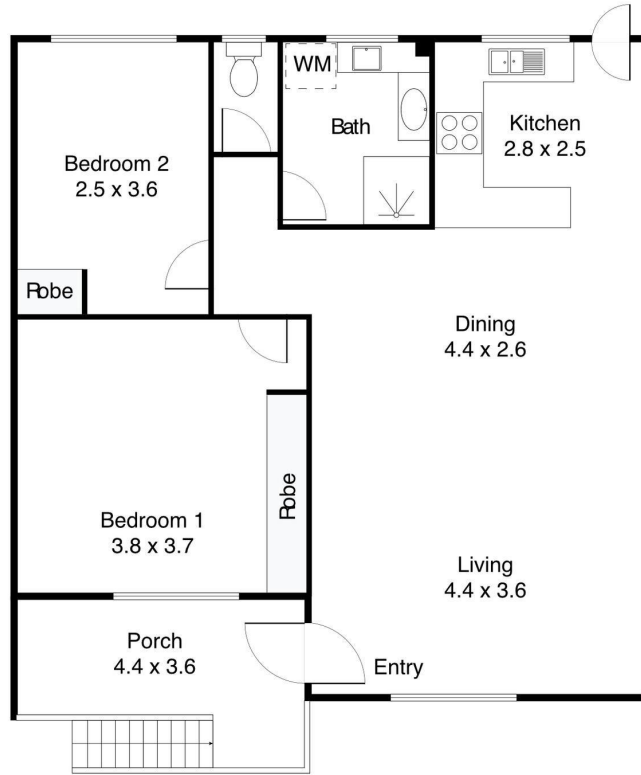
All information contained therein is gathered from relevant third parties sources.  
We cannot guarantee or give any warranty about the information provided.  
Interested parties must rely solely on their own enquiries.

6/16 Coyne Street  
Kirra



Southern Gold Coast

Erin King 0439 060 535  
Rachael Sherriff 0412 880 337



TOTAL INTERNAL AREA: 67M<sup>2</sup> | TOTAL EXTERNAL AREA: 6M<sup>2</sup>A | TOTAL AREA: 73M<sup>2</sup>

LJHooker

All information contained therein is gathered from relevant third parties sources.  
We cannot guarantee or give any warranty about the information provided.  
Interested parties must rely solely on their own enquiries.

