



6 Eelmat Court, Coningham

Modern Coastal Living in Peaceful Coningham

Discover your ideal coastal retreat at 6 Eelmat Court, Coningham - a beautifully designed nearly new residence set on an elevated, north-facing allotment of approximately 2000m². The site enjoys sweeping mountain and water views and is nestled in a peaceful cul-de-sac, just a short stroll from the popular Coningham beaches, with the cafe, Primary School, Hotel and services of Snug nearby. In 2021, this stunning 4 bedroom home was built to modern standards, offering approx. 164 sqm of thoughtfully planned living space. The layout is open and light filled, with an emphasis on indoor-outdoor flow to take full advantage of the outlook and flowing sunlight. The master suite enjoys generous proportions and the remaining three bedrooms are well-appointed — making this an ideal choice for families or those looking for a quality lifestyle home. Built in a recent year means minimal maintenance and the opportunity to move in with peace of mind.

Outside, the generous block presents opportunities for landscaped gardens, alfresco entertaining, or future expansion (subject to approvals). The elevated positioning, combined with its north-facing aspect, allows for passive solar design giving you year round comfort. The sprawling timber deck is a winner. You can invite family and friends over for BBQs, drinks and soak in the sun and views on offer.

4 2 2

FOR SALE

Offers Over \$1,095,000

AGENTS

Michael Kingston
0408 145 380
mkingston@ljhpinnacle.com.au

Nereda Ball
0497 305 571
rentals@ljhpinnacle.com.au

AGENCY

LJ Hooker Pinnacle Property
(03) 6272 8177

All information contained therein is gathered from relevant third parties sources. We cannot guarantee or give any warranty about the information provided. Interested parties must rely solely on their own enquiries.



The nearby double garage has car parking space as well as a storage place to lock up your valuables……. anyone visiting the property with be happily surprised with the roominess and extra additions inside.

This property is ready for you to step in and begin enjoying the lifestyle that Coningham offers.

Don't miss this rare opportunity: a large, near new four-bedroom home on a generous coastal allotment with a sunny outlook, tranquillity and convenience. For further details, inspection times and to explore the full potential, please get in touch.

The information contained herein has been supplied to us and we have no reason to doubt its accuracy, however, cannot guarantee it. Accordingly, all interested parties should make their own enquiries to verify this information.

MORE DETAILS

Property ID	DFJ1F
Property Type	House
House Size	190 m2
Land Area	2000 m2
Including	Ensuite Air Conditioning Toilets (3) Deck Dishwasher Workshop Built-in-Robes Remote Garage

Michael Kingston 0408 145 380

Property Representative | mkingston@ljhpinnacle.com.au

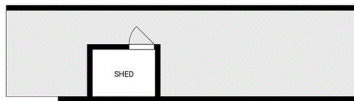
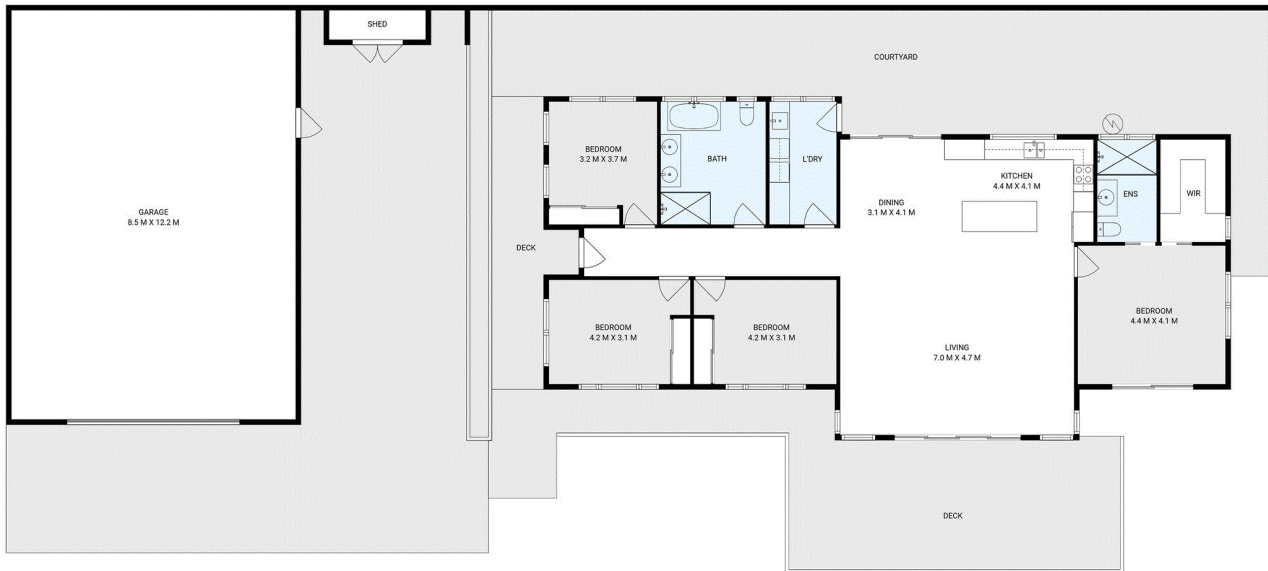
Nereda Ball 0497 305 571

Senior Property Manager | rentals@ljhpinnacle.com.au

LJ Hooker Pinnacle Property (03) 6272 8177

402 Main Road, GLENORCHY TAS 7010
pinnacleproperty.ljhooker.com.au | hello@ljhpinnacle.com.au





6 Elmat Court, Coningham

House area: 190 sqm

Areas and dimensions are approximate and therefore this floor plan should only be used for illustrative purposes.

Real Estate Marketing by nextcreative.com.au

