

14 Point Parade, Congo

Room to Grow. Space to Breathe. Steps to the Beach.

Perfectly positioned in the tightly held coastal enclave of Congo, directly opposite the pristine sands of Congo Beach, this beautifully renovated, east-facing home delivers the ultimate blend of space, flexibility, and relaxed coastal living.

Set on a generous 910sqm block, the home has been thoughtfully designed across two levels to cater to families of all stages - whether you're growing, accommodating guests, or simply seeking a peaceful seaside escape

A Home Designed for Living

Upstairs, the light-filled heart of the home showcases a brand-new L-shaped kitchen complete with stone benchtops, breakfast bar, dishwasher, and soaring raked ceilings. The open-plan living and dining area flows effortlessly, capturing calming sea views and connecting to a unique mezzanine level above - the perfect retreat with a hammock for quiet moments.

The master suite is also positioned on this level, featuring built-in robes and a private ensuite, creating a peaceful sanctuary away from the rest of the home.

Downstairs offers exceptional versatility, with four bedrooms, two bathrooms (including separate toilet and integrated laundry), and a

5 3 1

FOR SALE

\$1,545,000

VIEW

By Appointment

AGENTS

Steven Hutcheson
0407 226 603
steven.hutcheson@ljhooker.com.au

AGENCY

LJ Hooker Narooma
(02) 4476 1000

All information contained therein is gathered from relevant third parties sources.
We cannot guarantee or give any warranty about the information provided.
Interested parties must rely solely on their own enquiries.

LJ Hooker

second living area with direct access to the yard - ideal for kids, guests, or multi-generational living.

Outdoor Living & Coastal Lifestyle

Step outside to a newly constructed rear deck, complete with BBQ area and outdoor shower - perfect after a morning swim or surf. The expansive block slopes gently to the rear, offering space to further enhance, landscape, or simply enjoy the natural surrounds. Located just across a quiet lane from the beach, you'll enjoy effortless access to the sand and surf, while also being surrounded by the natural beauty of Eurobodalla National Park. Explore kilometres of pristine coastline with walking tracks that wind through bushland, cliffs, and secluded beaches - offering an unmatched lifestyle for nature lovers, surfers, and adventurers alike. Beyond the natural beauty, the home is also within easy reach of some of the South Coast's best food and beverage experiences. Enjoy fresh seafood, vibrant cafés, and waterfront dining in nearby Narooma and Moruya, along with boutique eateries and relaxed coastal venues throughout the region - perfect for long lunches, weekend dining, and entertaining guests. The soon-to-be-completed Eurobodalla Regional Hospital (due late 2027) is less than a 15-minute drive away - adding a valuable layer of convenience and long-term appeal to this already exceptional coastal offering.

Conveniently positioned within easy reach of:

- Moruya - approx. 17 minutes
- Narooma - approx. 20 minutes
- Batemans Bay - approx. 40 minutes
- Canberra - approx. 2.5 hours
- Sydney - approx. 4 hours

Comfort, Convenience & Capability

- 15,000L water tank
- Septic system
- Town power & rubbish collection
- Electric hot water system
- Reverse cycle air conditioning
- NBN available
- Additional storage room under carport

The Opportunity

Homes in Congo are tightly held - and for good reason. Offering a rare combination of space, flexibility, and an unbeatable coastal position, this is a property that adapts to your lifestyle while delivering the relaxed beachside living so many aspire to. Whether as a permanent residence, holiday home, or investment - this is coastal living done right.

MORE DETAILS

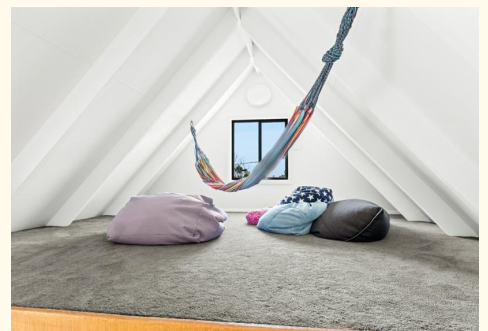
Property ID	3SXHMM
Property Type	House
Land Area	910 m2

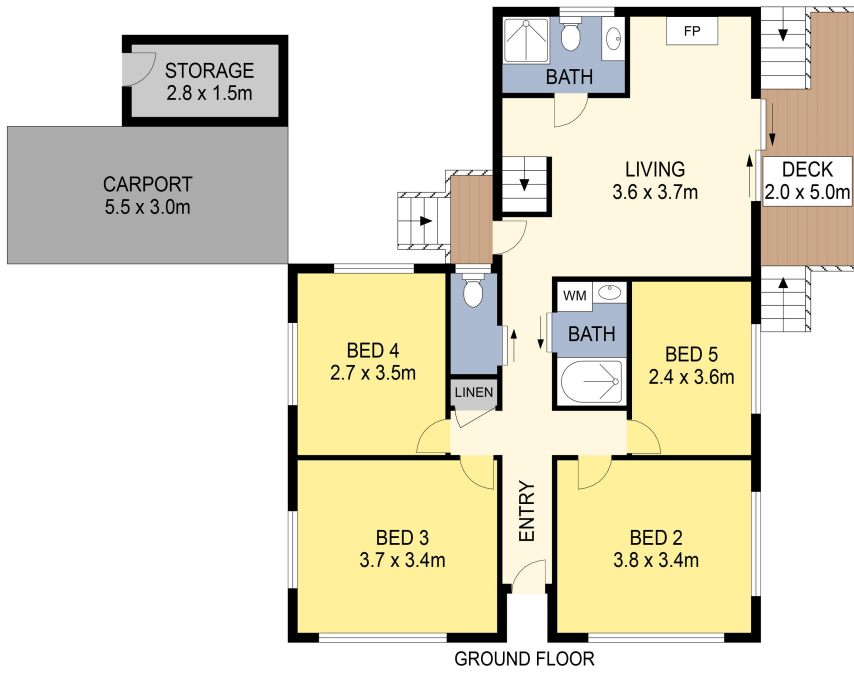
Steven Hutcheson 0407 226 603

Licensed Real Estate Agent | steven.hutcheson@ljhooker.com.au

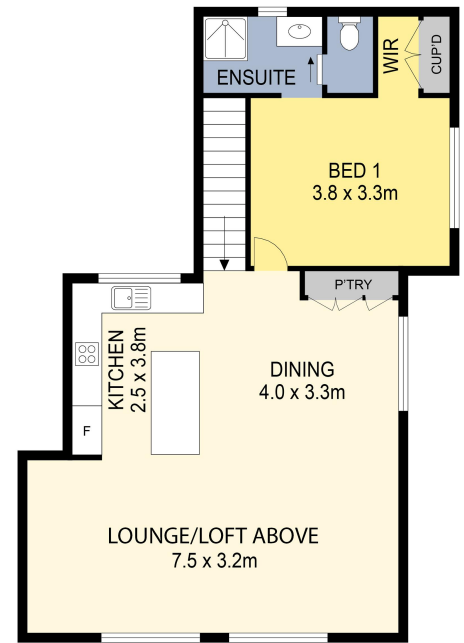
LJ Hooker Narooma (02) 4476 1000

Shop 6, 4 -6 Noorooma Crescent, NAROOMA NSW 2546
narooma.ljhooker.com.au | narooma@ljhooker.com.au





GROUND FLOOR



FIRST FLOOR

PLANS SHOWN ONLY INDICATIVE OF LAYOUT. DIMENSIONS ARE APPROXIMATE.



14 Point Parade, Congo



All information contained therein is gathered from relevant third parties sources. We cannot guarantee or give any warranty about the information provided. Interested parties must rely solely on their own enquiries.

