



## Collie, 1A Coverley Drive

### INVESTORS TAKE NOTE!

Brick and tile 2 bedroom duplex unit. Currently leased until August 2024 at \$320 per week, this investment opportunity will impress on inspection! Great size unit with good size backyard and rear access this will not last, call today!

#### WHY BUY ME:

- Lounge area with curtains, blinds & carpet underfoot
- Dining area with R/C & industrial lino underfoot
- Kitchen area features single sink, cupboard space, electric oven/stove & industrial lino
- Laundry space with single wash trough & separate toilet
- King size master suite with curtains & carpet underfoot
- Queen size minor bedroom with curtains & carpet underfoot



**Disclaimer:** All information contained therein is gathered from relevant third parties sources. We cannot guarantee or give any warranty about the information provided. Interested parties must rely solely on their own enquiries.



#### For Sale

Please Call

#### View

[ljhooker.com.au/15A0HND](http://ljhooker.com.au/15A0HND)

#### Contact

##### Mitch Davidson

0408 910 337

[mitch.davidson@ljhsouthwest.com.au](mailto:mitch.davidson@ljhsouthwest.com.au)

##### Emily Chappell

0447 340 344

[Emily.chappell@ljhsouthwest.com.au](mailto:Emily.chappell@ljhsouthwest.com.au)

**LJ Hooker Property South West WA**  
**(08) 9791 6880**

- Large main bathroom features vanity, bath & shower
- Quantum solar heat pump
- Garden Shed
- Large size yard
- Security screens

For more information contact Mitch Davidson or Emily Chappell, your Local Collie region specialists TODAY on 0408910337 or 0447340344.

Land Rates: Approx. \$1,623.00 p.a.

Water Rates: Approx. \$1,525.99 p.a.

Land Size: 440m<sup>2</sup>

Build Year: 1983

## More About this Property

**Property ID** 15A0HND

**Property Type** Unit

**Land Area** 440 m<sup>2</sup>

### Mitch Davidson

Licensed Sales Agent / Branch Manager - Collie |  
mitch.davidson@ljhsouthwest.com.au

### Emily Chappell

Buyers Representative for Mitch Davidson |  
emily.chappell@ljhsouthwest.com.au

### LJ Hooker Property South West WA (08) 9791 6880

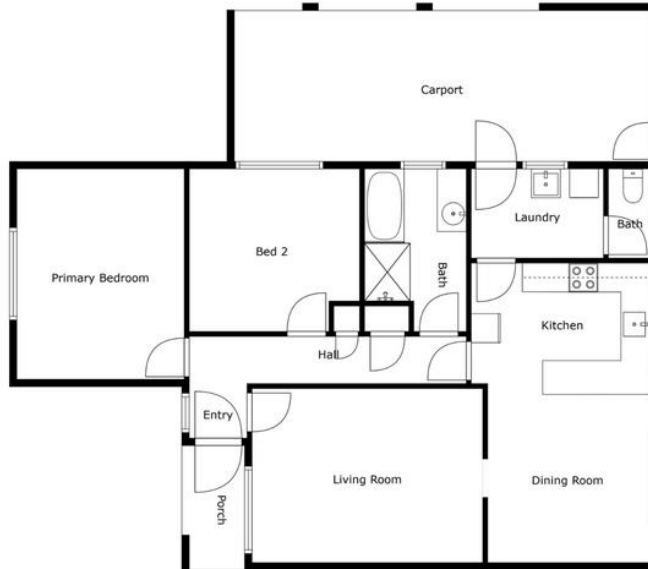
130 Victoria Street, BUNBURY WA 6230

southwestwa.ljhooker.com.au | bunbury@ljhsouthwest.com.au



**LJ Hooker Property South West WA  
(08) 9791 6880**

**Disclaimer:** All information contained therein is gathered from relevant third parties sources. We cannot guarantee or give any warranty about the information provided. Interested parties must rely solely on their own enquiries.



1A COVERLEY DRIVE, COLLIE WA 6225

OFFERED BY: MITCH DAVIDSON

0408 910 337  
mitch.davidson@ljhsouthwest.com.au



FLOOR	FINISHED	
	M <sup>2</sup>	
FLOOR 1	90M <sup>2</sup>	
TOTAL	90 M <sup>2</sup>	

\*\*\*PREPARED FOR THE EXCLUSIVE USE OF MITCH DAVIDSON, LJ HOOKER SOUTH WEST. MEASUREMENTS MAY NOT BE 100% ACCURATE, IF CRITICAL BUYER TO VERIFY\*\*



**LJ Hooker Property South West WA**  
**(08) 9791 6880**

**Disclaimer:** All information contained therein is gathered from relevant third parties sources. We cannot guarantee or give any warranty about the information provided. Interested parties must rely solely on their own enquiries.