

Collie, 35 Telfer Crescent

Charming Country Character Home, 1285m² Block —"AS IS" Sale

Embrace the peaceful lifestyle of country living with this character rich 3 bedroom, 1 bathroom home, ideally positioned on a generous 1285 square meter block in the heart of Collie. Set directly opposite expansive bushland, you'll enjoy tranquil views and fresh country air from the comfort of your front porch.

This welcoming home offers an open plan lounge and kitchen area, perfect for relaxed family living. Stay warm through winter with a charming combustion heater, and cool in summer thanks to the air cooler box in the living area. Corrugated iron features throughout the home add a rustic charm, enhancing the true country feel.

High ceilings and classic styling bring space and personality, while the large backyard, complete with a beautiful weeping mulberry tree, offers plenty of room for gardens, pets, or even future projects. Gas pipes are in place, should you wish to connect.



Disclaimer: All information contained therein is gathered from relevant third parties sources. We cannot guarantee or give any warranty about the information provided. Interested parties must rely solely on their own enquiries.

3 1 0

For Sale
Offer Over \$299,000

View
By Appointment

Contact
Rachel Ned MacLeod-Paterson
0488 556 452
rachel.ned@ljhsouthwest.com.au

LJ Hooker Property South West WA
(08) 9791 6880

This property is being sold "AS IS", offering an excellent opportunity for those looking to add value or simply enjoy a slower paced lifestyle.

Property Highlights:

- 3 bedrooms
- 1 bathroom
- Open plan kitchen and lounge
- Combustion wood heater
- Air cooler box in the living area
- High ceilings throughout
- Corrugated iron and character features
- Vast bushland views from the front porch
- Huge backyard with weeping mulberry tree

Please register your interest in Propps <https://prop.ps//letT7tgQFNTn>

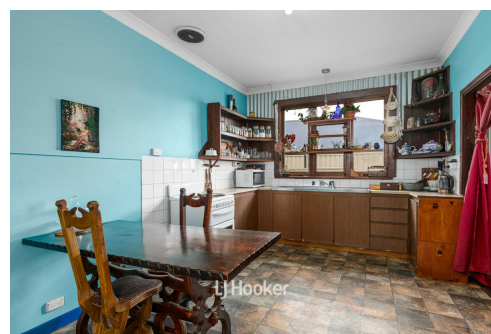
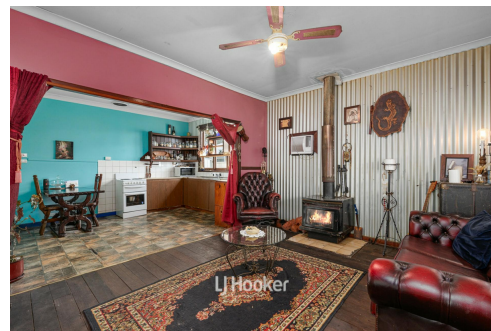
Disclaimer: Whilst every care has been taken in the preparation of this advertisement and the approximate outgoings, all information supplied by the seller and the seller's agent is provided in good faith. Prospective purchasers are encouraged to make their own enquiries to satisfy themselves on all pertinent matters. Images are for illustrative purposes.

More About this Property

Property ID	181EHND
Property Type	House
House Size	94 m2
Land Area	1285 m2
Including	Toilets (1)

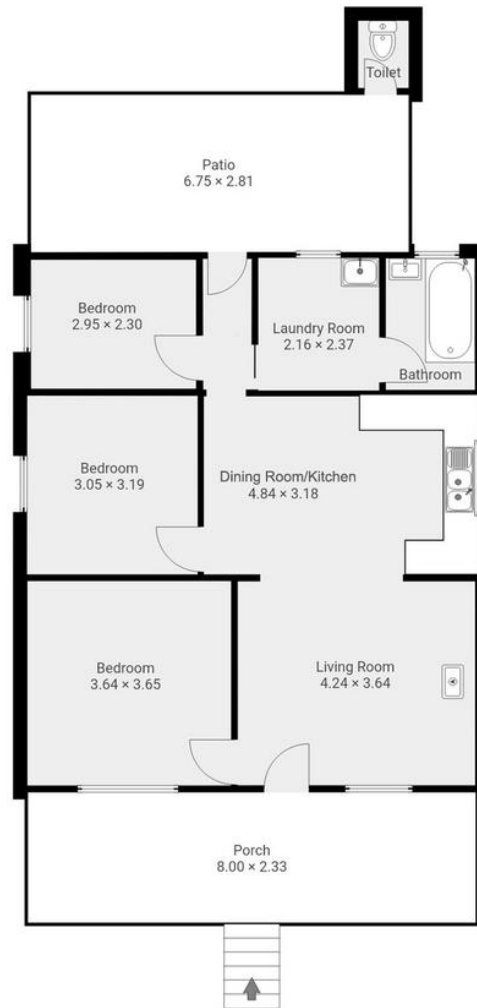
Rachel Ned MacLeod-Paterson 0488 556 452
Sales Consultant | rachel.ned@ljhsouthwest.com.au

LJ Hooker Property South West WA (08) 9791 6880
130 Victoria Street, BUNBURY WA 6230
southwestwa.ljhooker.com.au | bunbury@ljhsouthwest.com.au



Disclaimer: All information contained therein is gathered from relevant third parties sources. We cannot guarantee or give any warranty about the information provided. Interested parties must rely solely on their own enquiries.

LJ Hooker Property South West WA
(08) 9791 6880



Please note this floor plan is for marketing purposes and is to be used as a guide only.
Measurements are approximate and are for illustrative purposes only