

Collie, 2 Moore Street

Character & Charm



Welcome to this beautifully presented character home, offering three bedrooms and one bathroom in a charming, elevated position looking over Wyvern Park. The large lounge room boasts a tile fireplace with a timber mantle and cozy sunroom to the side which makes a perfect spot for your home office, capturing the warmth of the winter sun while the café blinds keeps things cool during the summer months. All three bedrooms are of generous size with high ceilings. The drawcard here Ladies and Gentlemen is the detached fully lined games room and patio area, perfect for all year round entertaining. If you want a property that ticks all the boxes do not pass this one up!

Why Buy Me:

- Weatherboard home with Iron roof
- Double length carport, suitable for boat or caravan
- Kitchen features island bench, corner pantry, double sink, electric stove and reverse cycle air-conditioning



Disclaimer: All information contained therein is gathered from relevant third parties sources. We cannot guarantee or give any warranty about the information provided. Interested parties must rely solely on their own enquiries.

For Sale
Offers Over \$449,000

View
ljhooker.com.au/17CRHND

Contact
Mitch Davidson
0408 910 337
mitch.davidson@ljhsouthwest.com.au

Emily Chappell
0447 340 344
Emily.chappell@ljhsouthwest.com.au

LJ Hooker Property South West WA
(08) 9791 6880

- Dining area with timber blinds and lino flooring
- Lounge area features inbuilt tile fire, jarrah mantle and carpet underfoot
- Sunroom
- Queen size master suite with roller blinds and carpet underfoot
- 2 Queen size minor bedrooms featuring high ceilings, roller blinds and carpet underfoot
- Main bathroom with pedestal vanity and large corner shower
- New electric hot water system
- Games room with meters stove, café style blinds, single sink and built in barbeque
- Powered workshop with meters stove and PA door entry
- Corner block
- Garden and wood sheds
- Side Access
- Established gardens and vegetable beds
- Manual reticulation
- Solar Panels
- Close to Deli and Primary School

For more information contact Mitch Davidson or Emily Chappell, your Local Collie region specialists TODAY on 0408910337 or 0447340344.

Land Rates: Approx. \$1,768.78 p.a.

Water Rates: Approx. \$1,564.13 p.a.

Land Size: 993m2

Build Year: 1951

Disclaimer: whilst every care has been taken in the preparation of this advertisement and the approximate outgoings, all information supplied by the seller and the sellers agent is provided in good faith. Prospective purchasers are encouraged to make their own enquiries to satisfy themselves on all pertinent matters. Images are for illustrative purposes.

More About this Property

Property ID	17CRHND
Property Type	House
Land Area	993 m2

Mitch Davidson 0408 910 337

Licensed Sales Agent / Branch Manager - Collie |
mitch.davidson@ljhsouthwest.com.au

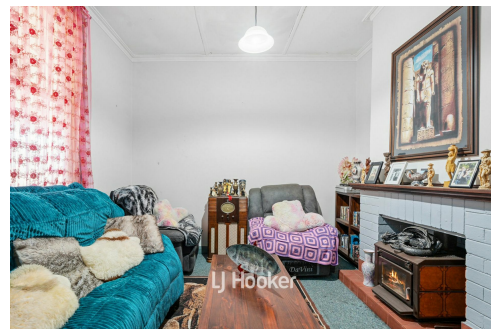
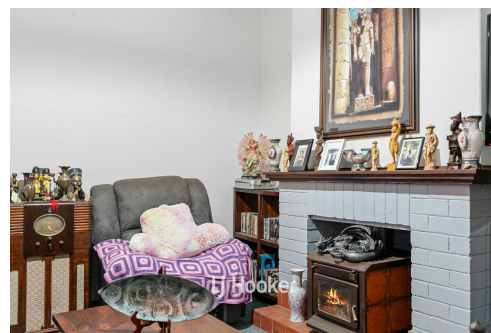
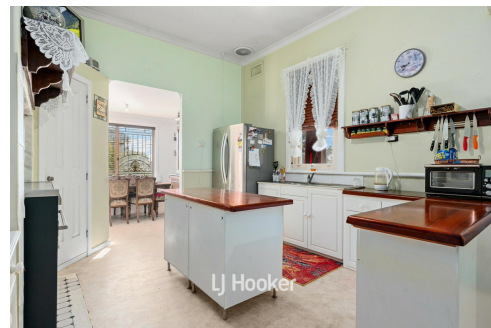
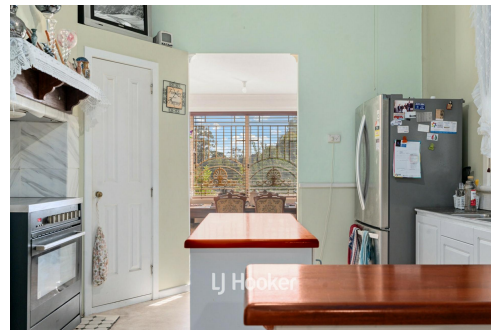
Emily Chappell 0447 340 344

Buyers Representative for Mitch Davidson | emily.chappell@ljhsouthwest.com.au

LJ Hooker Property South West WA (08) 9791 6880

130 Victoria Street, BUNBURY WA 6230

southwestwa.ljhooker.com.au | bunbury@ljhsouthwest.com.au



**LJ Hooker Property South West WA
(08) 9791 6880**

Disclaimer: All information contained therein is gathered from relevant third parties sources. We cannot guarantee or give any warranty about the information provided. Interested parties must rely solely on their own enquiries.



MITCH DAVIDSON
0408 910 337



2 MOORE STREET, COLLIE



TOTAL: 272 M2

THIS FLOOR PLAN HAS BEEN PREPARED BY EVENTUALLY CREATIVE. WHILE ALL MEASUREMENTS ARE CONSIDERED RELIABLE, THEY ARE NOT GUARANTEED AND SHOULD BE INDEPENDENTLY VERIFIED. THIS FLOOR PLAN IS COPYRIGHT PROTECTED AND CANNOT BE REPRODUCED, MODIFIED, OR USED WITHOUT THE PERMISSION OF EVENTUALLY CREATIVE.

