

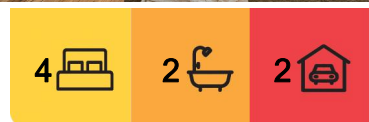


Collaroy Plateau, 5 Randall Court

Elevated, Spacious and Stylish: A Coastal Family Haven

Elevated with sweeping leafy district views and filtered ocean glimpses, this spacious four-bedroom home spans multiple levels, embracing contemporary coastal themes throughout. Experience a balance of style and practicality with multiple areas to work, relax or entertain. The sunlit, north-facing, child-friendly level yard, complete with an alfresco deck, creates a welcoming space perfect for both play and leisure. Positioned within a close-knit community, it's moments to village shops, cafes, popular schools, golf courses, tennis court, cinema, walking trails, surf beaches and express city buses.

- *Elevated four-bedroom home with district views and ocean glimpses
- *Spanning multiple levels with space to work, relax, or entertain
- *North-facing level yard with seamless flow to a lush alfresco deck
- *A balance of style and practicality with contemporary coastal themes
- *Multiple living areas with polished timber floorboards throughout
- *Gourmet kitchen with stone bench and premium quality appliances



For Sale
SOLD \$3,200,000

View
ljhooker.com.au/1AG3G5W

Contact
Jake McDonall
0402 740 085
jmcdonall@ljhnewport.com.au

Gordon Spring
0418 210 219
gspring@ljhnewport.com.au



Disclaimer: All information contained therein is gathered from relevant third parties sources. We cannot guarantee or give any warranty about the information provided. Interested parties must rely solely on their own enquiries.

LJ Hooker Newport
(02) 9979 1111

- *Four spacious bedrooms, built-ins, fans, and white plantation shutters
- *Master suite with an intimate balcony, peek of the ocean, and ensuite
- *Immaculate bathrooms, heated towel rails, luxe bath, and separate WC
- *Home office with study nook featuring charming open timber shelving
- *Series of glass sliding doors seamlessly unfold to the outdoor areas
- *Reverse cycle and split system air-con, surround sound, gas bayonet
- *Tesla powerwall battery with 13 kW solar system
- *Set within a close-knit community feel and friendly neighbourhood
- *Single automatic lock-up garage, carport, and under house storage
- *Moments to village shops, cafes, schools, and express city buses

Disclaimer:

All information contained herewith, including but not limited to the general property description, price and the address, is provided to LJ Hooker Newport by third parties. We have obtained this information from sources we believe to be reliable; however, we cannot guarantee its accuracy. The information contained herewith should not be relied upon and you should make your own enquiries and seek advice in respect of this property or any property on this website.

More About this Property

Property ID	1AG3G5W
Property Type	House
Land Area	588 m ²

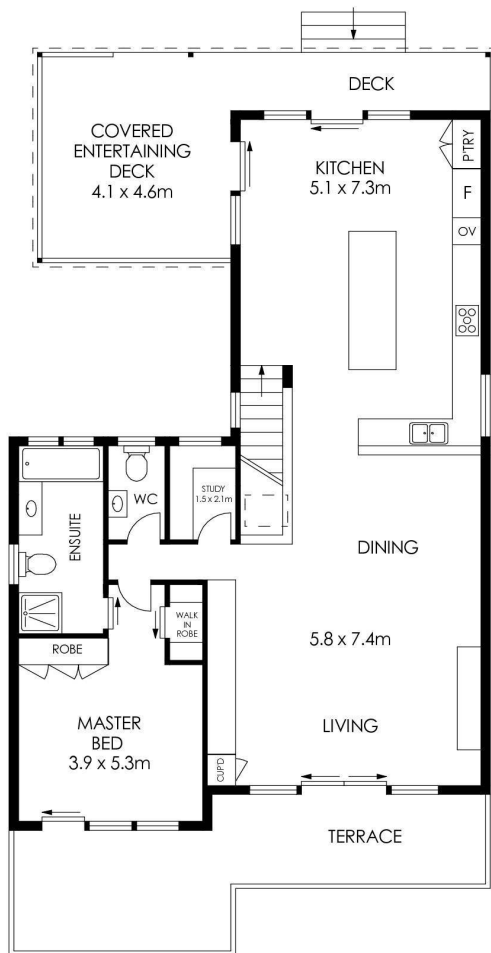
Jake McDonall 0402 740 085
 Sales Executive | jmcdonall@ljhnewport.com.au
Gordon Spring 0418 210 219
 Principal | gspring@ljhnewport.com.au

LJ Hooker Newport (02) 9979 1111
 303 Barrenjoey Road, NEWPORT NSW 2106
newport.ljhooker.com.au | newport@ljhnewport.com.au

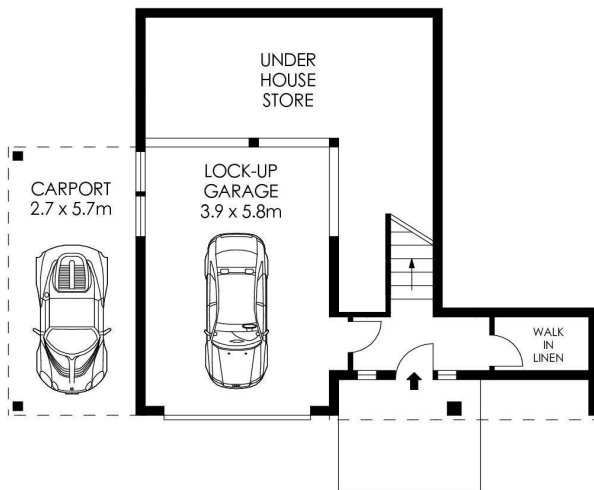


Disclaimer: All information contained therein is gathered from relevant third parties sources. We cannot guarantee or give any warranty about the information provided. Interested parties must rely solely on their own enquiries.

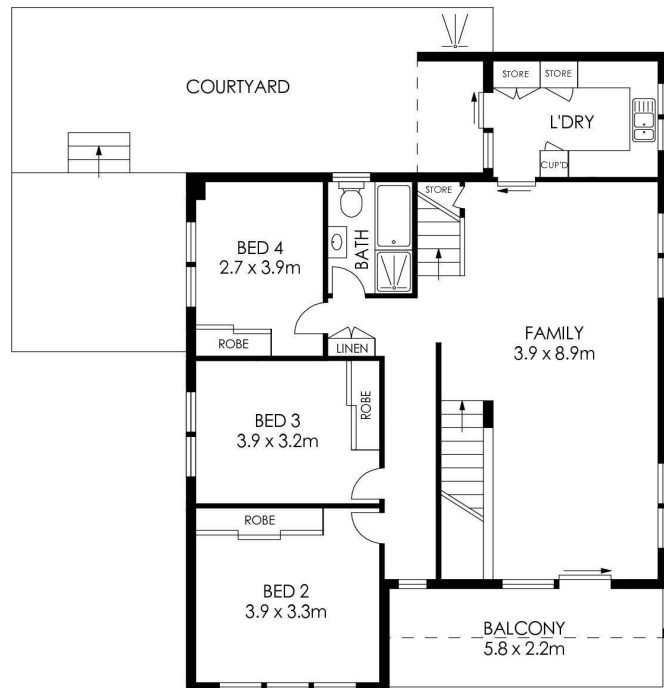
LJ Hooker Newport
(02) 9979 1111



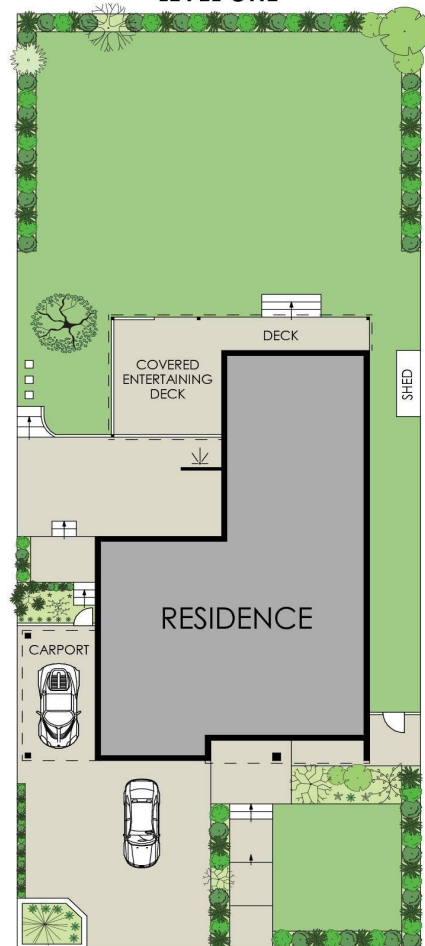
TOP FLOOR



ENTRY LEVEL



LEVEL ONE



SITE PLAN
(NOT TO SCALE)

APPROX. INTERNAL AREA = 276 m²
LAND SIZE = 588 m²

PLANS SHOWN ONLY INDICATIVE OF LAYOUT. DIMENSIONS ARE APPROXIMATE.

5 Randall Court, Collaroy Plateau

LJ Hooker

LJ Hooker

LJ Hooker Newport
(02) 9979 1111

Disclaimer: All information contained therein is gathered from relevant third parties sources. We cannot guarantee or give any warranty about the information provided. Interested parties must rely solely on their own enquiries.