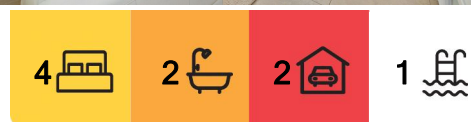


## Collaroy Plateau, 19 Acacia Street

Luxury Family Haven | Ocean + District Views | North Facing Parcel

Perfectly positioned commanding a desirable north facing corner parcel, this lovingly held home is only 12 years young and presents impeccably, offering incredible appeal for the growing family. Situated in one of Collaroy Plateau's most desirable and tightly held pockets and showcasing district and ocean views from Narrabeen Beach and beyond. This exclusive residence has been thoughtfully designed over two levels offering multiple living zones, expansive alfresco entertaining with brand new BBQ and Gozney Pizza Oven, a resort style heated pool, landscaped gardens and level lawn.

Refined yet relaxed, the home offers a coastal charm infused with contemporary sophistication, combining stunning high ceilings with open and airy free flow interiors amplifying the abundance of natural light that filters throughout the home. The upper level is the perfect family sanctuary featuring a generous rumpus perfect for a kids/parent retreat and spacious bedrooms with almost all boasting district and ocean views stretching up the



**For Sale**  
Sold

**View**  
[ljhooker.com.au/2VXJF6K](http://ljhooker.com.au/2VXJF6K)

**Contact**  
**Marco Cimino**  
0424 333 523  
[mcimino@ljhmv.com.au](mailto:mcimino@ljhmv.com.au)

**Ryan Petrie**  
0403 988 123  
[rpetrie@ljhmv.com.au](mailto:rpetrie@ljhmv.com.au)



**Disclaimer:** All information contained therein is gathered from relevant third parties sources. We cannot guarantee or give any warranty about the information provided. Interested parties must rely solely on their own enquiries.

**LJ Hooker Mona Vale**  
(02) 9979 8000

north coast.

A unique offering and an opportunity to secure a slice of the sought after beaches lifestyle, this incredible family haven is the ultimate 'turn key' opportunity!

- \* Coveted corner parcel is gently elevated with a sunny north aspect offering stunning views up the coastline from the upper level
- \* Entry level offers expansive proportions and an open concept that flows seamlessly. Featuring a stunning open tread timber staircase, high ceilings and mindful use of glass to complement the sunlight that enters the home
- \* Multiple living/entertaining zones including separate formal living. Appointed with a stunning gas fire place, the living room seamlessly integrates with the dining, kitchen and additional family room, opening effortlessly to the expansive alfresco, backyard and pool
- \* Anchored in the heart of the home, the kitchen offers a wonderful space for the family to convene and has full view of the pool and yard. Featuring a large waterfall island bench in Caesarstone, an array of near new Smeg appliances including, oven, steam oven, convection oven and induction cooking
- \* Walk in butlers pantry offering plenty of cupboard space, wine fridge and versatility when entertaining
- \* Perfect for the avid entertainer, the deep alfresco offers room for all your family and friends with timeless travertine and beautiful Bali ceiling fans. Brand new BBQ, Gozney Pizza Oven and wet bar with beautiful stone feature
- \* Sparkling in ground swimming pool is heated and private with level wrap around lawn and mature gardens. A wonderful space for entertaining and equally perfect for family life, with all the comforts to be enjoyed year round
- \* Four bedrooms located on the upper level, all with built in robes. Three bedrooms enjoy views across the district and out to the ocean with stunning coastline vistas. Two open out to their own private balcony
- \* Master suite is spacious in size and affords a huge walk in robe and luxury ensuite featuring a free standing bath, double vanity and quality appointments
- \* Family bathroom ideally located on the bedroom level also with a separate bath and shower, mosaic tile feature and double vanity
- \* Pristine powder room on entry level to service guests and spacious laundry with convenient outdoor access and ample cupboard space
- \* Huge double lock up garage with room for storage, home gym or even a small workshop. Extra high ceiling provides scope for mezzanine level for additional storage and versatility
- \* Fully ducted and zoned air conditioning, vacuum system, Tesla EV charger and electric gate

The Collaroy Plateau community is a family focused neighbourhood that is peacefully tucked away yet only moments to everything you need. Nearby reputable public and private schools, cafes and local shops. Minutes drive to popular surf beaches, public transport including B-Line from Pittwater Road with direct access to the CBD. Within close proximity to Narrabeen Lake and nearby walking/bike tracks, parks and scenic trails.

**Disclaimer:**

All information contained herewith, including but not limited to the general property description, price and the address, is provided to LJ Hooker Mona Vale by third parties. We have obtained this information from sources we believe to be reliable; however, we cannot guarantee its accuracy. The information contained herewith should not be relied upon and you should make your own enquiries and seek advice in respect of this property



**LJ Hooker Mona Vale**  
**(02) 9979 8000**

**Disclaimer:** All information contained therein is gathered from relevant third parties sources. We cannot guarantee or give any warranty about the information provided. Interested parties must rely solely on their own enquiries.



or any property on this website.

## More About this Property

Property ID	2VXJF6K
Property Type	House
Land Area	684 m2
Including	Ducted Cooling Ducted Heating Pool Outdoor Entertaining Built-in-Robes Water Tank Liveability

**Marco Cimino 0424 333 523**

Licensed Real Estate Agent | [mcimino@ljhmv.com.au](mailto:mcimino@ljhmv.com.au)

**Ryan Petrie 0403 988 123**

Licensed Real Estate Agent | [rpetrie@ljhmv.com.au](mailto:rpetrie@ljhmv.com.au)

**LJ Hooker Mona Vale (02) 9979 8000**

3/18 Bungan Street, MONA VALE NSW 2103

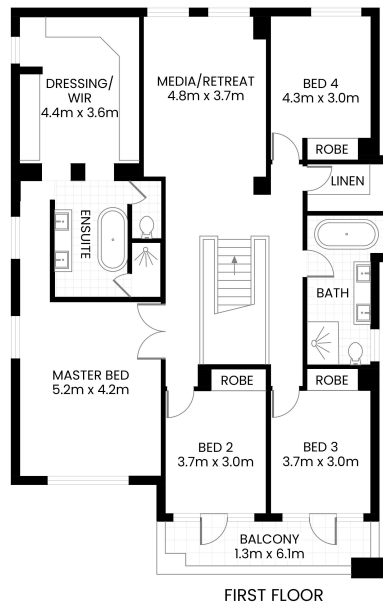
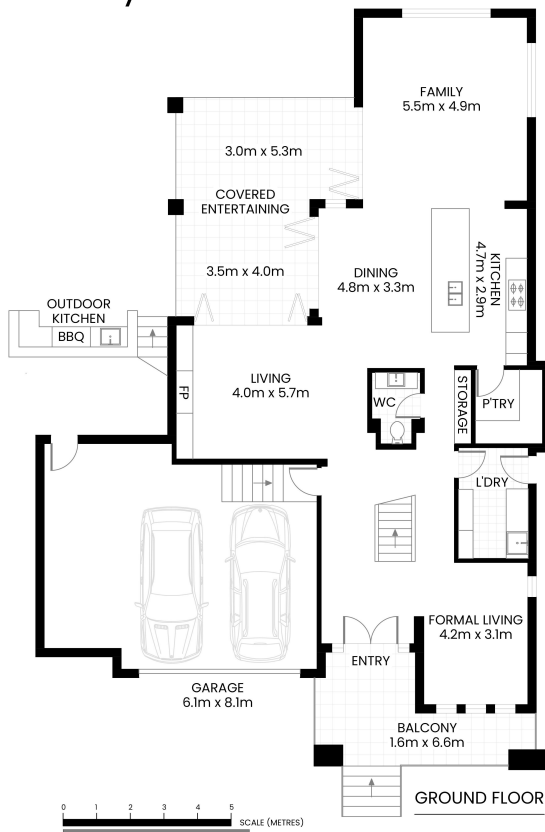
[monavale.ljhooker.com.au](mailto:monavale.ljhooker.com.au) | [monavale@ljhmv.com.au](mailto:monavale@ljhmv.com.au)



**Disclaimer:** All information contained therein is gathered from relevant third parties sources. We cannot guarantee or give any warranty about the information provided. Interested parties must rely solely on their own enquiries.

**LJ Hooker Mona Vale**  
**(02) 9979 8000**

19 Acacia Street  
Collaroy Plateau



INTERNAL AREA 335m<sup>2</sup> APPROX.  
INCL GARAGE  
EXTERNAL AREA 57m<sup>2</sup> APPROX.  
TOTAL AREA 392<sup>2</sup> APPROX.



The site plan and floor plan are not to scale; measurements are indicative and in meters. Bushes and trees are placed for illustration purposes. Plans should not be relied on. Interested parties should make and rely on their own enquire. All other information provided has been collected from reliable sources but cannot be guaranteed for accuracy.

**LJ Hooker**

**LJ Hooker**

**LJ Hooker Mona Vale**  
**(02) 9979 8000**

**Disclaimer:** All information contained therein is gathered from relevant third parties sources. We cannot guarantee or give any warranty about the information provided. Interested parties must rely solely on their own enquiries.