



18 Milford Street, Clyde

Modern Family Home (2 Living Areas) - Ready to Move In!


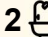
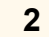
Nestled within the highly sought-after Riverfield Estate, this well-designed family residence offers a perfect blend of comfort, style and low-maintenance living.

The master bedroom features a walk-in robe and private ensuite, while the remaining bedrooms come with built-in robes and are serviced by a stylish main bathroom with a bathtub and a separate toilet. The kitchen is equipped with a stone benchtop, 900mm stainless steel appliances, a dedicated microwave space, and a dishwasher.

The home includes ducted heating and evaporative cooling for year-round comfort. A combination of carpet and timber laminate flooring adds warmth and style throughout.

The open plan living and dining area fills the home with natural light and creates a seamless flow into the fully enclosed low maintenance backyard, positioned perfectly to watch over the kids or pets play in or outdoors!

Completing this impressive package is a remote double garage with

4  2  2 

FOR SALE
\$695,000 - \$745,000

VIEW
Sat 25th Apr @ 3:00PM - 3:20PM

AGENTS
Rajesh Rednam
0420 222 141
rajesh.rednam@ljhcasey.com.au

AGENCY
LJ Hooker Cranbourne
(03) 5996 4777

All information contained therein is gathered from relevant third parties sources.
We cannot guarantee or give any warranty about the information provided.
Interested parties must rely solely on their own enquiries.

 **LJ Hooker**

internal access, ensuring convenience and security.

Key Features:

- Master bedroom with ensuite
- Three generous bedrooms with built in robes and a central bathroom
- Formal Lounge
- Family area
- Dining area
- Ducted heating
- Evaporative cooling
- 900mm kitchen appliances
- NBN Connection
- Low maintenance backyard

Additional highlights include:

- Remote-controlled double garage with internal access
- LED downlights
- Move-in ready with nothing left to do!

Perfectly located close to schools, parks, shops, and major amenities, this home represents an outstanding opportunity for first-home buyers, families, or savvy investors looking to secure a property in one of Clyde's most sought-after estates.

Investment Opportunity: This property offers investors a strong rental return of \$630 per week, making it an excellent addition to any growing property portfolio.

? A home that blends comfort, convenience and style - don't miss it!

For further information or to arrange an inspection, contact Rajesh Rednam on 0420 222 141.

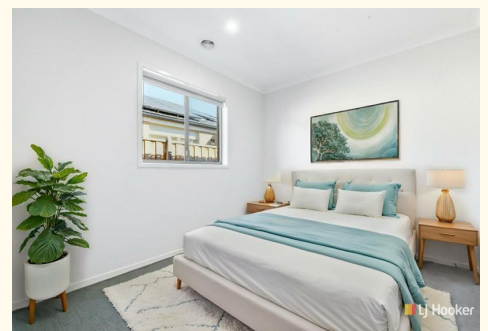
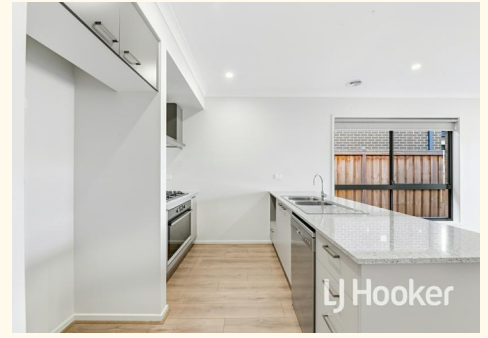
Disclaimer: All information contained herein is gathered from sources we consider to be reliable. However, we cannot guarantee or give any warranty about the information provided, and interested parties must solely rely on their own enquiries.

MORE DETAILS

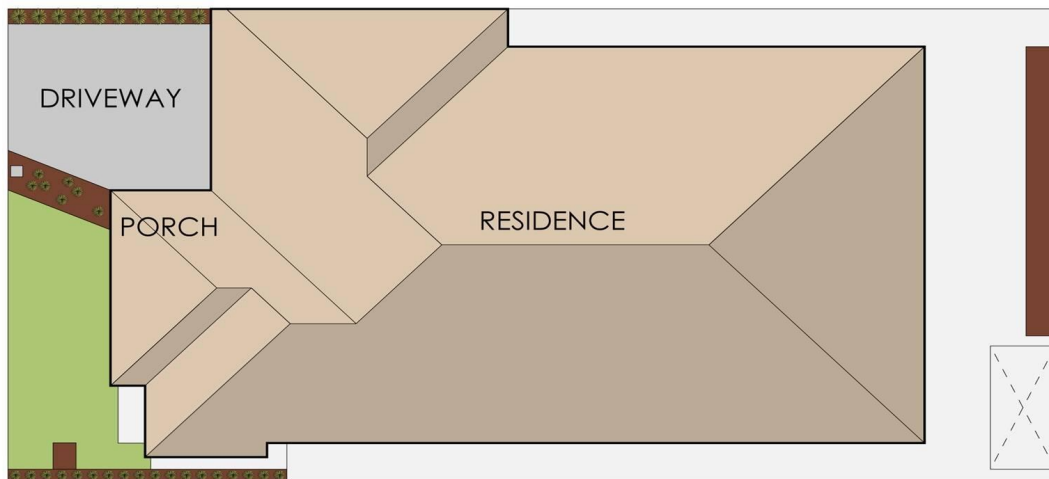
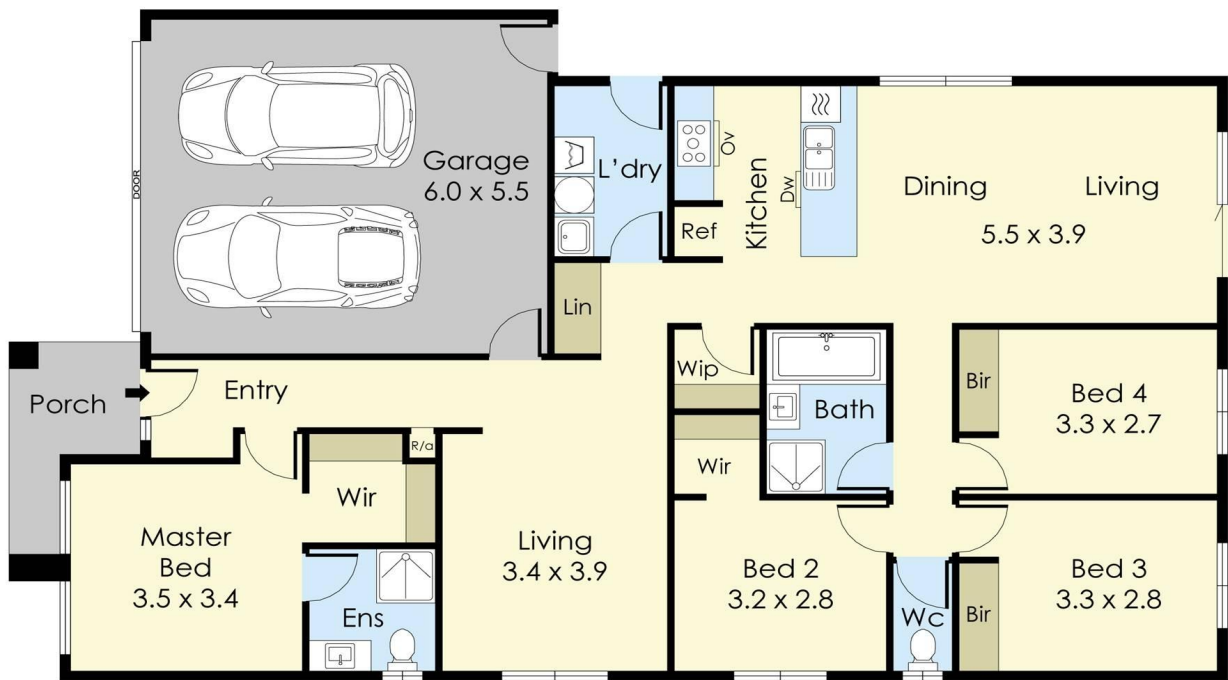
Property ID 1XGKFBS
Property Type House
House Size 142 m2
Land Area 313 m2
Including Ensuite
Ducted Heating
Evaporative Cooling
Dishwasher
Floorboards
Built-in-Robes
Solar Hot Water
Alfresco
Carpeted
Close to Schools
Close to Shops
Close to Transport

Rajesh Rednam 0420 222 141
Sales Agent | rajesh.rednam@ljhcasey.com.au

LJ Hooker Cranbourne (03) 5996 4777
119 High Street, CRANBOURNE VIC 3977
cranbourne.ljhooker.com.au | john.deo@ljhcasey.com.au



All information contained therein is gathered from relevant third parties sources.
We cannot guarantee or give any warranty about the information provided.
Interested parties must rely solely on their own enquiries.



18 Milford Street, Clyde

This floorplan is for illustration purposes only and no warranty is given to its accuracy. Purchasers are advised to carry out their own investigations.