



4/3 Beverley Road, Cloverdale

## Cracker in Cloverdale

CALLING ALL INVESTORS! Excellent tenant in place in this fully furnished apartment to July 2026 at \$600 per week.

Built off plan and purchased in 2018, this 2 x 2 x 1 apartment is in excellent condition and in a small development of only 12.

First floor with large back balcony in a secure development in the growth suburb of Cloverdale and less than a 10-minute drive to the airport. This is an ideal first investment or perfect to add to an already thriving portfolio.

Be quick, this won't last long.

What we love:

- 101sqm with 71sqm living space
- Secure undercover parking bay
- Aircon in living and both bedrooms
- Fully furnished and excellent tenant in place to July 2026
- Immaculately presented
- Great floorplan and solid size
- Excellent strata fees
- Pets allowed
- Small development with only 12 apartments

All information contained therein is gathered from relevant third parties sources. We cannot guarantee or give any warranty about the information provided. Interested parties must rely solely on their own enquiries.

2 🚗 2 🚗 1 🚗

**FOR SALE**  
From \$599,000

### AGENTS

Katie Lawley  
0448 682 624  
katie.lawley@ljhooker.com.au

### AGENCY

LJ Hooker City Residential  
(08) 9325 0700



Rates:  
Council - \$1,554.07 p.a.  
Water - \$1,182.36 p.a.  
Strata:  
Admin - \$660 p/qtr.  
Reserve - \$66 p/qtr.

## MORE DETAILS

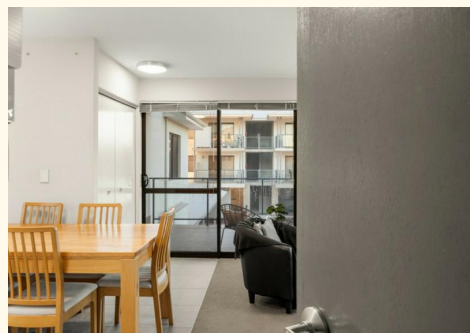
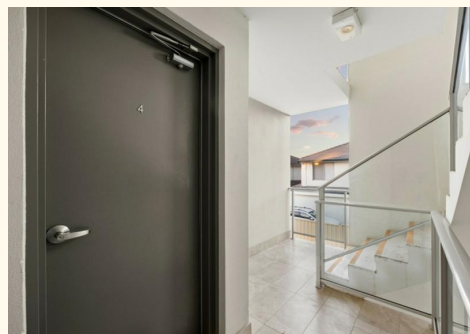
Property ID	3UMCFGJ
Property Type	Apartment
Including	Air Conditioning Intercom Balcony Built-in-Robes Secure Parking

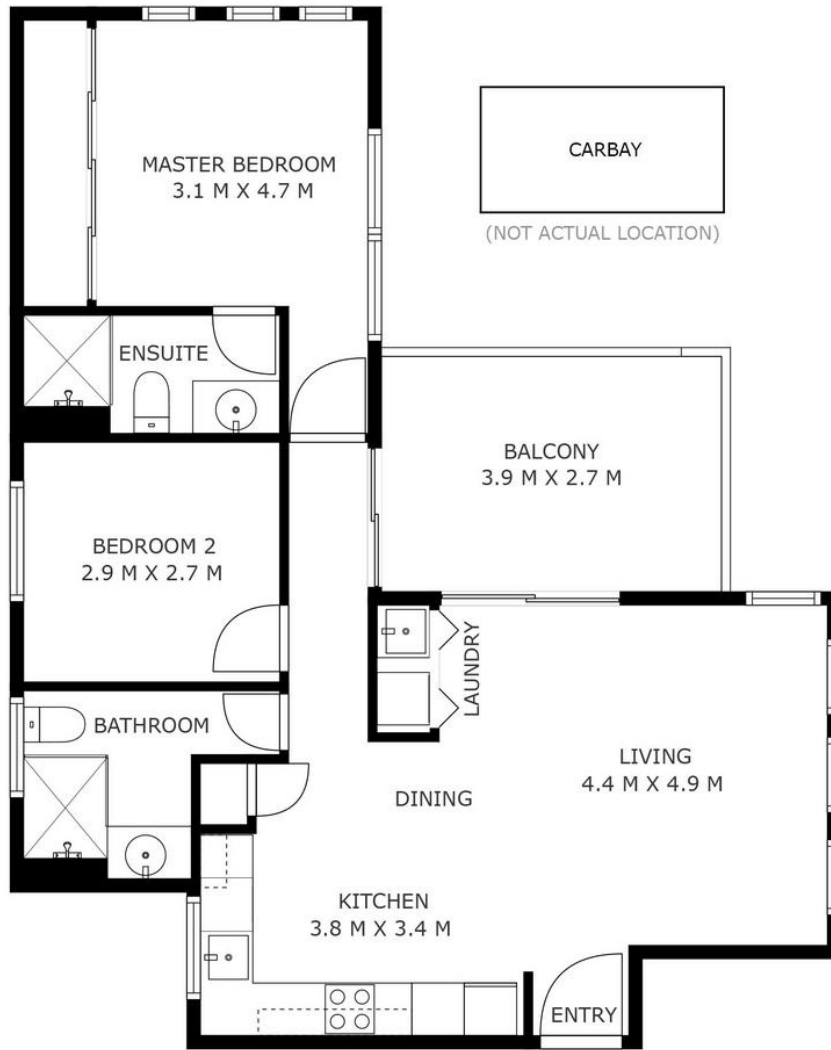
**Katie Lawley 0448 682 624**

Sales Executive | [katie.lawley@ljhooker.com.au](mailto:katie.lawley@ljhooker.com.au)

**LJ Hooker City Residential (08) 9325 0700**

Shop 30, 82 Royal Street, EAST PERTH WA 6004  
[cityresperth.ljhooker.com.au](http://cityresperth.ljhooker.com.au) | [hello@ljhpxp.com.au](mailto:hello@ljhpxp.com.au)





Approximate Areas  
Internal Living Total 72m<sup>2</sup>  
Balcony 10m<sup>2</sup>  
**4/3 Beverley Rd, Cloverdale**

This floor plan is for illustrative purposes only. While every effort has been made to provide an accurate representation, all measurements & other information are approximation only.

[www.propertyexperience.ljhooker.com.au](http://www.propertyexperience.ljhooker.com.au)  
[www.perthrealestatemedia.com](http://www.perthrealestatemedia.com)

