



Clifton Beach, 5 Thetford Close

Sellers Already Relocated! Your Dream Coastal Home Awaits

Experience the perfect fusion of coastal living and modern comfort in this stunning family home. Located just 400m from the pristine sands of Clifton Beach Esplanade, your idyllic seaside lifestyle is closer than ever.

Nestled in a tranquil cul-de-sac, this property offers a relaxed way of life in one of Far North Queensland's most sought-after locations.

Key Features:

- * Open-plan tiled living and dining areas designed for seamless indoor-outdoor flow.
- * Central kitchen with generous workspace, abundant storage, gas cooking, and a direct view of the pool.
- * Spacious main bedroom featuring a walk-through wardrobe and ensuite.
- * Three additional bedrooms, all with built-in wardrobes and air conditioning.
- * Separately fenced inground pool surrounded by a lush tropical oasis.

4 2 4 1

For Sale
Please Call

View
ljhooker.com.au/3WU9FMB

Contact
Kim Ryan
0410 500 342
kim.ryan@ljeh.com.au



LJ Hooker Cairns Edge Hill
(07) 4053 9999

Disclaimer: All information contained therein is gathered from relevant third parties sources. We cannot guarantee or give any warranty about the information provided. Interested parties must rely solely on their own enquiries.

* Lock-up shed, internal laundry, and multiple covered parking options for boats, caravans, or trailers.

* Generous 1,027sqm corner block with easy-care grounds that are both child and pet-friendly.

* Solar power system (10.56kW, 24 panels) for energy efficiency.

* Security screens and air conditioning throughout.

* Lock-up carport for 2 cars, plus an additional carport with space for 2 more vehicles and a boat, caravan, or trailer.

Designed to capture cool tropical breezes, the expansive wrap-around patio ensures effortless entertaining all year round.

Location Highlights:

* Close to local shops, cafes, and parklands.

* Just a short stroll to the beach for morning walks or sunset views.

This home is a rare gem, offering a tropical sanctuary that perfectly blends style, functionality, and an unbeatable location.

Don't miss this opportunity to make your dream coastal lifestyle a reality.

More About this Property

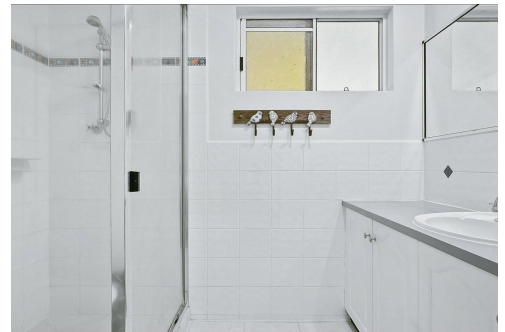
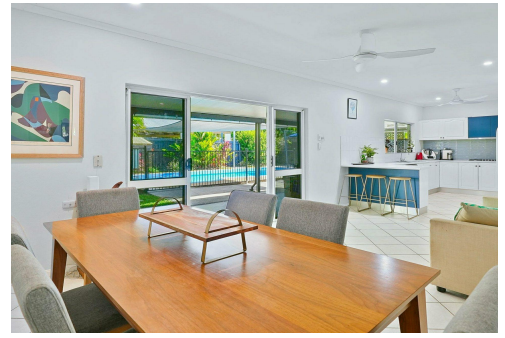
Property ID	3WU9FMB
Property Type	House
House Size	300 m2
Land Area	1027 m2
Including	Ensuite Air Conditioning Pool Dishwasher Outdoor Entertaining Built-in-Robes Solar Panels Solar ??KW

Kim Ryan 0410 500 342

Sales Consultant | kim.ryan@ljheh.com.au

LJ Hooker Cairns Edge Hill (07) 4053 9999

81 - 83 Woodward Street, EDGE HILL QLD 4870
cairnsedgehill.ljhooker.com.au | cairnsedgehill@ljheh.com.au



Disclaimer: All information contained therein is gathered from relevant third parties sources. We cannot guarantee or give any warranty about the information provided. Interested parties must rely solely on their own enquiries.

**LJ Hooker Cairns Edge Hill
(07) 4053 9999**



This floor plan including furniture, fixture measurements and dimensions are approximate and for illustrative purposes only. ©RealFocusCairns.com.au

5 Thetford Close, Clifton Beach