

11 Bentwing Street, Cliftleigh

MODERN FAMILY HAVEN IN CLIFTLEIGH

Welcome to 11 Bentwing Street, a near-new Coral Homes build where comfort meets convenience. With modern finishes, a clever floor plan, and a sunny north-east facing backyard, this home offers a relaxed lifestyle in one of the Hunter's fastest-growing communities. From weekend barbecues to cosy nights in, every detail has been designed for easy family living.

Set in the increasingly popular suburb of Cliftleigh, you're just minutes from local schools, Kurri Kurri's town centre, Green Hills Shopping Centre, and Maitland's CBD. The Hunter Expressway is only minutes from your driveway, putting Newcastle, the Hunter Valley, and Lake Macquarie all within easy reach.

Key Features:

- Four generous bedrooms - mirrored built-ins to two, walk-in wardrobes to the master and second bedroom
- Master suite with ensuite and ceiling fan
- Two spacious living areas, both with ceiling fans
- Separate dining area for family meals and entertaining
- Contemporary kitchen with ample storage, large pantry, gas cooking, and dishwasher

4 🏠 2 🚿 2 🚗

FOR SALE
\$822,000

AGENTS

Michael Velkovski
0414 332 000
michael.velkovski@ljhooker.com.au

Rebecca Velkovski
0410 524 437
rebecca.velkovski@ljhooker.com.au

AGENCY

LJ Hooker Lake Macquarie
(02) 4915 3800

All information contained therein is gathered from relevant third parties sources.
We cannot guarantee or give any warranty about the information provided.
Interested parties must rely solely on their own enquiries.



- Main bathroom with separate bath and WC
- Double garage with internal access
- Ducted air conditioning for year-round comfort
- Double lockable side gate - perfect for trailers, boats, or extra vehicles
- Currently leased for \$700pw

This stylish, low-maintenance home is ready for you to move in and start making memories.
Agent declares interest.

The information contained herein has been provided by people we believe to be reliable, however all interested parties must rely on their own enquiries.

MORE DETAILS

Property ID	ZBQF7Q
Property Type	House
Land Area	479.9 m2

Michael Velkovski 0414 332 000

Sales Executive | michael.velkovski@ljhooker.com.au

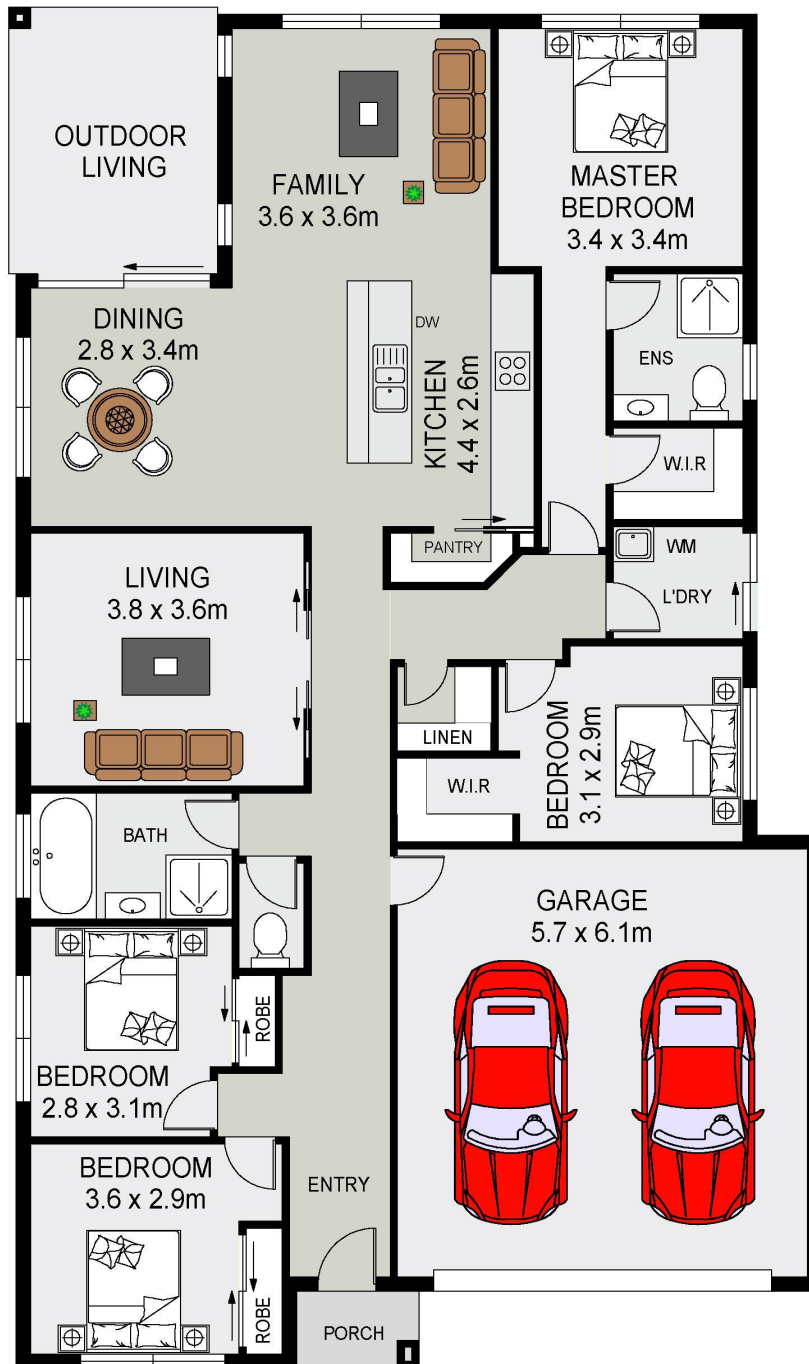
Rebecca Velkovski 0410 524 437

Sales Executive | rebecca.velkovski@ljhooker.com.au

LJ Hooker Lake Macquarie (02) 4915 3800

Shop 12, 240-260 Hillsborough Road, WARNERS BAY NSW 2282
lakemacquarie.ljhooker.com.au | warnersbay@ljhooker.com.au





11 Bentwing Street
Cliffeigh



Total Internal Floor Area: 150 sqm

Scale in metres. Indicative only. Dimensions are approximate. All information contained herein is gathered from sources we believe to be reliable. However we cannot guarantee its accuracy and interested persons should rely on their own enquiries



All information contained therein is gathered from relevant third parties sources.
We cannot guarantee or give any warranty about the information provided.
Interested parties must rely solely on their own enquiries.

