

Clittleigh, 6 Shalistan Street

Massive Returns Here!!

Positioned in a thriving, family friendly suburb, just minutes from the Hunter Expressway, and all the essentials on your investment checklist being met, this modern and stylish dual-key property boasts all of today's essentials, each with its own lockable car space, and well-appointed backyard!

LJ Hooker Maitland are pleased to offer for your consideration, an investment delivering a combined \$1010 per week - with growth potential at lease end. Currently there are with two fantastic tenants in place, leaving you peace of mind knowing your property is in the best of hands!

Tenancy in mind, this property is conveniently located just a short distance from schools, shops, and transport options, this investment offers incredible appeal.

Proudly marketed by LJ Hooker Maitland, please call exclusive agent Ben Cotton 0434 638



Disclaimer: All information contained therein is gathered from relevant third parties sources. We cannot guarantee or give any warranty about the information provided. Interested parties must rely solely on their own enquiries.

5	2	2
---	---	---

For Sale
\$896,000

View
ljhooker.com.au/1DKDF6H

Contact
Todd Fisher
0438 592 920
tfisher.maitland@ljhooker.com.au

Ben Cotton
0434 638 822
bcotton.maitland@ljhooker.com.au

LJ Hooker Maitland
(02) 4933 5511

822 - 7 days for all inspections & further information.

All information contained herein is gathered from sources we deem to be reliable. However, we cannot guarantee its accuracy and interested persons should rely on their own enquiries.

More About this Property

Property ID	1DKDF6H
Property Type	BlockOfUnits
Land Area	450 m ²
Including	Ensuite Air Conditioning Toilets (2) Built-in-Robes Close to Schools Close to Shops Close to Transport Openable Windows

Todd Fisher 0438 592 920

Principal/Licensee in Charge | tfisher.maitland@ljhooker.com.au

Ben Cotton 0434 638 822

Licensed Real Estate Agent & Auctioneer | bcotton.maitland@ljhooker.com.au

LJ Hooker Maitland (02) 4933 5511

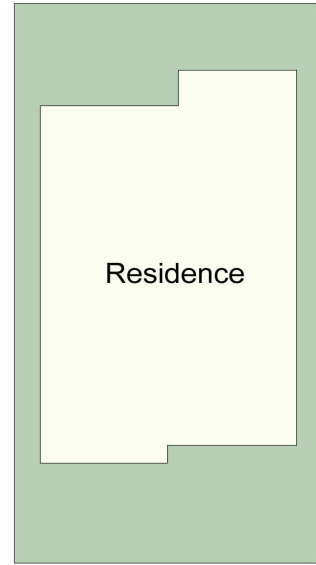
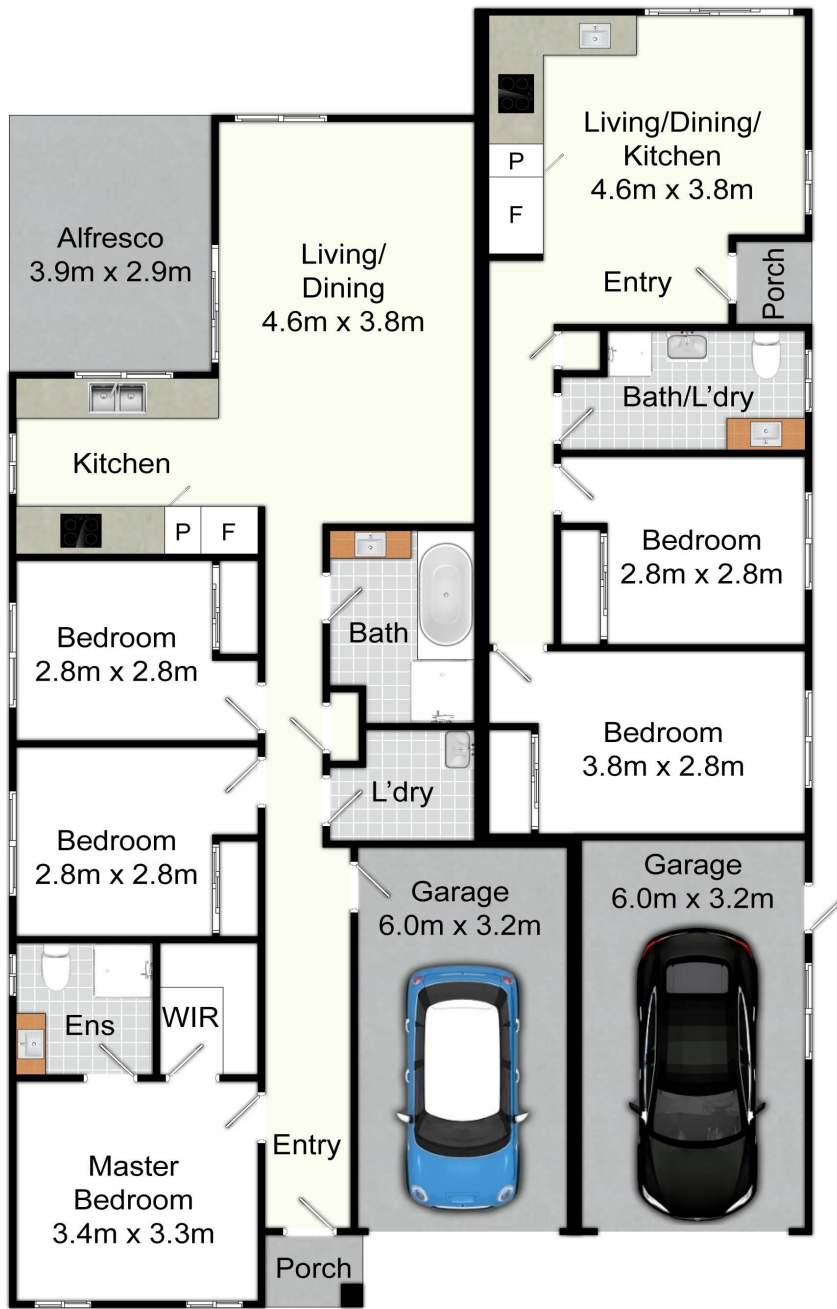
24 Ken Tubman Drive, MAITLAND NSW 2320

maitland.ljhooker.com.au | maitland@ljhooker.com.au



LJ Hooker Maitland
(02) 4933 5511

Disclaimer: All information contained therein is gathered from relevant third parties sources. We cannot guarantee or give any warranty about the information provided. Interested parties must rely solely on their own enquiries.



Site Plan
Not To Scale

6 Shalistan St, Clifftleigh

All information contained herein is gathered from sources we deem reliable. However, we cannot guarantee its accuracy and act as a messenger only in passing on the details. Interested parties should rely on their own inquiries and the contract for sale. The floor plans are artist's impressions only. The site plan is not to scale.



LJ Hooker Maitland
(02) 4933 5511

Disclaimer: All information contained therein is gathered from relevant third parties sources. We cannot guarantee or give any warranty about the information provided. Interested parties must rely solely on their own enquiries.