



Boundary markings are approximate

LJ Hooker



LJ Hooker



LJ Hooker



LJ Hooker

Cleveland, 50/20 Masthead Drive

BEAUTIFUL APARTMENT WITH STUNNING WATERVIEW

Located at the heart of Raby Bay Harbour, this 2 bedroom, 2 bathroom unit in Anchorage complex building is sure to take your breath away with wide canal view, front & back balconies... It is indeed bright, spacious. Living here feels like holiday all year around. Sit back with a glass of champagne or a cup of coffee while you soak up the beautiful harbour views.

This contemporary apartment has a beautiful flow, thanks to the open-plan living and dining space. Vinyl flooring runs through the area and connects to the stylish and high-quality kitchen. Here, you can unleash your inner chef with stone bench tops, gloss white cabinetry and built-in appliances. This home has ducted air-condition for year-round comfort, and sliding doors lead to the balcony revealing the stunning view across the Harbour. The boats are so close you can almost reach out and touch them, but you can settle for relaxing on the spacious balcony, with room for a dining set, barbecue and more.

 LJ Hooker

Disclaimer: All information contained therein is gathered from relevant third parties sources. We cannot guarantee or give any warranty about the information provided. Interested parties must rely solely on their own enquiries.



For Sale
Please Call

View
ljhooker.com.au/BRPBF2S

Contact
Ming Body
0418 297 978
mbody@ljhpropertycentre.com.au

LJ Hooker Property Centre
(07) 3286 2500

There is also a retractable awning to enjoy the Queensland sunshine or pull-down for privacy and shade.

The two air-conditioned bedrooms are good sizes, with plush carpeting and lots of natural light. The master has a beautifully-appointed ensuite and walk-through robe, while the other bedroom has the built-in wardrobe and can be used as an office.

The family bathroom with its separate powder room has a full-length bath, and a separate shower, all in fantastic condition, and the Euro laundry maximise space on the floorplan. With a leisurely stroll to a range of restaurants, supermarkets and shops, The Anchorage is the perfect home to ditch the car and enjoy the true Raby Bay lifestyle. Don't miss out on this rare opportunity to secure a stunning waterfront apartment. Contact Ming today and make The Anchorage your new address.

At A Glance:

- * 2 bedroom Harbour-front apartment
- * 2 car parking with a lock up storage
- * Wide canal view
- * Ducted air-con system
- * Crimsafe security Doors
- * Remote Control blinds in living room
- * Insinkerate for the kitchen.
- * Stunning front balcony overlooking Raby Bay Harbour, back balcony facing Masthead Drive.
- * Awing on the balcony
- * All bedrooms with fans
- * Master with walk-through robe and ensuite
- * Walk to a range of restaurants, shops and transport links

Year built: 1999

Body corporate Approx. \$1600/quarter

Rates Approx. \$770/quarter with water usage included

DISCLAIMER: In preparing this information, we have used our best endeavours to ensure that the information contained therein is true and accurate but accept no responsibility and disclaim all liability in respect of any errors, inaccuracies or misstatements contained herein. Prospective purchasers should make their own inquiries to verify the information contained herein. All information contained by Ming Properties is provided as a convenience to clients



LJ Hooker Property Centre
(07) 3286 2500

Disclaimer: All information contained therein is gathered from relevant third parties sources. We cannot guarantee or give any warranty about the information provided. Interested parties must rely solely on their own enquiries.

More About this Property

Property ID	BRPBF2S
Property Type	Apartment
Land Area	143 m ²
Including	Ensuite Air Conditioning Balcony

Ming Body 0418 297 978

Independent Contractor - Ming Enterprises Pty Ltd |
mbody@ljhpropertycentre.com.au

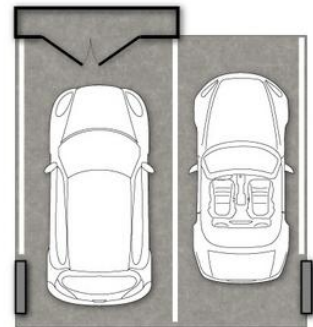
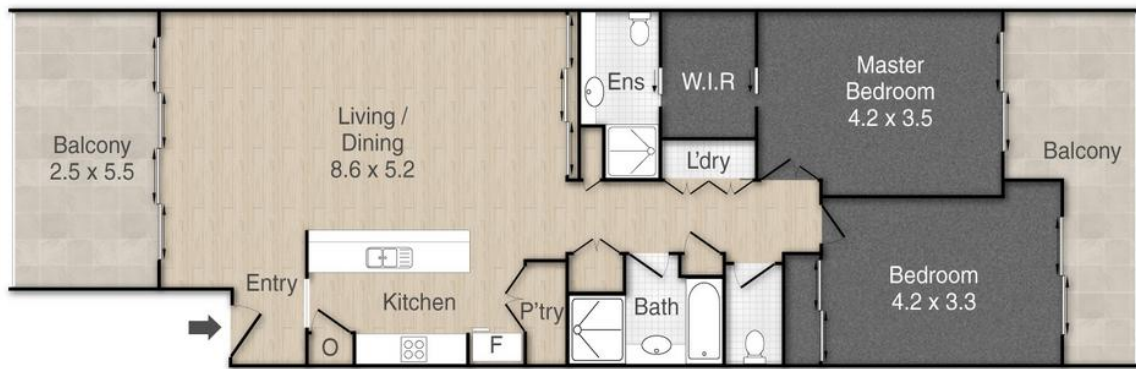
LJ Hooker Property Centre (07) 3286 2500

152-164 Shore Street West, Raby Bay, Brisbane QLD 4163
propertycentre.ljhooker.com.au | hello@ljhpc.com.au



LJ Hooker Property Centre
(07) 3286 2500

Disclaimer: All information contained therein is gathered from relevant third parties sources.
We cannot guarantee or give any warranty about the information provided. Interested parties must rely solely on their own enquiries.



50/20 Masthead Drive,
 Cleveland

2 2 2

PLEASE NOTE THIS PLAN IS FOR MARKETING PURPOSES AND IS TO BE USED AS A GUIDE ONLY. ALL MARKINGS, MEASUREMENTS, AREAS, AND LAYOUT ARE INDICATIVE ONLY AND INTERESTED PARTIES SHOULD MAKE THEIR OWN ENQUIRIES BEFORE MAKING ANY DECISIONS. FLOOR COVERINGS INDICATED ARE FOR ILLUSTRATIVE PURPOSES ONLY AND MAY NOT ACCURATELY PORTRAY ACTUAL FLOOR COVERINGS OF THE PROPERTY. NO GUARANTEES ARE MADE REGARDING THE INFORMATION CONTAINED IN THIS PLAN AND NO LIABILITY FOR ANY INACCURACIES IS ACCEPTED.