

2 Littabella Road, Clarkson

****Near New 2025 Build —Stylish, Spacious & Ready to Enjoy****


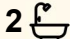
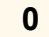
There's something different about walking into a home that was only built last year. Everything is fresh, sharp, and exactly as it should be. This near new 2025-built residence in Clarkson delivers that feeling, combined with a layout that actually works for modern living.

Set on a 400m² block with a generous 175m² of internal space, this home strikes the balance most buyers are chasing. There's enough room to live comfortably, without the burden of high maintenance.

At the heart of the home, the open-plan kitchen, living and dining area is designed to bring people together. Clean lines, quality finishes, and a practical flow make it equally suited to quiet nights in or entertaining friends and family. The kitchen is finished with stone benchtops and modern appliances, giving it both presence and functionality.

Beyond the main living zone, the home opens up into multiple purpose-built spaces. A dedicated theatre room creates the perfect escape for movie nights or weekend sport, while a separate study provides a quiet, focused environment for working from home.

The four bedrooms are well-proportioned, with the master suite

4  2  0 

FOR SALE

Please Call

AGENTS

Ian Knight
0413 447 016
ian.knight@ljhooker.com.au

Tommy Simpson
0411 584 120
tommy.simpson@ljhooker.com.au

AGENCY

LJ Hooker Joondalup
(08) 9300 2100

All information contained therein is gathered from relevant third parties sources.
We cannot guarantee or give any warranty about the information provided.
Interested parties must rely solely on their own enquiries.

 **LJ Hooker**

offering a private retreat complete with its own ensuite. The second bathroom is finished to the same modern standard, ensuring consistency throughout the home.

Every element has been designed with ease in mind; from the double garage with internal access, to the low-maintenance outdoor space that gives you freedom without sacrificing lifestyle.

Located in the growing suburb of Clarkson, you're within easy reach of schools, shops, transport links and the coastline, making this a smart choice whether you're buying to live in or invest.

This is a home that removes the usual friction: no building delays, no unexpected costs, no compromises. Just a clean, well-executed property ready for its first owner to move in and enjoy.

MORE DETAILS

Property ID	KWMHRD
Property Type	House
House Size	175 m2
Land Area	400 m2

Ian Knight 0413 447 016

Residential Sales Specialist | ian.knight@ljhooker.com.au

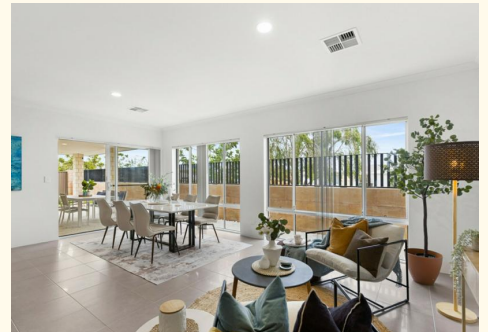
Tommy Simpson 0411 584 120

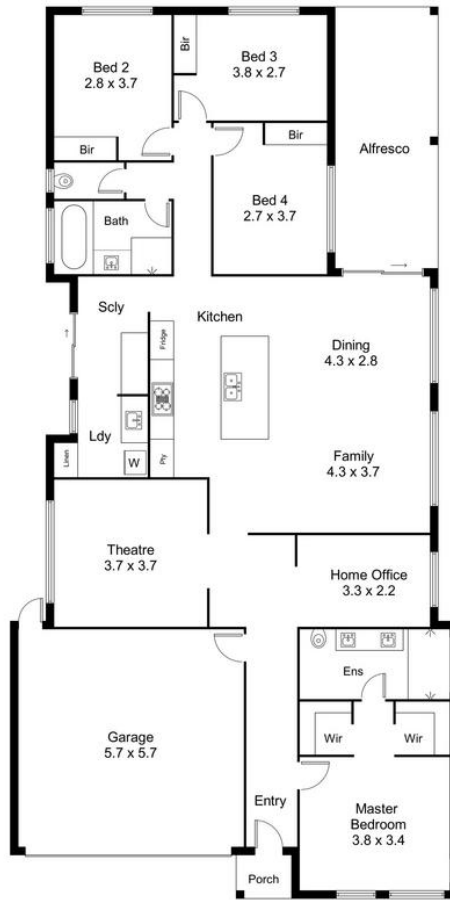
Buyers Agent | tommy.simpson@ljhooker.com.au

LJ Hooker Joondalup (08) 9300 2100

4/25 Delage Street, JOONDALUP WA 6027

joondalup.ljhooker.com.au | admin.joondalup@ljhooker.com.au





2 Littabella Road, Clarkson

For information and guidance purpose only / measurements shown are approximate