



SOLD



Clarkson, 12 Longleaf Drive

Spacious & Stylish Family Home in Prime Somerley Estate Location!

Welcome to 12 Longleaf Drive, Clarkson, a stunning 4-bedroom, 2-bathroom residence nestled in the highly sought-after Somerley Estate. This beautifully designed home offers the perfect blend of space, comfort, and modern upgrades, making it ideal for growing families, professionals, or savvy investors.

Key Features You'll Love:

- Generous Living Spaces —Enjoy an open-plan kitchen, family, and meals area, a separate sunken front lounge, and a dedicated theatre room for movie nights.
- Luxurious Master Retreat —A massive 5m x 5m master suite with a built-in robe and a fully renovated ensuite for ultimate comfort.
- Gourmet Kitchen —Recently renovated with stone benchtops, quality appliances, and ample storage.
- Modern Bathrooms & Laundry —Both upgraded with stone benchtops, adding a touch of



For Sale
\$769k+

View
ljhooker.com.au/JMPHRD

Contact
Ian Knight
0413 447 016
ian.knight@ljhooker.com.au
Marco Viljoen
0468747725
marco.viljoen@ljhooker.com.au



LJ Hooker Joondalup
(08) 9300 2100

Disclaimer: All information contained therein is gathered from relevant third parties sources. We cannot guarantee or give any warranty about the information provided. Interested parties must rely solely on their own enquiries.

elegance.

- Flexible Spaces —Dedicated office for working from home and an activity area for kids or hobbies.
- Ducted air conditioning throughout, new carpets, and impressive 32c ceilings in all living areas and the master bedroom.
- Energy Efficient & Healthy Living —Equipped with solar panels and a whole-home water filtration system.
- Beautiful Outdoor Space —Established gardens with fruit trees and reticulation make for a lush and low-maintenance yard.

Prime Location Perks:

- Walking Distance to Clarkson Train Station for an easy commute.
- Close to public & private schools, perfect for families.
- Moments from Ocean Keys Shopping Centre for all your retail and dining needs.
- Surrounded by multiple parks, including the brand-new Riverlinks "All Abilities" Playground.
- Just 2.5km to Quinns Beach and 12 minutes to Joondalup CBD.
- Easy access to the freeway, only 25 minutes to Perth.

This incredible home offers unmatched convenience, space, and modern living in one of Clarkson's most desirable neighborhoods. Don't miss out-contact us today to arrange a viewing!

More About this Property

Property ID	JMPHRD
Property Type	House
House Size	183 m2
Land Area	484 m2
Including	Ensuite Toilets (2)

Ian Knight 0413 447 016

Residential Sales Specialist | ian.knight@ljhooker.com.au

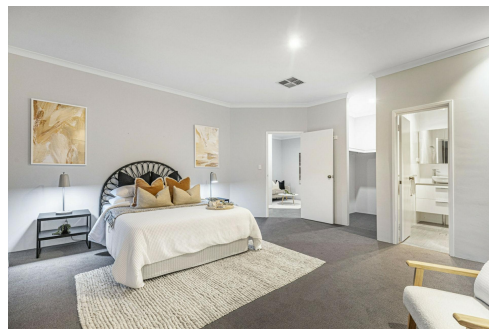
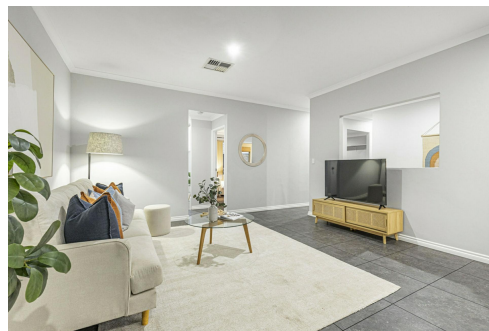
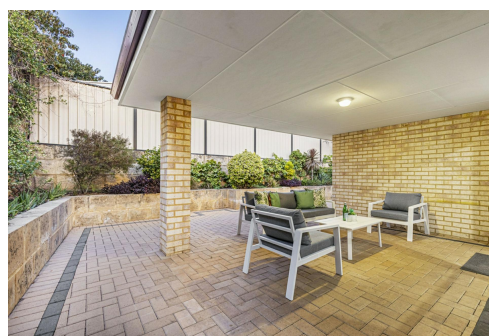
Marco Viljoen 0468747725

Sales Consultant | marco.viljoen@ljhooker.com.au

LJ Hooker Joondalup (08) 9300 2100

4/25 Delage Street, JOONDALUP WA 6027

joondalup.ljhooker.com.au | admin.joondalup@ljhooker.com.au



**LJ Hooker Joondalup
(08) 9300 2100**

Disclaimer: All information contained therein is gathered from relevant third parties sources. We cannot guarantee or give any warranty about the information provided. Interested parties must rely solely on their own enquiries.



FLOORPLAN



SITEPLAN



12 Longleaf Drive, Clarkson

For information and guidance purpose only / measurements shown are approximate



LJ Hooker Joondalup
(08) 9300 2100

Disclaimer: All information contained therein is gathered from relevant third parties sources. We cannot guarantee or give any warranty about the information provided. Interested parties must rely solely on their own enquiries.