



## Clarks Beach, 18 Gertrude Cole Road

### Sunlight, Space & Serenity

Sunlight, Space & Serenity

Meaning: A light-filled home on a prime corner site, designed for peaceful living and spacious family comfort.

#### SPACE

Bathed in sunlight and set on a prized corner section, this five-bedroom home offers an exceptional layout and a bright spacious feel throughout. With only two neighbours and generous setbacks, the property enjoys both privacy and light, creating a calm and uplifting living environment. Designed with large families and multi-generational living in mind, the home offers thoughtful separation of space and multiple living zones for enhanced functionality.

Upstairs, you'll find two generous master bedrooms-each with their own ensuite and walk-in wardrobe-alongside a light-filled sitting area, ideal as a teenage retreat, reading nook or



**Disclaimer:** All information contained therein is gathered from relevant third parties sources. We cannot guarantee or give any warranty about the information provided. Interested parties must rely solely on their own enquiries.

5

4

4

**For Sale**

Price by Negotiation

**View**

Sat 7th Jun @ 12:00PM - 2:00PM

**Contact**

**Rocky Zhang**

021 683 383

rocky@ljhsouth.co.nz

**LJ Hooker Southern Partners**  
09 298 4000

private lounge. Two additional bedrooms are also located on this level, sharing a well-appointed family bathroom.

Downstairs, the home reveals a third master suite with its own ensuite and walk-in wardrobe-perfect for guests, extended family, or live-in support. The expansive open-plan kitchen, dining and living area flows effortlessly to outdoor entertaining spaces, while a separate lounge offers a peaceful zone for relaxing or hosting. Every element has been considered to support a lifestyle of comfort, connection, and ease.

A double internal access garage completes the package, providing secure parking, ample storage, and convenient everyday entry into the home.

## FEATURES

- House Area : 269m<sup>2</sup> (approx.)
- Land Area : 395m<sup>2</sup> (approx.)
- Sleep easy knowing your home is equipped with a modern alarm system
- 5 spacious bedrooms - including 3 master suites with ensuites and walk-in wardrobes
- 3 ensuites, 1 full family bathroom upstairs, plus a downstairs powder room
- Modern open-plan living with seamless flow between kitchen, dining, and lounge
- Contemporary kitchen with island bench, quality appliances, and generous storage
- Separate lounge - perfect as a media room or formal retreat
- Upstairs sitting room with built-in kitchenette - ideal for extended family or teens
- Indoor-outdoor flow to a private patio and garden area
- Double internal-access garage with integrated laundry

## LOCATION

Positioned in the peaceful coastal community of Clarks Beach, this home is just minutes from the shoreline, local golf course, boat ramp, scenic walkways, and charming cafés. Zoned for Waiau Pa School, families will enjoy quality education in a close-knit rural setting-all while remaining under 20 minutes from motorway access for easy commuting.

## OPPORTUNITY

With its modern comforts, flexible layout, and standout corner site, 18 Gertrude Cole Road is a rare find for families seeking space, sun, and serenity by the coast. Whether you are upsizing, accommodating extended family or simply after a change of pace-this home ticks all the boxes. Contact Rocky on 021 683 383 today to arrange your private viewing or attend the next open home.



**LJ Hooker Southern Partners**  
**09 298 4000**

**Disclaimer:** All information contained therein is gathered from relevant third parties sources. We cannot guarantee or give any warranty about the information provided. Interested parties must rely solely on their own enquiries.

## More About this Property

Property ID	CXJ19
Property Type	House
House Size	269 m2
Land Area	395 m2
Including	Toilets (4)

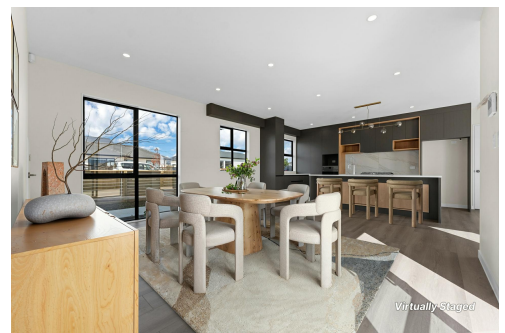
**Rocky Zhang 021 683 383**

Licensed Salesperson | [rocky@ljhsouth.co.nz](mailto:rocky@ljhsouth.co.nz)

**LJ Hooker Southern Partners 09 298 4000**

319 Great South Road, PAPA KURA NZ

[southernpartners.ljhooker.co.nz](mailto:southernpartners.ljhooker.co.nz) | [enquiries@ljhsouth.co.nz](mailto:enquiries@ljhsouth.co.nz)



**Disclaimer:** All information contained therein is gathered from relevant third parties sources.  
We cannot guarantee or give any warranty about the information provided. Interested parties must rely solely on their own enquiries.

**LJ Hooker Southern Partners**  
**09 298 4000**