



52 Hudson Parade, Clareville

## M House - Award Winning Private Waterfront Retreat

Honoured with a Master Builders Award and shortlisted for multiple Australian and international design awards, "M House" is a recently built Clareville Beach residence designed as an extension of its leafy shoreline setting. Situated on over 1,300sqm of near-level land, a lush green canopy cascades from the rooftop and rises from the gardens below, softening the concrete form and blurring the boundaries between indoors and out.

A unique blend of architectural excellence, prestige and privacy, this is one of Pittwater's most prized waterfront homes.

- Designed by internationally acclaimed RAMA Architects and meticulously constructed by Hampton Constructions
- Basalte Home KNX automation system controlling DALI lighting, HVAC and floor heating including full remote access
- Expansive full height Vitrocsa sliding doors throughout the home
- Abundant natural light creates bright, airy living spaces
- Seamless indoor-outdoor flow ideal for entertaining
- Escea gas fireplace in sunken lounge
- Daikin 5-zone ducted air-conditioning and hydronic underfloor heating
- Near level land with direct access to a sandy beach - perfect for

5 3 8

**FOR SALE**  
Contact Agent

**VIEW**  
By Appointment

**AGENTS**  
Olivia Broomhead  
0418 463 615  
olivia.broomhead@ljhavalon.com.au

**AGENCY**  
LJ Hooker Avalon Beach  
(02) 9973 2999

All information contained therein is gathered from relevant third parties sources.  
We cannot guarantee or give any warranty about the information provided.  
Interested parties must rely solely on their own enquiries.

**LJ Hooker**



- kids and families
- 12 rooftop solar panels for energy efficiency and sustainability
- Separate adult and children's living areas connected via a suspended tallowwood bridge over a double-height atrium
- Landscaping concept by Paul Alexander includes plans for pool and cabana
- Bluetooth-operated, zoned garden irrigation with full remote access
- Remote-controlled gates and garage door, with keypad or intercom access
- High-res 4-camera CCTV system with full remote access
- 3-car garage with integrated lighting and ample storage
- Natural tallowwood and sandstone throughout-
- Hard-wired internet access and data points in all rooms
- Landscaping Excellence award winning gardens by Reflective Gardens/Sprout Studios
- Luxury from top-to-bottom in an unrivalled waterfront setting

**Disclaimer:**

All information provided, including but not limited to the property description, price, and address, has been supplied to LJ Hooker Avalon Beach by third parties. While we believe this information to be reliable, we do not guarantee its accuracy. Interested parties should conduct their own due diligence and seek independent advice regarding any property or information on this website.

**MORE DETAILS**

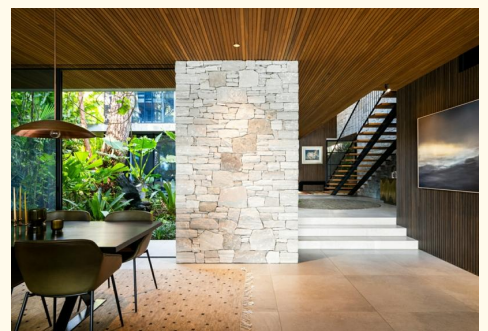
Property ID	WS2F58
Property Type	House
Land Area	1322 m2
Including	Ensuite
	Study
	Air Conditioning
	Toilets (5)
	Intercom
	Built-in-Robes
	Beach Front
	Close to Schools
	Close to Shops
	Creative
	Heating
	Liveability
	Openable Windows

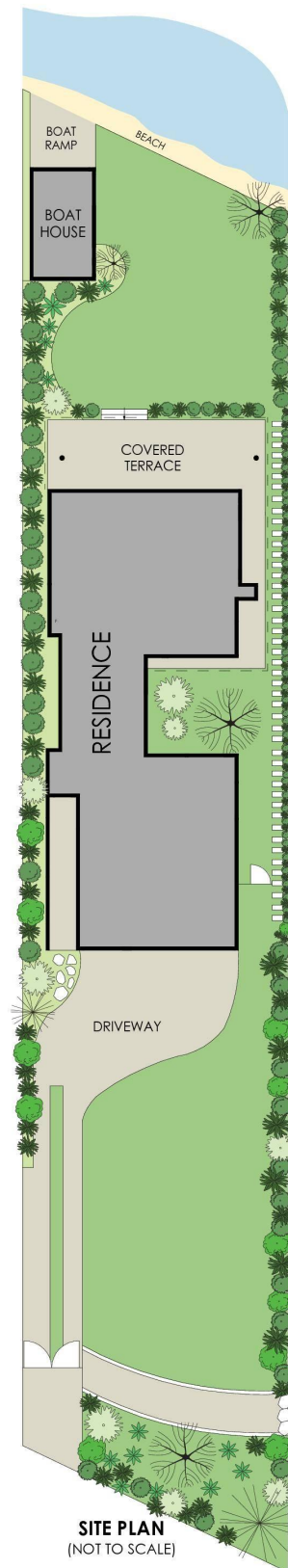
**Olivia Broomhead 0418 463 615**

Licensed Real Estate Agent | [olivia.broomhead@ljhavalon.com.au](mailto:olivia.broomhead@ljhavalon.com.au)

**LJ Hooker Avalon Beach (02) 9973 2999**

64 Old Barrenjoey Road, AVALON BEACH NSW 2107  
[avalonbeach.ljhooker.com.au](http://avalonbeach.ljhooker.com.au) | [avalonbeach@ljhooker.com.au](mailto:avalonbeach@ljhooker.com.au)





APPROX. INTERNAL AREA = 404 m<sup>2</sup>  
 APPROX. EXTERNAL AREA = 150 m<sup>2</sup>  
 TOTAL = 554 m<sup>2</sup>  
 LAND SIZE = 1322 m<sup>2</sup>

PLANS SHOWN ONLY INDICATIVE OF LAYOUT. DIMENSIONS ARE APPROXIMATE.

**52 Hudson Parade, Clareville**

**LJ Hooker**

All information contained therein is gathered from relevant third parties sources.  
 We cannot guarantee or give any warranty about the information provided.  
 Interested parties must rely solely on their own enquiries.

**LJ Hooker**