






252 Hudson Parade, Clareville

3  1  0 

Most Affordable Waterfront Cottage on Pittwater

If you're convinced that waterfront living is entirely out of reach, think again. Boasting 1,015sqm right on Pittwater's shoreline, this stylish cottage is undoubtedly one of the more affordable waterfront properties to hit the market in years. In an area dotted with trophy homes, the highly functional layout is combined with crisply finished interiors, contemporary kitchen and bathroom, plus vast alfresco decks in a stunning waterfront setting.

Perfect as a holiday getaway, there's also an approved DA in place to create an impressive four bedroom residence with pool, boathouse, double carport, granny flat and inclinator should you decide to create something new; you'll be saving months (or years) in the arduous development process and can start the new build immediately.

Features include:

- 1,015sqm parcel right on the waterfront
- Cool, coastal vibe with lime-washed floors and sandstone fireplace
- Interiors spill out to a series of both sheltered and alfresco decks
- Open plan living zone joined by a contemporary, full-sized kitchen
- Casual meals bar, dedicated home office, pristine modern bathroom

FOR SALE
SOLD!

AGENTS

Jake McDonall
0402 740 085
jmcdonall@ljhnewport.com.au

Jake McDonall
0402 740 085
jmcdonall@ljhnewport.com.au

AGENCY

LJ Hooker Newport
(02) 9979 1111

All information contained therein is gathered from relevant third parties sources.
We cannot guarantee or give any warranty about the information provided.
Interested parties must rely solely on their own enquiries.

 **LJ Hooker**

- Bright, charming bedrooms plus two fitted with built-in wardrobes
- DA approval for a four bedroom dream home with pool, boathouse, granny flat, double carport & inclinator
- Start build immediately and cut years off the development process
- Floating dock for jet ski or tender boat
- Large floating pontoon on swing mooring closest to the house
- Previous Airbnb income of \$76,000 per year
- In the secret bay of Refuge Cove, Pittwater

Disclaimer:

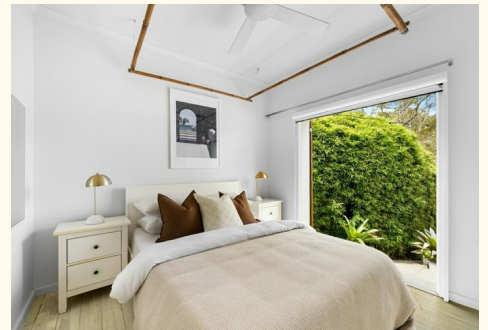
All information contained herewith, including but not limited to the general property description, price and the address, is provided to LJ Hooker Newport by third parties. We have obtained this information from sources we believe to be reliable; however, we cannot guarantee its accuracy. The information contained herewith should not be relied upon and you should make your own enquiries and seek advice in respect of this property or any property on this website.

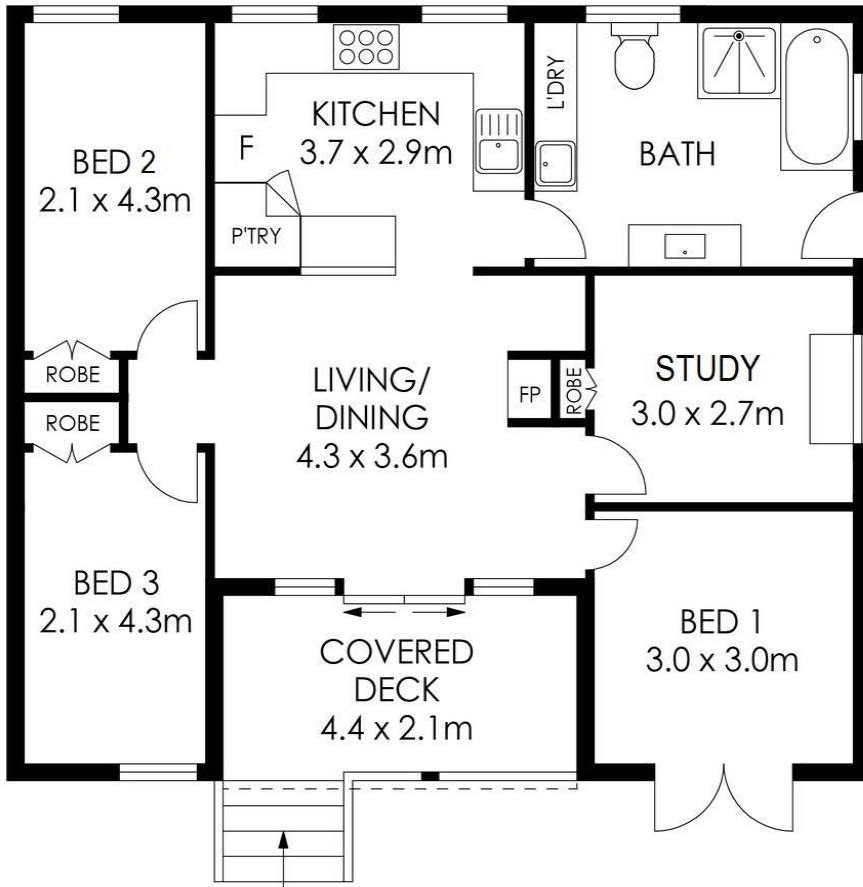
MORE DETAILS

Property ID 1AMBG5W
 Property Type House
 Land Area 1015 m2

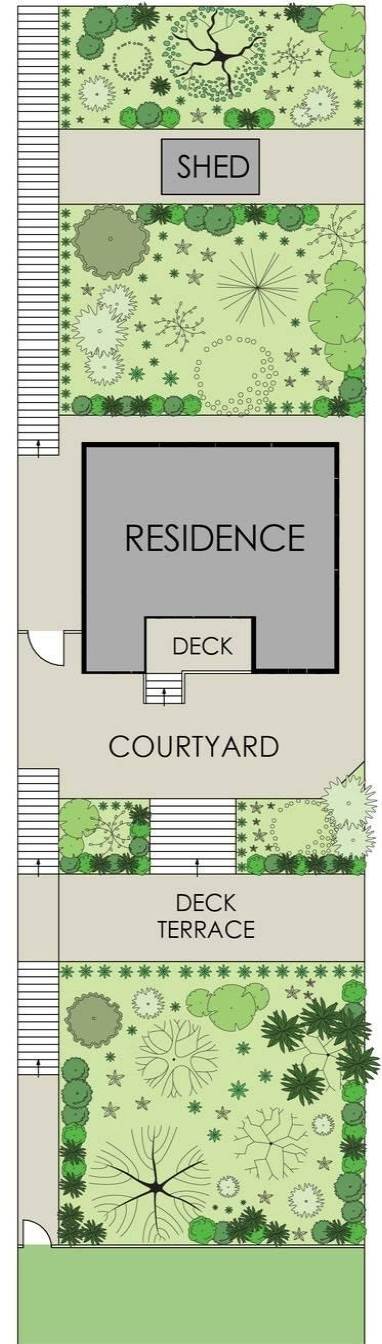
Jake McDonall 0402 740 085
 Sales Executive | jmcdonall@ljhnewport.com.au
Jake McDonall 0402 740 085
 Sales Executive | jmcdonall@ljhnewport.com.au

LJ Hooker Newport (02) 9979 1111
 303 Barrenjoey Road, NEWPORT NSW 2106
newport.ljhooker.com.au | newport@ljhnewport.com.au





GROUND LEVEL



SITE PLAN
(NOT TO SCALE)

LAND SIZE = 1015sqm

PLANS SHOWN ONLY INDICATIVE OF LAYOUT. DIMENSIONS ARE APPROXIMATE.



252 Hudson Parade, Clareville



All information contained therein is gathered from relevant third parties sources. We cannot guarantee or give any warranty about the information provided. Interested parties must rely solely on their own enquiries.

