

157 Hudson Parade, Clareville

An Architectural Showpiece with Iconic North Views to Lion Island

This is undoubtedly one of Hudson Parade's premier residences; a masterpiece of architectural innovation and expert craftsmanship, it lays claim to extraordinary north vistas straight up to Lion Island. Sitting comfortably and discreetly above Pittwater, it's a superb fusion of form and functionality, drawing inspiration from its majestic setting; the design incorporates organic textures with bold, clean architecture to create a singular, contemporary vision.

The design speaks volumes about relaxed sophistication; it unfolds into beautifully zoned spaces for living and entertaining, while providing privacy for family and guests. It's a home designed for stress-free living across three levels, each serviced by an internal lift from the six-car garage. The fluidity of the layout is immediately evident with a sequence of living spaces, each illuminated by north light and views; they are visually connected yet separate. The double glazed doors slide back to merge the interiors with expansive terraces on each level, creating a perfectly protected environment fronting the iconic Pittwater backdrop.

The fully automated home has been meticulously curated down to the finest detail, from the intricate stonework to the palette of beautiful

5 🏠 3 🚗 6 🚗

FOR SALE
Contact Agent

VIEW
By Appointment

AGENTS
BJ Edwards
0420 304 140
bjedwards@ljhpb.com.au

AGENCY
LJ Hooker Palm Beach
(02) 9974 5999

All information contained therein is gathered from relevant third parties sources.
We cannot guarantee or give any warranty about the information provided.
Interested parties must rely solely on their own enquiries.

 **LJ Hooker**

materials. It boasts a deluxe marble-topped kitchen and butler's pantry, two Jetmaster fireplaces, three lavish ensuite bedrooms, magnificent native gardens and a stunning, glass-fronted plunge pool.

This is a truly remarkable residence, and certainly one of the finest on this exclusive stretch of Hudson Parade; the coming-to-market of this property represents a landmark opportunity in an unrivalled coastal setting.

- Architecturally designed by Keith Pike; traded only once since 2005
- Gun-barrel views to Lion Island, Palm Beach and the National Park
- Beautifully zoned for living and entertaining with family and guests
- Views from virtually every room + expansive terraces at each level
- Deluxe marble kitchen includes butler's pantry + Vintec wine fridge
- Glass-fronted plunge pool overlooks magnificent gardens & Pittwater
- Three lavish ensuite bedrooms feature custom joinery and terraces
- Sumptuous, top floor master retreat with fireplace, library and terrace
- Media room, utility room, guest w/c, two Jetmaster fireplaces
- Ducted climate control, 500 bottle wine storage, entryway koi-pond
- Well protected from southerlies, double-brick build clad in zinc
- Internal lift from the six-car garage services all three levels

MORE DETAILS

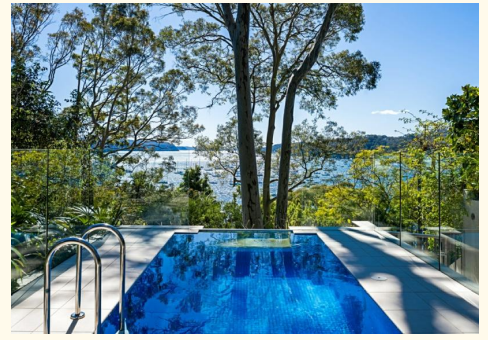
Property ID BU2F6Z
Property Type House

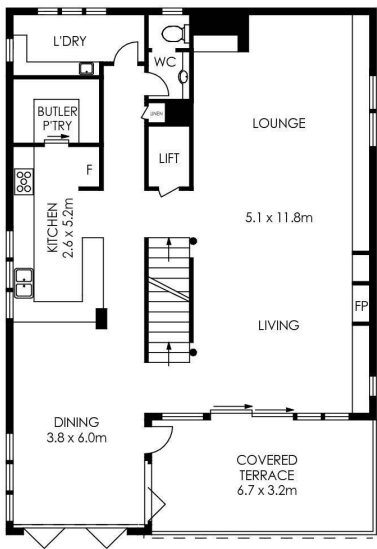
BJ Edwards 0420 304 140

Licensed Real Estate Agent | bjedwards@ljhpb.com.au

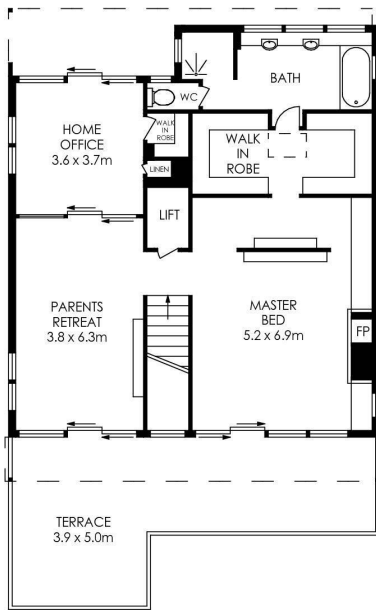
LJ Hooker Palm Beach (02) 9974 5999

1073 Barrenjoey Road, PALM BEACH NSW 2108
palmbeach.ljhooker.com.au | office@ljhpb.com.au

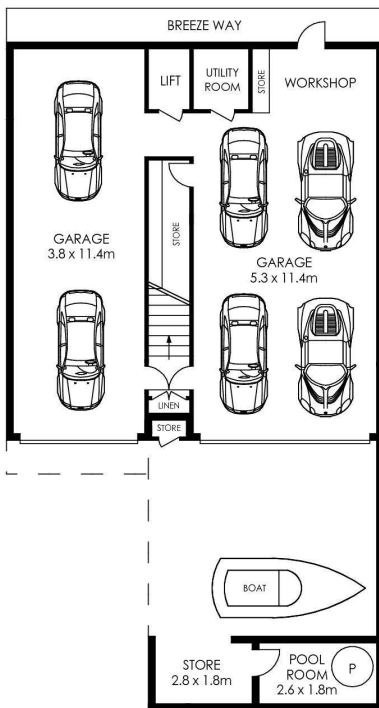




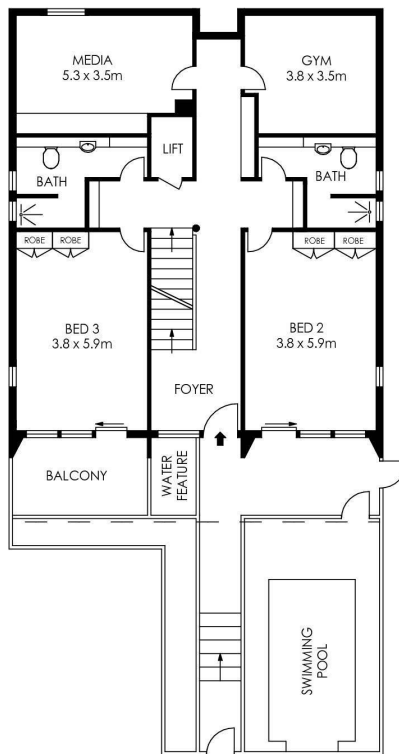
LEVEL TWO



LEVEL THREE



LOWER LEVEL



LEVEL ONE



SITE PLAN
(NOT TO SCALE)

APPROX. INTERNAL AREA = 494 m²
 APPROX. EXTERNAL AREA = 140 m²
 TOTAL = 634 m²
 LAND SIZE = 714.5 m²

PLANS SHOWN ONLY INDICATIVE OF LAYOUT. DIMENSIONS ARE APPROXIMATE.



157 Hudson Parade, Clareville



All information contained therein is gathered from relevant third parties sources. We cannot guarantee or give any warranty about the information provided. Interested parties must rely solely on their own enquiries.

