



Clareville, 10 Delecta Avenue

Beachfront Paradise, Alluring Interiors, Resort Style Entertaining

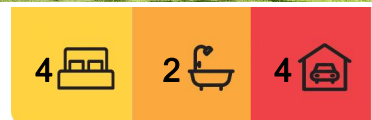
Nestled against the tranquil shores of Clareville Beach, framed by the picturesque backdrop of Pittwater, stands a remarkable residence embodying the epitome of luxury living. Meticulously crafted without compromise, this home boasts clean, minimalist architecture and a clever layout that seamlessly integrates the timeless interior with the spectacular outside environment, offering flexible spaces for maximum relaxation and entertainment.

Set on a generous and level block of 708 square meters, the expansive beach reserve frontage offers a unique and beautiful coastal lifestyle where lush level lawn merges with the Clareville Beach shoreline. At the heart of the property is a heated pool and spa, which serve as a private focal point within the sun-drenched resort-style garden.

Highlights of this exceptional residence include:



Disclaimer: All information contained therein is gathered from relevant third parties sources. We cannot guarantee or give any warranty about the information provided. Interested parties must rely solely on their own enquiries.



For Sale
\$12,000,000

View
ljhooker.com.au/BDJF6Z

Contact
Dennis Kennelly
0477 977 971
dennis.kennelly@ljhooker.com.au
Dennis Kennelly
0477 977 971
dennis.kennelly@ljhooker.com.au

LJ Hooker Palm Beach
(02) 9974 5999

- Thoughtfully designed interiors characterised by pure tones, natural materials and textures, creating a sense of harmony
- Bathed in natural light throughout the day, and taking advantage of coastal breezes, the residence offers captivating panoramic 180 degree views across Pittwater to Ku-ring-gai National Park and Lion Island
- Impeccably chosen finishes, including natural stone and timber, exude timeless luxury
- The sweeping living and dining area is anchored by an impressive Escea gas fireplace framed by a combination of natural stone and expertly crafted cabinetry concealing hi-tech entertainment equipment
- Full length, glass bi-fold doors, perfectly concertina, beckoning the natural beauty outside to radiate through the internal living spaces
- A bespoke chef's kitchen featuring a stone island, high-spec and integrated appliances, and a walk-in pantry, which includes two Leibherr wine fridges and underfloor cellar storage
- Two lower-level bedrooms with built-ins, alongside a flexible TV room/office/4th bedroom
- An upper-level parents' retreat complete with his-and-hers built-ins, a spacious ensuite, and private waterside balcony with spectacular views over Pittwater
- Designer bathrooms equipped with heated floors and towel rails, complemented by a laundry with ample cabinetry
- Smart home automation system (CONTROL 4), central heating and cooling, and a 9.2kW solar system
- An expansive entertainer's deck featuring a Tucker barbecue, alongside the heated pool, spa, and sun lounge deck
- Automatic double garage with a workshop and, loft storage, all with covered level access to the residence



More About this Property

| | |
|----------------------|--------------------|
| Property ID | BDJF6Z |
| Property Type | House |
| Land Area | 708 m ² |

Dennis Kennelly 0477 977 971

Licensed Real Estate Agent | Residential and Commercial |
dennis.kennelly@ljhooker.com.au

Dennis Kennelly 0477 977 971

Licensed Real Estate Agent | Residential and Commercial |
dennis.kennelly@ljhooker.com.au

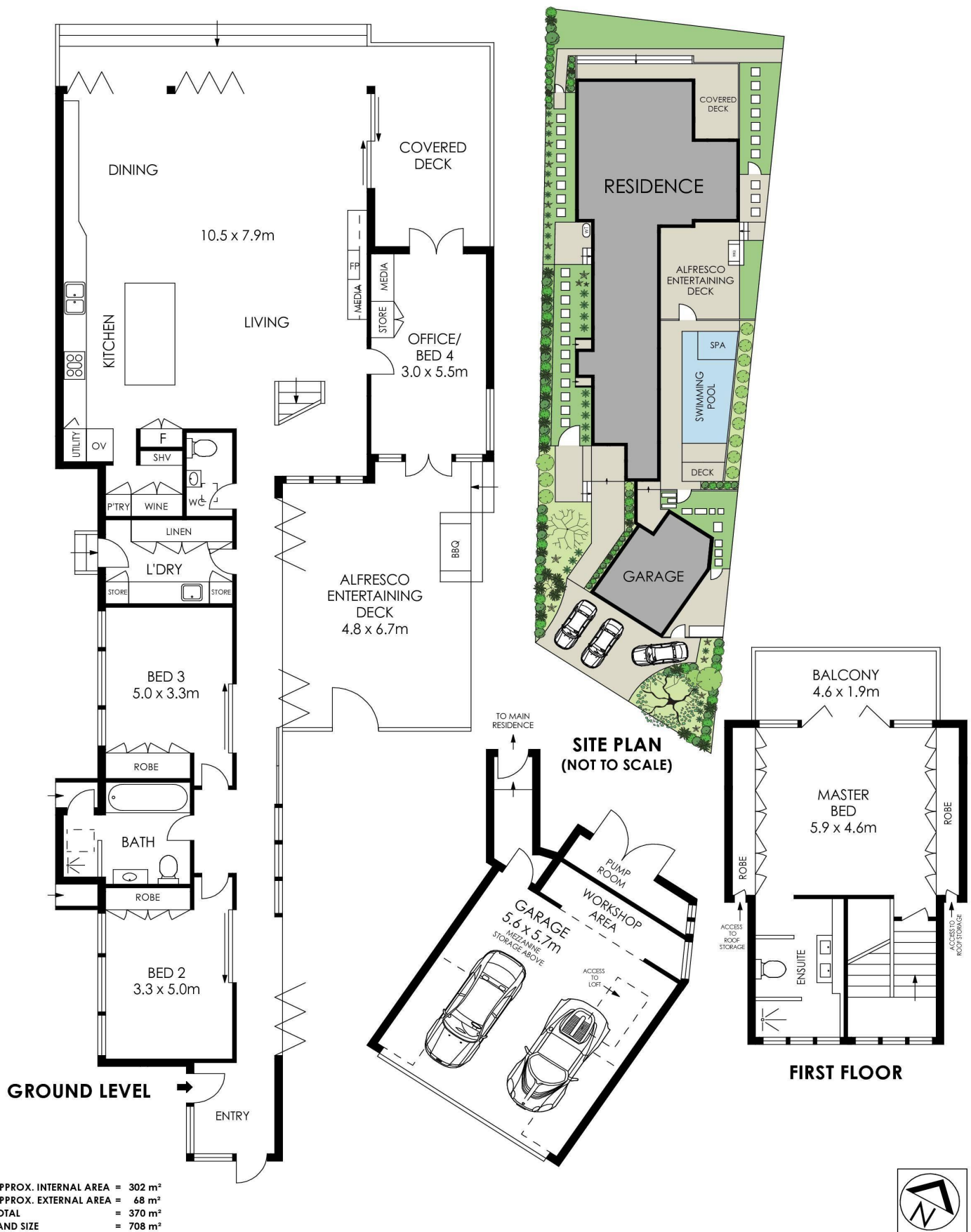
LJ Hooker Palm Beach (02) 9974 5999

1073 Barrenjoey Road, PALM BEACH NSW 2108
palmbeach.ljhooker.com.au | office@ljhpb.com.au



Disclaimer: All information contained therein is gathered from relevant third parties sources. We cannot guarantee or give any warranty about the information provided. Interested parties must rely solely on their own enquiries.

LJ Hooker Palm Beach
(02) 9974 5999



10 Delecta Avenue, Clareville

LJ Hooker

LJ Hooker

LJ Hooker Palm Beach
(02) 9974 5999

Disclaimer: All information contained therein is gathered from relevant third parties sources.
We cannot guarantee or give any warranty about the information provided. Interested parties must rely solely on their own enquiries.