

Claremont, Unit 7/60 Main Road

Affordable Claremont Unit

This first-floor unit is perfectly positioned so close to all conveniences. A leisurely stroll across the road from the Claremont shopping precinct, a few minutes from an array of recreational facilities including the Intercity Cycleway, river front reserves and scenic walks.

Entry is into a sunny and light living room with an adjacent kitchen that has plenty of bench and cupboard space. There are two good sized bedrooms - the master with built-in robes. There is sliding door access to the balcony and a combined bathroom/laundry.

Situated back from the street in a popular block of eight units with off street parking, body corporate manages the well-maintained grounds. This unit is the perfect opportunity for those looking to enter the market or add to their investment portfolio.

Currently Rented at \$385 per week



Disclaimer: All information contained therein is gathered from relevant third parties sources. We cannot guarantee or give any warranty about the information provided. Interested parties must rely solely on their own enquiries.

2

1

1

For Sale

Offers Over \$319,000

View

ljhooker.com.au/5U42FCS

Contact

Gary Cooley

0412 522 964

gcooley@ljhookerpinnacle.com

LJ Hooker Pinnacle Property
(03) 6272 8177

Lease Expires 26th January 2024
Body Corporate; \$1,660.00 per annum
Council Rates; \$1,364.36 per annum
Water Rates; \$1,009.16 per annum

An early inspection is highly recommended, call Gary on 0412 522 964.

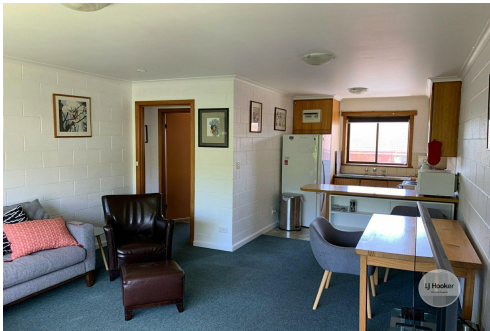
The information contained herein has been supplied to us and we have no reason to doubt its accuracy, however, cannot guarantee it. Accordingly, all interested parties should make their own enquiries to verify this information.

More About this Property

Property ID	5U42FCS
Property Type	Unit
House Size	63 m ²
Land Area	64 m ²
Including	Built-in-Robes

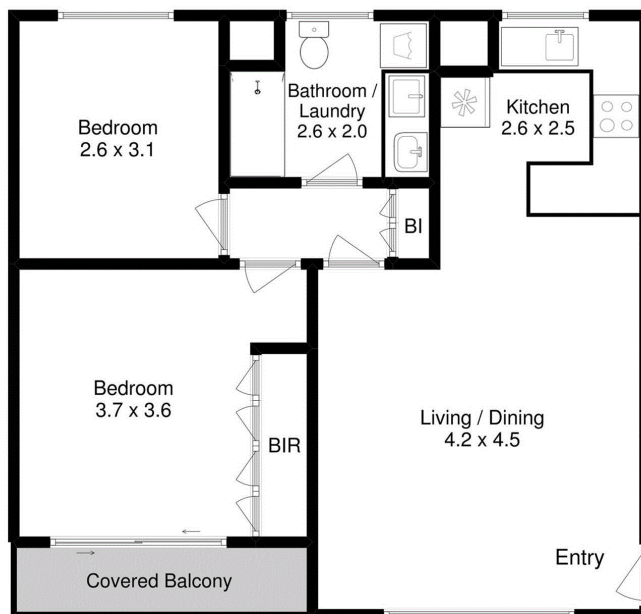
Gary Cooley 0412 522 964
Real Estate Agent | gcooley@ljhookerpinnacle.com

LJ Hooker Pinnacle Property (03) 6272 8177
402 Main Road, GLENORCHY TAS 7010
pinnacleproperty.ljhooker.com.au | hello@ljhookerpinnacle.com



Disclaimer: All information contained therein is gathered from relevant third parties sources.
We cannot guarantee or give any warranty about the information provided. Interested parties must rely solely on their own enquiries.

LJ Hooker Pinnacle Property
(03) 6272 8177



All measurements are internal and approximate.
This plan is a sketch for illustration, not valuation.
Produced by Open2view.com

Approx. house area: 64 sqm

