

## Claremont, 50 Centenary Crescent

### Family-Friendly Home in Claremont

Discover the perfect family retreat in the heart of Claremont! This charming property offers a blend of comfort, space, and stunning views, making it an ideal place for your family to grow and thrive.

#### Key Features:

- 3 Spacious Bedrooms: Ample room for the whole family, with plenty of natural light.
- 1 Family Bathroom: Conveniently designed for everyday use.
- Garage: Secure parking and extra storage space for all your family needs.
- Established Garden: A lovely outdoor space for children to play, family gatherings, or gardening enthusiasts.
- Workshop: Perfect for DIY projects or hobbies, providing a dedicated space for creativity. An opportunity for further development STCA.
- Water Views: Enjoy serene water views from your home, adding to the tranquil atmosphere.



**Disclaimer:** All information contained therein is gathered from relevant third parties sources. We cannot guarantee or give any warranty about the information provided. Interested parties must rely solely on their own enquiries.

3

1

3

**For Sale**  
Please Call

**View**  
[ljhooker.com.au/5X5RFCS](http://ljhooker.com.au/5X5RFCS)

**Contact**  
**Alison Rogers**  
0409 220 211  
[arogers@ljhookerpinnacle.com](mailto:arogers@ljhookerpinnacle.com)

**Emily Bye**  
0409 029 918  
[ebye@ljhookerpinnacle.com](mailto:ebye@ljhookerpinnacle.com)

**LJ Hooker Pinnacle Property Rentals**  
**(03) 6272 8177**



- Land Area: 688.00 sqm, offering plenty of room for outdoor activities and future expansions.

This property is not just a house; it's a place where memories are made. With its family-oriented features and prime location, it's ready to welcome you home. Don't miss out on this incredible opportunity to create lasting memories in Claremont!

For more information or to schedule a viewing, please contact us today!  
The information contained herein has been supplied to us and we have no reason to doubt its accuracy, however, cannot guarantee it. Accordingly, all interested parties should make their own enquiries to verify this information.

## More About this Property

Property ID	5X5RFCS
Property Type	House
Land Area	688 m2
Including	Air Conditioning Toilets (1) Outdoor Entertaining Workshop Secure Parking Fully Fenced

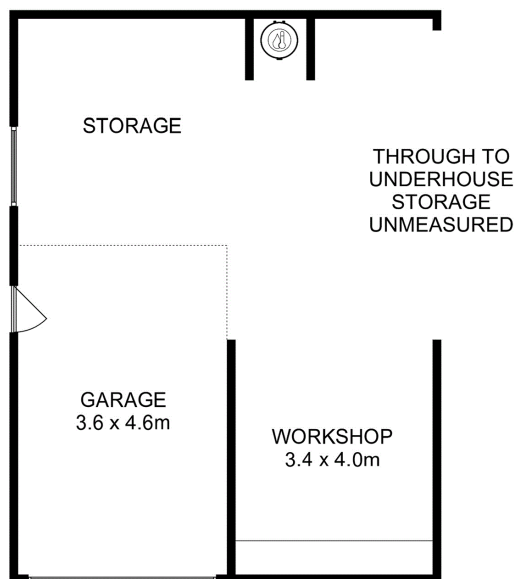
**Alison Rogers 0409 220 211**  
Pinnacle Partner | Property Representative | [arogers@ljhookerpinnacle.com](mailto:arogers@ljhookerpinnacle.com)  
**Emily Bye 0409 029 918**  
Sales Associate to Alison Rogers | [ebye@ljhookerpinnacle.com](mailto:ebye@ljhookerpinnacle.com)

**LJ Hooker Pinnacle Property Rentals (03) 6272 8177**  
122 Murray Street, HOBART TAS 7000  
[pinnacleproperty.ljhooker.com.au](http://pinnacleproperty.ljhooker.com.au) | [hello@ljhookerpinnacle.com](mailto:hello@ljhookerpinnacle.com)

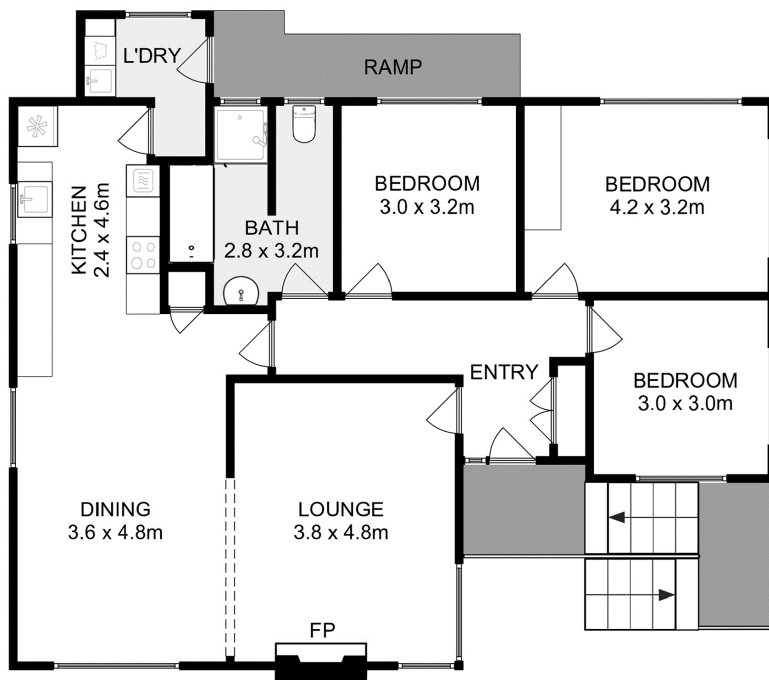


**Disclaimer:** All information contained therein is gathered from relevant third parties sources. We cannot guarantee or give any warranty about the information provided. Interested parties must rely solely on their own enquiries.

**LJ Hooker Pinnacle Property Rentals**  
**(03) 6272 8177**



LOWER GROUND FLOOR



GROUND FLOOR

Total Approx. House Area : 115 sqm  
Total Approx. Garage Area : 70 sqm

All measurements are internal and approximate.  
This plan is a sketch for illustration, not valuation.  
Produced by Open<sup>2</sup>view.com