



Claremont, 5 Jury Place

Nest, Invest or Right-size in this near new home

Welcome to this versatile property conveniently located in the growing suburb of Claremont!

With its modern construction and practical layout, this home is perfect for small families and investors.

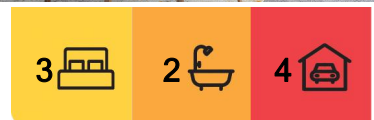
Key Features:

- 2 Bedrooms with built-ins; 1 bedroom with WIR and ensuite: Enjoy ample space for relaxation and privacy.
- 2 Modern Bathrooms: Convenience meets style with contemporary fixtures.
- Garage: Secure parking and extra storage space.
- Air Conditioning: Stay comfortable year-round, no matter the weather.
- Generous Land Area: 489 sqm of potential for outdoor activities and landscaping!

Why You'll Love It:



Disclaimer: All information contained therein is gathered from relevant third parties sources. We cannot guarantee or give any warranty about the information provided. Interested parties must rely solely on their own enquiries.



For Sale
Offers Over \$645,000

View
Sun 15th Jun @ 1:30PM - 2:00PM

Contact
Alison Rogers
0409 220 211
arogers@ljhookerpinnacle.com

LJ Hooker Pinnacle Property
(03) 6272 8177

- Entertaining Made Easy: The open-plan living area flows seamlessly into the outdoor space, perfect for hosting family gatherings or weekend barbecues.
- Natural Light: Large windows fill the home with natural light, creating a warm and inviting atmosphere.
- Family-Friendly Suburb: Claremont offers a vibrant community with parks, schools, and local amenities just a stone's throw away. New projects in the area include Cadbury Chocolate Factory upgrade, new sports centre at the Claremont college and new transport infrastructure plus more.

Don't miss the chance to make this beautiful property your own! Contact us today to schedule a viewing and experience all that this home has to offer.

Some photos include virtual styling to offer an example of how you could arrange your furniture.

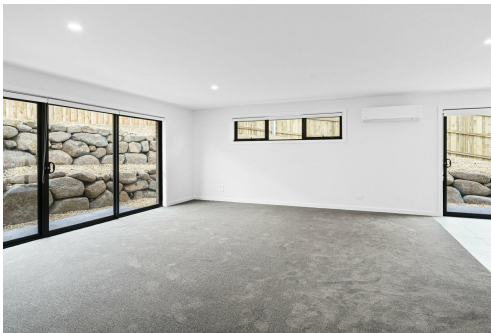
The information contained herein has been supplied to us and we have no reason to doubt its accuracy, however, cannot guarantee it. Accordingly, all interested parties should make their own enquiries to verify this information.

More About this Property

Property ID	5XKGFCS
Property Type	House
Land Area	489 m2
Including	Air Conditioning Toilets (2) Built-in-Robes Secure Parking

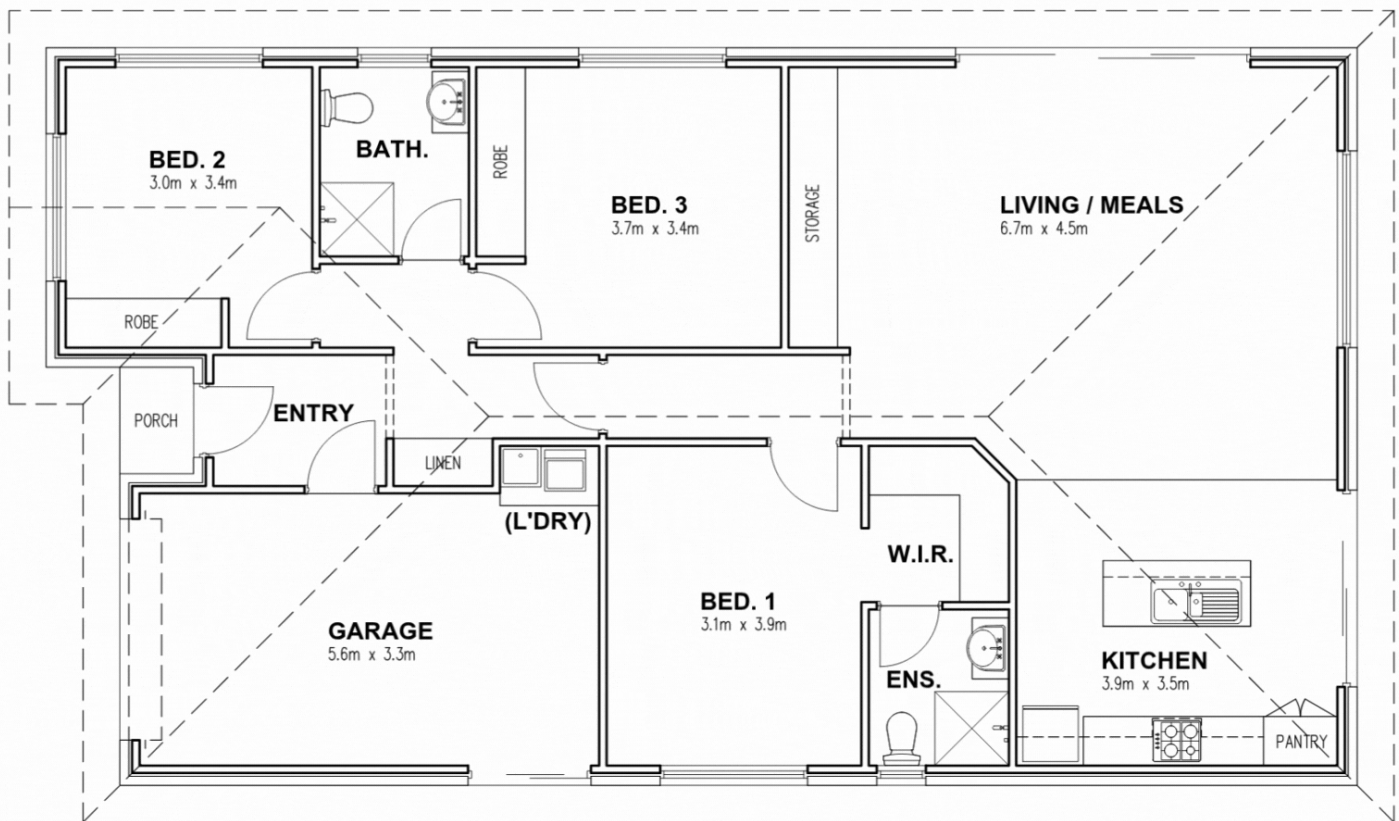
Alison Rogers 0409 220 211
Pinnacle Partner | Property Representative | arogers@ljhookerpinnacle.com

LJ Hooker Pinnacle Property (03) 6272 8177
402 Main Road, GLENORCHY TAS 7010
pinnacleproperty.ljhooker.com.au | hello@ljhookerpinnacle.com



Disclaimer: All information contained therein is gathered from relevant third parties sources. We cannot guarantee or give any warranty about the information provided. Interested parties must rely solely on their own enquiries.

LJ Hooker Pinnacle Property
(03) 6272 8177



5 JURY PLACE, CLAREM FLOOR PLAN

AREAS:

DWELLING (INCL. GARAGE) = 138.2 m²
 (GARAGE INTERNAL) = 19.3 m²
 ENTRY PORCH = 1.2 m²