



Sold



5 Jury Place, Claremont

CALLING ON INVESTORS!

Welcome to this versatile and beautifully presented property, ideally located in the growing and family-friendly suburb of Claremont. Whether you're searching for a savvy investment or a future home, this opportunity offers both comfort and convenience in equal measure.

Currently tenanted with lovely occupants paying \$570 per week, this home is a ready-made investment with solid returns. Inside, the property features two spacious bedrooms, both with built-in wardrobes. Plus the master suite is a standout, offering a walk-in robe and a private ensuite that provides extra comfort and privacy. The primary bathroom is stylishly finished with contemporary fixtures, offering both function and flair.

The open-plan living area is bright and welcoming, enhanced by large windows that fill the space with natural light and flows seamlessly into the outdoor space. Air conditioning ensures year-round comfort, while the secure garage provides safe parking and additional storage.

Claremont itself is a rapidly developing suburb that continues to attract families, professionals, and investors. The area boasts parks, schools, and local shopping amenities all within easy reach.

3 2 4

FOR SALE

Offers Over \$645,000

AGENTS

Jeff Hamilton

0404 888 538

jhamilton@ljhookerpinnacle.com

Bree Harrison

0400 770 514

barrisson@ljhpinnacle.com.au

AGENCY

LJ Hooker Pinnacle Property

(03) 6272 8177

All information contained therein is gathered from relevant third parties sources.
We cannot guarantee or give any warranty about the information provided.
Interested parties must rely solely on their own enquiries.

LJ Hooker

This is a fantastic opportunity to secure a low-maintenance, well-located property in a thriving community. Whether you're expanding your portfolio or looking for your next home, this property offers outstanding value and lifestyle potential.

Contact us today to arrange your inspection and experience all this home has to offer.

Please note: Some images may include virtual furniture styling to help illustrate the space. While all information provided is believed to be accurate, interested parties should conduct their own enquiries to verify details.

MORE DETAILS

Property ID	1FJ1F
Property Type	House
House Size	138 m2
Land Area	489 m2
Including	Air Conditioning Toilets (2) Dishwasher Built-in-Robes Secure Parking Fully Fenced Remote Garage

Jeff Hamilton 0404 888 538

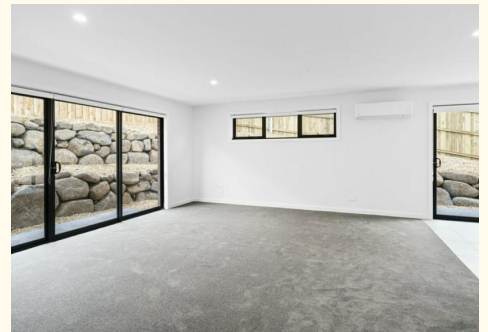
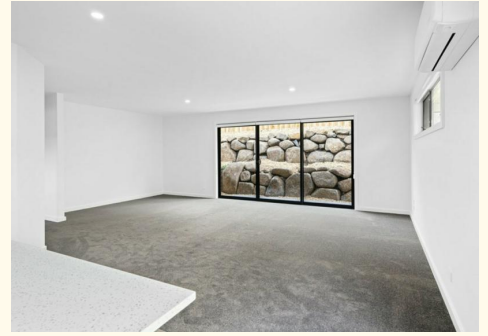
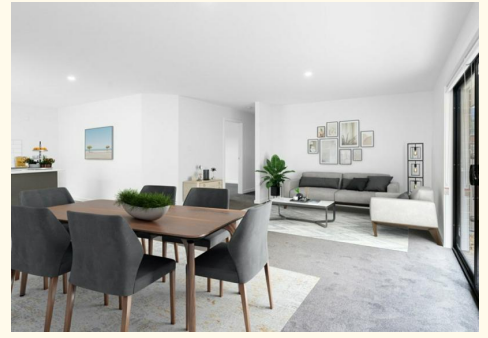
Pinnacle Partner | Property Representative |
jhamilton@ljhookerpinnacle.com

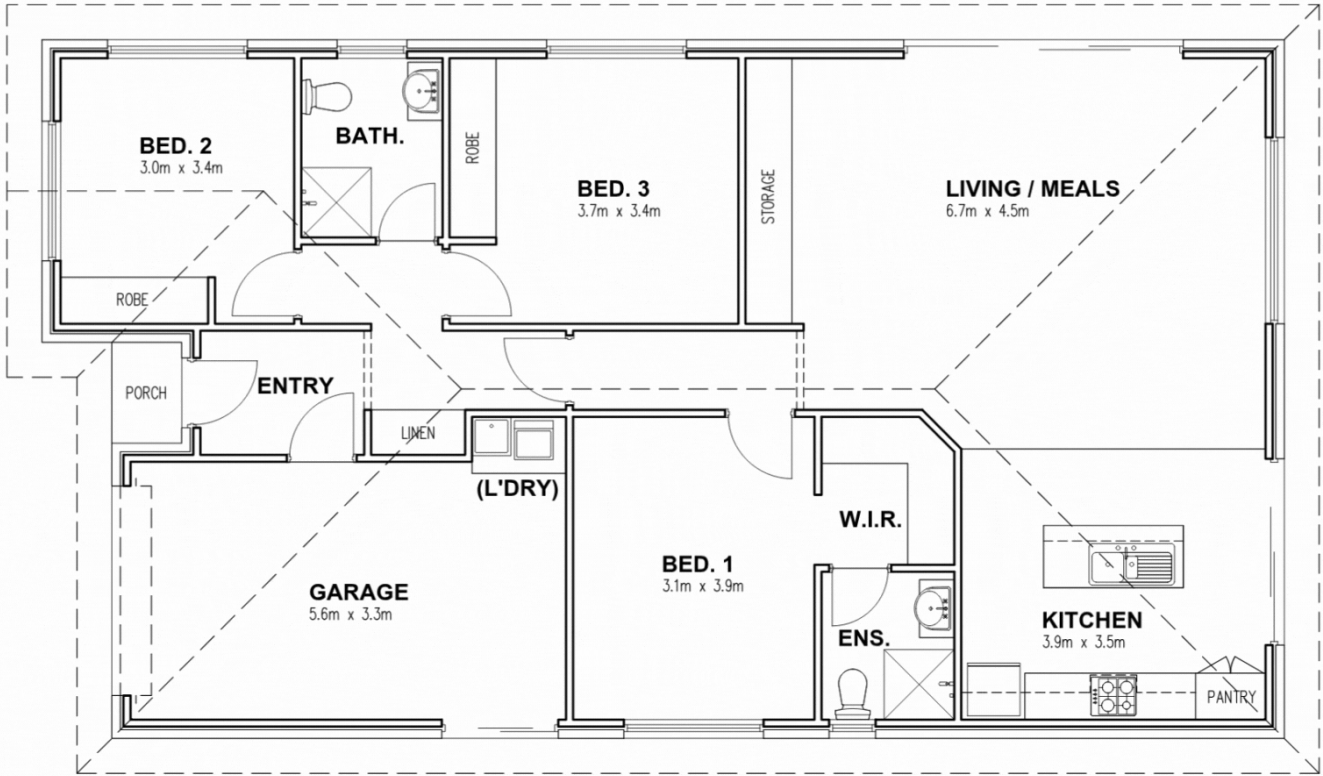
Bree Harrisson 0400 770 514

Executive Assistant to Jeff Hamilton | barrisson@ljhpinnacle.com.au

LJ Hooker Pinnacle Property (03) 6272 8177

402 Main Road, GLENORCHY TAS 7010
pinnacleproperty.ljhooker.com.au | hello@ljhpinnacle.com.au





**5 JURY PLACE, CLAREM
FLOOR PLAN**

AREAS:
 DWELLING (INCL. GARAGE) = 138.2 m²
 (GARAGE INTERNAL) = 19.3 m²
 ENTRY PORCH = 1.2 m²