

Claremont, 17 Leighland Road

Immaculate Family Living in a Renovated Gem

Welcome to 17 Leighland Road, a beautifully renovated family home that offers the perfect blend of modern convenience and spacious comfort in one of Claremont's most sought-after pockets.

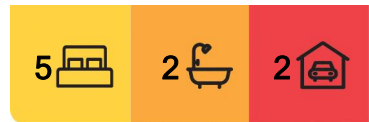
Boasting five generous bedrooms, two stylish bathrooms, and two versatile living areas, this stunning home is ideal for growing families, multigenerational living, or those who simply value extra space.

Every detail has been thoughtfully considered in the recent renovation. The sleek, contemporary kitchen flows seamlessly into the living space, perfect for both entertaining and everyday living. Quality finishes, fresh interiors, and abundant natural light throughout enhance the home's welcoming feel.

Step outside and enjoy a private, low-maintenance yard – a secure space for



Disclaimer: All information contained therein is gathered from relevant third parties sources. We cannot guarantee or give any warranty about the information provided. Interested parties must rely solely on their own enquiries.



For Sale
Please Call

View
ljhooker.com.au/1HJ1F

Contact
Ben Ayers
0417 518 608
bayers@ljhpinnacle.com.au

LJ Hooker Pinnacle Property
(03) 6272 8177

children and pets, with ample room to relax or entertain.

Conveniently located just minutes from local schools, parks, shopping centres, and public transport, 17 Leighland Road offers the lifestyle you've been searching for in a move-in-ready home.

Key Features:

- 5 spacious bedrooms
- 2 modern bathrooms
- 2 living rooms
- Kitchen with a view
- Updated flooring, paint, and finishes throughout
- Fully fenced backyard, perfect for families
- Prime Claremont location, close to all amenities

This is a rare opportunity to secure a fully updated home in a family-friendly location — all the hard work has been done, so you can move in and enjoy immediately.

Contact us today to arrange your inspection.

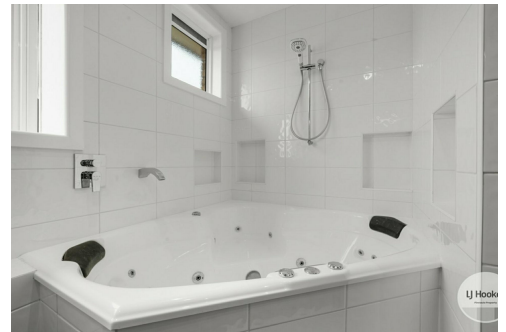
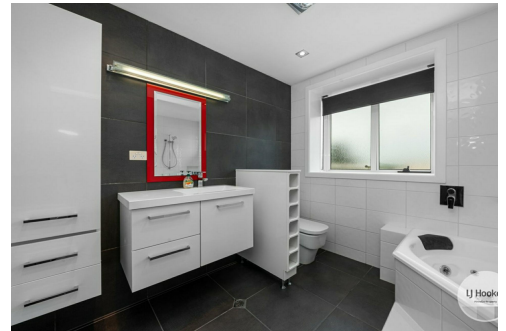
The information contained herein has been supplied to us and we have no reason to doubt its accuracy, however, cannot guarantee it. Accordingly, all interested parties should make their own enquiries to verify this information.

More About this Property

Property ID	1HJ1F
Property Type	House
House Size	134 m2
Land Area	510 m2
Including	Toilets (2) Courtyard Deck Outdoor Entertaining

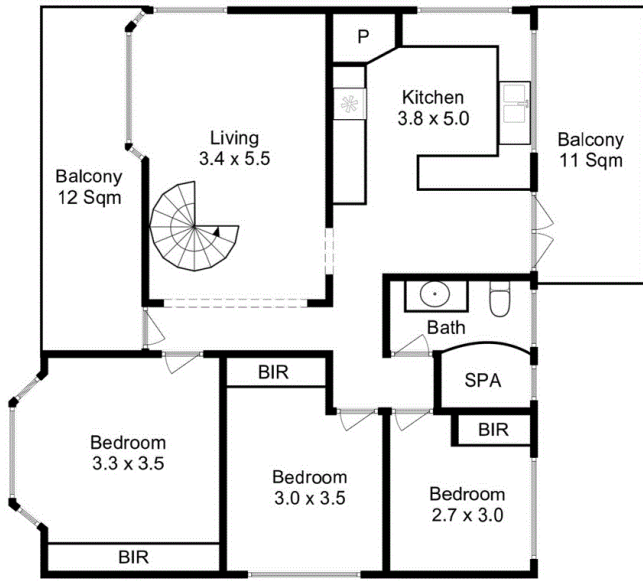
Ben Ayers 0417 518 608
Property Representative | bayers@ljhpinnacle.com.au

LJ Hooker Pinnacle Property (03) 6272 8177
402 Main Road, GLENORCHY TAS 7010
pinnacleproperty.ljhooker.com.au | hello@ljhookerpinnacle.com



Disclaimer: All information contained therein is gathered from relevant third parties sources. We cannot guarantee or give any warranty about the information provided. Interested parties must rely solely on their own enquiries.

LJ Hooker Pinnacle Property
(03) 6272 8177



This floor plan is for marketing purposes only and is to be used as a guide

