




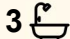
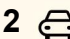
2002/2 Marcus Clarke Street, City

Is This The Best View In Canberra?

There are some homes in the bush capital that can lay claim to having great views, but every once in a while you come across something like this City Centre Penthouse that absolutely takes your breath away.

Right at the edge of the New Acton precinct, stands the tallest residential building in the Canberra's Inner Regions, and the top two floors are where you could be residing. Upon reaching the 20th floor you open your front door and walk into a huge living room and you're immediately struck by what has to be the most spectacular and iconic view in Canberra. This really is the centerpiece of the whole apartment, and it's visible from just about anywhere you go. Whether it's the lounge, dining, two of the three bedrooms or even the spa bath in the main ensuite you are always able to gaze out across lake Burley Griffin and to prominent landmarks such as:

- Parliament House
- The National Museum
- Commonwealth Bridge
- Lennox Gardens
- The National Library
- The National Gallery

3  3  2 

FOR SALE
\$1,490,000+

VIEW
By Appointment

AGENTS
Nic Salter-Harding
0412 600 085
nic.salter-harding@ljdickson.com.au

AGENCY
LJ Hooker Dickson
(02) 6257 2111

All information contained therein is gathered from relevant third parties sources. We cannot guarantee or give any warranty about the information provided. Interested parties must rely solely on their own enquiries.

 **LJ Hooker**

- The Carillion

Of course an outlook like this needs a home to match, and in that respect your new City Centre Penthouse spans 180m² of internal living across two levels, each with their own large balconies. The balcony on the main floor is large enough to host a substantial gathering, which is lucky, as this is the kind of place that you will surely want to share with friends and family. Imagine Skyfire or New Year's Eve from right here.

Each bedroom also has its own ensuite, and that main bedroom is absolutely enormous, with more than enough room for both a king bed and home office.

Capital Tower is known for both the high quality of its construction, and the extent of its on-site amenities. The pool and barbecue area are a delightful place to spend a warm afternoon, and the tennis courts, squash court, sauna and gym all add to the sense of class and exclusivity you feel by being here.

Of course, right on your doorstep there is the noteworthy New Acton precinct, with some of Canberra's favourite food and entertainment venues and it's a quick and easy walk to the ANU, CBD and Commonwealth Park. Forget trying to find somewhere to park during Florida, you need only cross the street via the footbridge straight from your front door.

What's on offer:

- 2 Storey Penthouse
- Incredible Panoramic Views
- 3 bedrooms, all with ensuites
- Two large, curved balconies
- Ducted heating and cooling

• site amenities:

- Swimming Pool
- BBQ facilities
- Owner's Lounge
- Tennis Courts
- Squash Court
- Gym
- Sauna
- Reception Desk
- Dedicated Building Manager
- Secure visitor parking



MORE DETAILS

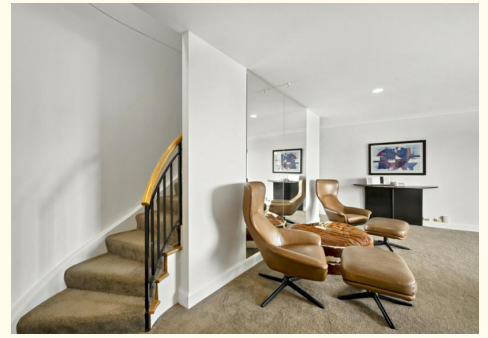
Property ID 1HKMG5F92
Property Type Apartment
House Size 179 m2
EER 4

Nic Salter-Harding 0412 600 085

Licensed Agent & Auctioneer ACT/NSW | nic.salter-harding@ljhdickson.com.au

LJ Hooker Dickson (02) 6257 2111

36 Woolley Street, DICKSON ACT 2602
dickson.ljhooker.com.au | info@ljhdickson.com.au



All information contained therein is gathered from relevant third parties sources.
We cannot guarantee or give any warranty about the information provided.
Interested parties must rely solely on their own enquiries.