



Church Point, 148 McCarrs Creek Road

Deepwater Jetty, Potential Dual Living, Water View

The spectacular views and natural light fill every corner of this spacious home. The water stretches out before you, boats bobbing in the breeze. Across the water, sandy coves and bush trails, wildflowers, waterfalls, and wildlife. At the bottom of your landscaped gardens, a jetty, a place to keep your boat so you can explore all of Sydney's magnificent waterways.

Set over three levels with balconies on each overlooking Pittwater and the National Park, the wide block allows the home to maximise the views. Enter on the central level, where the family comes together, a large entertaining living and dining room, a large kitchen with island bench and timber bench tops, adjoining meals area and family room. Upstairs a parent's retreat, master bedroom, walk-in-robe and ensuite. Downstairs three bedrooms plus another Games room and through a separate entrance a large self contained studio, for potential dual occupancy, or an office. The studio/guest quarters has a separate entrance. Added to this there is an abundance of storage. The home has space for

5

3

5

For Sale

Deep Waterfront with Dual Living

View

By Appointment

Contact

Juliet Wills

0438 418 833

jwills@ljhmv.com.au



LJ Hooker Mona Vale
(02) 9979 8000

Disclaimer: All information contained therein is gathered from relevant third parties sources. We cannot guarantee or give any warranty about the information provided. Interested parties must rely solely on their own enquiries.

everyone.

Parking is a breeze, with a two- car garage with covered entry to the house plus an additional three car spaces.

Feel like you're on holiday every day, yet Sydney and all it has to offer, is just a 45-minute drive away (traffic allowing). A bus stop out front takes you to the express B1 bus from Mona Vale to Wynyard.

Take a short stroll, or paddle to the Point for cafes & restaurants, soak up the vibe, as artists, boaties, cyclists and musicians mingle. Take a sailing lesson, dance to live music on a Sunday afternoon, or catch the ferry for a tour around Pittwater.

Walk or paddle in any direction and you'll soon understand why residents of Sydney who chose Church Point as their home stay in their homes for longer than any other suburb. It's paradise.

Disclaimer:

All information contained herewith, including but not limited to the general property description, price and the address, is provided to LJ Hooker Mona Vale by third parties. We have obtained this information from sources we believe to be reliable; however, we cannot guarantee its accuracy. The information contained herewith should not be relied upon and you should make your own enquiries and seek advice in respect of this property or any property on this website.

More About this Property

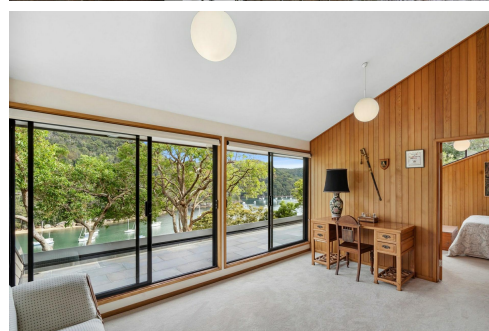
Property ID	2VW9F6K
Property Type	House
House Size	356 m ²
Land Area	1278 m ²
Including	Ensuite Dishwasher

Juliet Wills 0438 418 833

Licensed Real Estate Agent | jwills@ljhmv.com.au

LJ Hooker Mona Vale (02) 9979 8000

3/18 Bungan Street, MONA VALE NSW 2103
monavale.ljhooker.com.au | monavale@ljhmv.com.au



Disclaimer: All information contained therein is gathered from relevant third parties sources. We cannot guarantee or give any warranty about the information provided. Interested parties must rely solely on their own enquiries.

LJ Hooker Mona Vale
(02) 9979 8000

148 McCarrs Creek Road, Church Point



Approx. Internal Area 356sqm

Approx. Land Area 1278sqm

Whilst bwrm.com.au has made every attempt to ensure the accuracy of the floor plan contained here, measurements are approximate and no responsibility is taken for any error, omission, or mis-statement. This plan is for illustrative purposes only.

