



Christie Downs, 74 Elizabeth Road

Spacious home on 750sqm (approx) with endless options - an arms reach of the coast

Best Offers By Tuesday 9th July @ 12pm

Whether you're looking for a move-in ready home, something to renovate or an investment, this home will have something for everyone.

Boasting a spacious living and dining area, with large windows and laminate flooring, a well kept kitchen with a gas cooktop and ample cupboard and bench space. The laundry can conveniently be accessed from either the kitchen or hallway, and the central bathroom offers a separate bathtub and WC. The home offers three spacious bedrooms, one with built-in wardrobes.

Outside, you'll find established gardens which feature garden beds and fruit trees, including oranges and apricots. The paved undercover area offers an ideal space for year



For Sale
Contact Agent

View
ljhooker.com.au/WUXHDM

Contact
Lisa Xu
0432 235 818
lisax@ljmw.com.au



LJ Hooker Mile End | Woodville
(08) 8352 7111

Disclaimer: All information contained therein is gathered from relevant third parties sources. We cannot guarantee or give any warranty about the information provided. Interested parties must rely solely on their own enquiries.

round entertaining. Plenty of off-street parking is available, with a long driveway, drive through carport and a garage.

You'll be an arms reach from the coast, Christies Beach offers plenty of cafe options, Rotary Park and playground, plus an excellent walking trail to Port Noarlunga. Centro Colonnades is within walking distance, which features many department stores, plus smaller boutique shops, cafes and restaurants. Public transport is a breeze with a bus stop almost at your doorstep, and Christie Downs and Noarlunga train stations nearby. A quick walk to Christies Beach Primary and High Schools, plus many other great schooling options nearby.

Key Features

- 3 good sized bedrooms, one with a built in wardrobe
- Central bathroom with separate WC
- Kitchen with gas cooktop
- Laundry with two way access
- Ample off street parking including a garage
- Spacious entertaining area
- Established fruit trees and garden beds, plus a garden shed
- Split system AC to living area, and separate heating
- Laminate flooring throughout the home
- 20m (approx) frontage

Specifications

Title: Torrens Title

Year built: c1970

Land size: 750sqm (approx)

Council: City of Onkaparinga

Council rates: TBC

ESL: TBC

SA Water & Sewer supply: TBC

All information provided including, but not limited to, the property's land size, floorplan, floor size, building age and general property description has been obtained from sources deemed reliable. However, the agent and the vendor cannot guarantee the information is accurate and the agent, and the vendor, does not accept any liability for any errors or oversights. Interested parties should make their own independent enquiries and obtain their own advice regarding the property. Should this property be scheduled for Auction, the Vendor's Statement will be available for perusal by members of the public 3 business days prior to the Auction at the offices of LJ Hooker Mile End at 206a Henley Beach Road, Torrensville and for 30 minutes prior to the Auction at the place which the Auction will be conducted. RLA 242629



LJ Hooker Mile End | Woodville
(08) 8352 7111

Disclaimer: All information contained therein is gathered from relevant third parties sources. We cannot guarantee or give any warranty about the information provided. Interested parties must rely solely on their own enquiries.

More About this Property

Property ID	WUXHDM
Property Type	House
Land Area	750 m ²
Including	Air Conditioning Built-in-Robes Close to Schools Close to Shops Close to Transport

Lisa Xu 0432 235 818

Sales Executive | lisax@ljmw.com.au

LJ Hooker Mile End | Woodville (08) 8352 7111

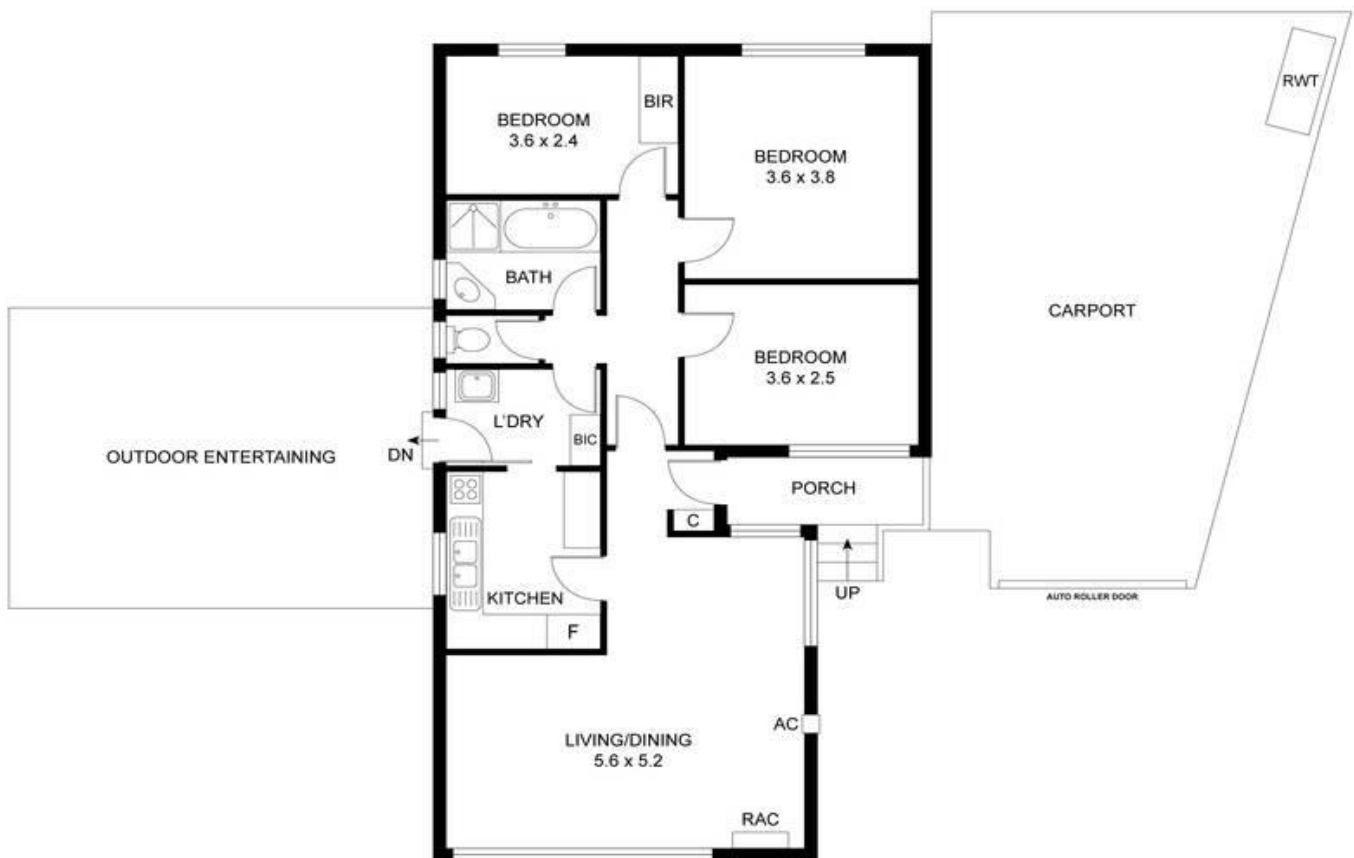
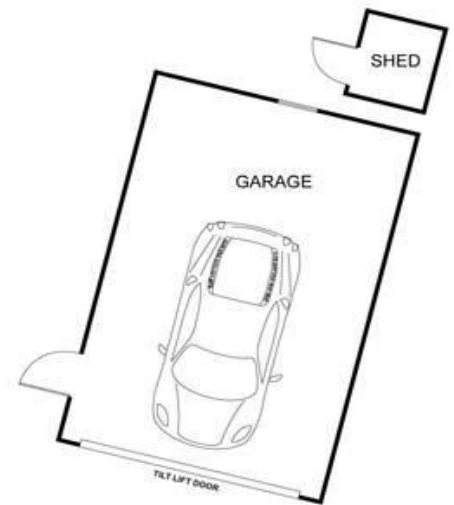
206A Henley Beach Road, TORRENSVILLE SA 5031

mileendwoodville.ljhooker.com.au | admin@ljhookermileend.com.au



Disclaimer: All information contained therein is gathered from relevant third parties sources.
We cannot guarantee or give any warranty about the information provided. Interested parties must rely solely on their own enquiries.

**LJ Hooker Mile End | Woodville
(08) 8352 7111**



This drawing is for illustration purposes only. All measurements are internal and approximate. Details intended to be relied upon should be independently verified.