

Chittaway Point, 2 Ansell Close

Welcome to Your Summer Oasis!

Located in a quiet cul de sac, this immaculately presented 4 bedroom, 2 bathroom home offers the perfect balance of indoor and outdoor living. Boasting modern renovations and a seamless flow between spacious living areas and an expansive outdoor entertainment space, this property features a stunning merbau deck, complemented by a sparkling solar heated pool, ideal for family life and hosting guests. Your first summer here will truly be one to remember!

Main Features Include:

- * Move In Ready - Fully renovated throughout, waiting for you to make it your own.
- * Sparkling Solar Heated Pool - Enjoy all day sun in the north west facing pool, perfect for relaxing and entertaining.
- * Modern Kitchen - A stylish space with stone benchtops, premium appliances, and ample storage.



Disclaimer: All information contained therein is gathered from relevant third parties sources. We cannot guarantee or give any warranty about the information provided. Interested parties must rely solely on their own enquiries.

4

2

1

For Sale
Please Call

View
l.jhooker.com.au/WDCGJF

Contact
Regan Coles
0456 881 738
regan.coles@l.jhooker.com.au

**LJ Hooker Tumby Umbi | Killarney
Vale | Bateau Bay
(02) 4389 1722**

- * Expansive Floor Plan - Open layout leading to a stunning covered outdoor entertainment area, featuring glass balustrade and beautiful merbau deck.
- * 4 Spacious Bedrooms - Each filled with natural light and complimented with built in robes.
- * Beautiful Bathrooms - Main bathroom showcasing designer touches and floor to ceiling tiles, plus a second bathroom with laundry.
- * Fully Fenced Yard - Safe and secure for children and pets, with ample off street parking for boats or caravans.
- * Level 556 Square Metre Block - Offering a wide 25 metre frontage for great street appeal.
- * Prime Location - Nestled in a friendly community, just minutes from local shops, schools, and the Sunshine waterfront reserve - enjoy ultimate lifestyle convenience.
- * Additional Features - Plantation shutters, air conditioning, a slow combustion fireplace, ceiling fans, and energy efficient 9.9kW solar panels.

Do not let this opportunity slip through your fingers, reach out now for more details or to schedule your inspection. This is a chance you will not want to miss! Contact Regan today and make your dream home a reality.

Disclaimer: All information contained herein is gathered from sources we consider to be reliable, however we cannot guarantee or give any warranty about the information provided. All images, border/s, property boundaries and floor plans are indicative of the property and for illustrative purposes only. Any development potential stated herein is suggestive only and may be subject to relevant approvals, as such it is not to be relied upon. All distances and measurements are approximate. Interested parties must solely rely on their own enquiries.

More About this Property

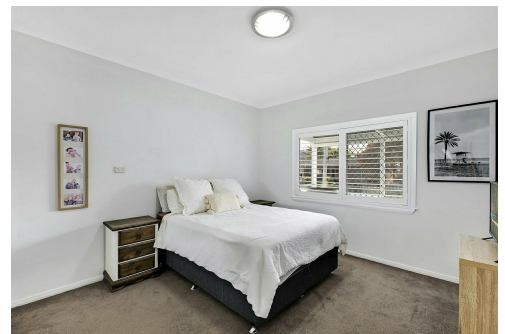
Property ID	WDCGJF
Property Type	House
Land Area	556 m ²

Regan Coles 0456 881 738

Sales Consultant | regan.coles@ljhooker.com.au

LJ Hooker Tumbi Umbi | Killarney Vale | Bateau Bay (02) 4389 1722

Shop 2, 140 Wyong Road, KILLARNEY VALE NSW 2261
tumbiumbi@ljhooker.com.au | tumbiumbi@ljhooker.com.au

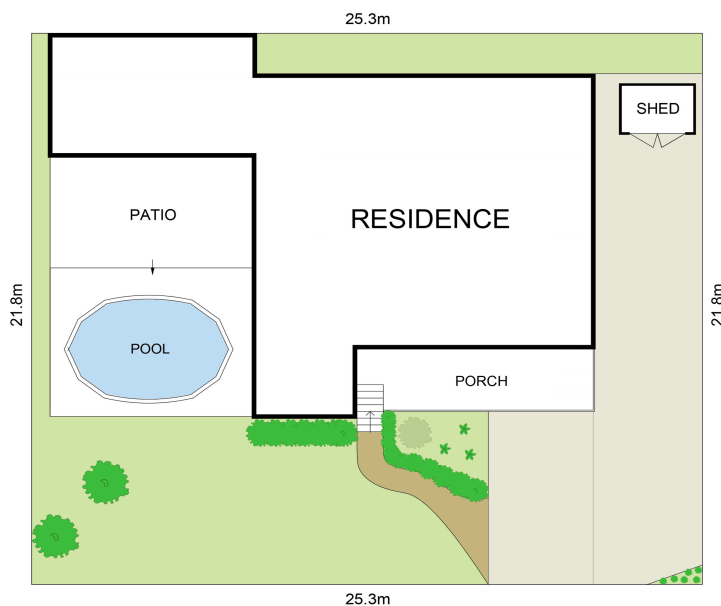


Disclaimer: All information contained therein is gathered from relevant third parties sources. We cannot guarantee or give any warranty about the information provided. Interested parties must rely solely on their own enquiries.

**LJ Hooker Tumbi Umbi | Killarney
 Vale | Bateau Bay
 (02) 4389 1722**



FLOOR PLAN



SITE PLAN

0 1 2 3 4 5 SCALE (METRES)

Scale in metres. Indicative only. Dimensions are approximate. All information contained herein is gathered from sources we believe to be reliable. However we cannot guarantee its accuracy and interested persons should rely on their own enquiries

INT : 180m²
EXT : 353m² NOT TO SCALE



2 Ansell Close, Chittaway point