



20 Moloki Avenue, Chittaway Bay

The Jewel in the Crown!

This renovated three bedroom home has the perfect blend of both a classical and coastal vibe with all the modern comforts.

Located on a quiet no - through road and within minutes walk to the lake, shops, school and parks!

Step inside to a sun drenched main living area, that provides an airy and spacious feel to sit back and relax, with an updated bar for entertaining.


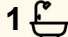

The stunning kitchen is finished with contrasting cabinetry and modern appliances including ceramic cooktop.

The bedrooms are generous in size, with a built-in robe to the main and second bedroom.

Updated bathroom with sparkling finish and modern look.

Internal laundry with rear yard access.

The low maintenance grounds allow the perfect amount of space to entertain with a new storage shed.

3  1  2 

FOR SALE
\$975,000

VIEW
By Appointment

AGENTS
Justin Bond
0406 999 007
justin.bond@ljhooker.com.au

Belinda Bond
0400 544 557
belinda.bond@ljhooker.com.au

AGENCY
LJ Hooker Tumbi Umbi | Killarney Vale |
Bateau Bay
(02) 4389 1722

All information contained therein is gathered from relevant third parties sources.
We cannot guarantee or give any warranty about the information provided.
Interested parties must rely solely on their own enquiries.

 **LJ Hooker**

A single lock up garage with remote entry completes the package.

Finished throughout with ducted air conditioning, new blinds and curtains, fresh paint, down lighting and polished flooring.

The Location:

700 m to Chittaway Bay Public School and Chittaway Shopping Centre.

4.7 kms to Tuggerah Station, Westfield Tuggerah and M1 Motor way.

5.9 kms to Mingara Recreation Club.

9.4 kms to Shelly Beach Golf Club and Beach.

The level block provides easy to maintain grounds.

This is one neat and tidy package that is ready for you to move in and enjoy; or could provide for an easy-care investment.

Call Justin or Belinda today for further information.

Disclaimer: All information contained herein is gathered from sources we consider to be reliable, however we cannot guarantee or give any warranty about the information provided. All images, border/s, property boundaries and floor plans are indicative of the property and for illustrative purposes only. Any development potential stated herein is suggestive only and may be subject to relevant approvals, as such it is not to be relied upon. All distances and measurements are approximate. Interested parties must solely rely on their own enquiries.

MORE DETAILS

Property ID	WVQGJF
Property Type	House
Land Area	461.6 m2

Justin Bond 0406 999 007

Principal - Licensee | justin.bond@ljhooker.com.au

Belinda Bond 0400 544 557

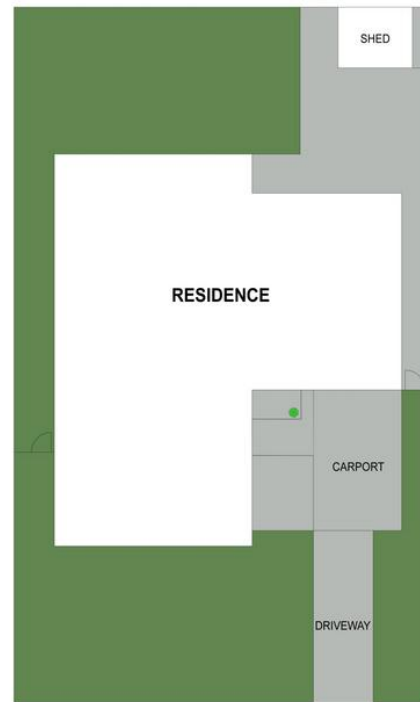
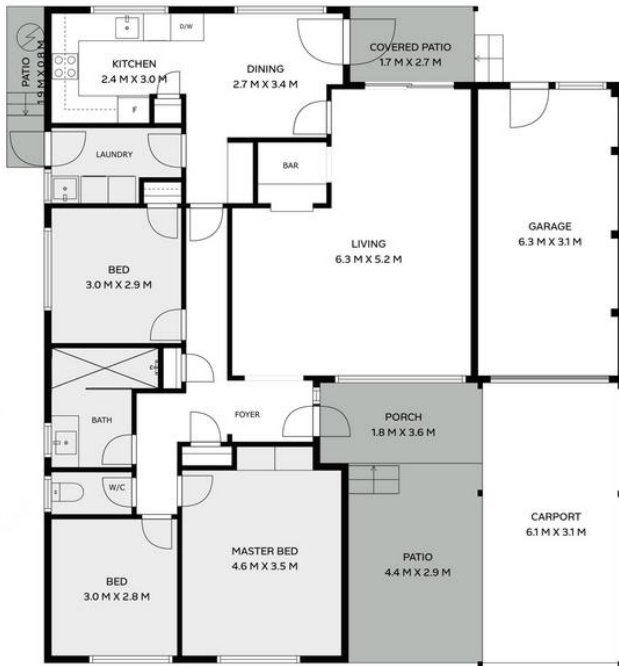
Principal - Licensee | belinda.bond@ljhooker.com.au

LJ Hooker Tumbi Umbi | Killarney Vale | Bateau Bay (02) 4389 1722

Shop 2, 140 Wyong Road, KILLARNEY VALE NSW 2261
tumbiumbi.ljhooker.com.au | tumbiumbi@ljhooker.com.au



20 Moloki Avenue, Chittaway Bay



SITE PLAN

Scale in metres. Indicative only. Dimensions are approximate.
 All information contained here in is gathered from sources we believe to be reliable.
 However we cannot guarantee its accuracy and interested persons should rely on their own enquiries.

