

1003/18 Park Lane, Chippendale

2 🏠 2 🚿 1 🚗

Glamorous dual Key Apartment - Live in one and rent the other

Offering exceptional lifestyle and convenient location, this glamorous dual key apartment has all the luxury's one could desire, and presents great flexibility for an owner to occupy or lease or both.

- Dual key design offering one-bedroom apartment and self-contained studio
- Separate living, laundry, kitchen, bathroom and winter garden
- Sun filled living room with porcelain tiles, flowing seamless onto enclosed balconies
- Gourmet gas kitchen with European appliances and granite finish
- Bedrooms with build-in wardrobe, reverse cycle air conditioning
- Modern bathrooms with sleek design and well appointed finishes
- Positioned on high level with northwest aspect and abundance of natural light
- Secured car space and storage cage in the basement
- Security building with 24-hour attentive concierge
- Resort style fitness centre with pool and gymnasium, rooftop BBQ area & spa
- Ideal for astute investors who likes to maximise their return
- Located in the Central Park development with Chippendale Green, shopping, dining and entertainment all at your doorsteps
- Leisure walk to Broadway Shopping Centre, universities and

FOR SALE

\$1,175,000 Dual Key Apartment

AGENTS

John Zheng
0408 330 118
john.zheng@ljhooker.com.au

Tara Phillips
info.pyrmont@ljhooker.com.au

AGENCY

LJ Hooker Pyrmont
(02) 9660 8933

All information contained therein is gathered from relevant third parties sources.
We cannot guarantee or give any warranty about the information provided.
Interested parties must rely solely on their own enquiries.

 **LJ Hooker**

Central Station

- Unbeatable investment opportunity with potential rent of \$1,800 per week

Contact: John Zheng 0408 330 118

MORE DETAILS

Property ID	SG9GNZ
Property Type	Apartment
House Size	100 m2
Land Area Including	118 m2
	Ensuite
	Air Conditioning
	Alarm
	Intercom
	Pool
	Balcony
	Gym
	Outdoor Entertaining
	Built-in-Robes
	Secure Parking

John Zheng 0408 330 118

Director, Licensee | john.zheng@ljhooker.com.au

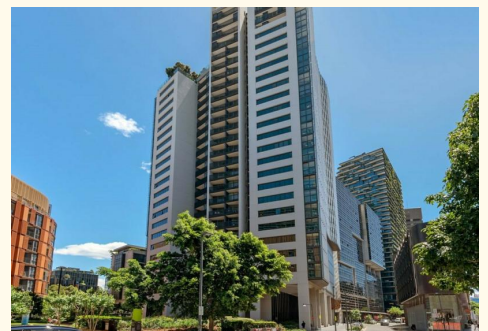
Tara Phillips

Team Assistant | info.pyrmont@ljhooker.com.au

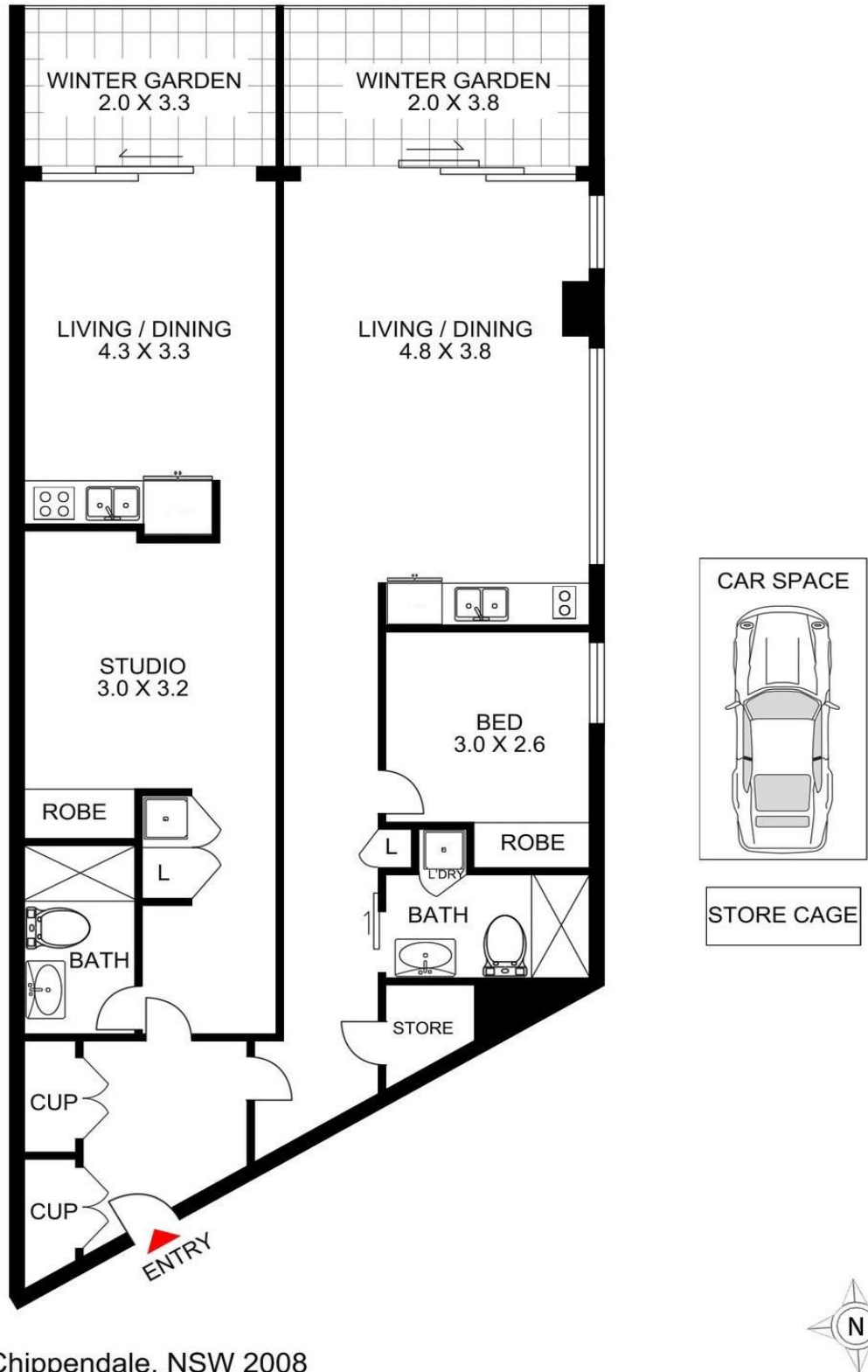
LJ Hooker Pyrmont (02) 9660 8933

461 Harris Street, ULTIMO NSW 2007

pyrmont.ljhooker.com.au | pyrmont@ljhooker.com.au



All information contained therein is gathered from relevant third parties sources.
We cannot guarantee or give any warranty about the information provided.
Interested parties must rely solely on their own enquiries.



1003/18 Park Lane, Chippendale, NSW 2008

All information presented is gathered from sources we believe are reliable. We have no reason to doubt it's accuracy, however, cannot guarantee it. The plans shown here are for presentation purposes & are not part of any legal document or title and & are subject to errors, omissions & inaccuracies and should not be used as sole reference. All measurements & figures are approximate. Interested parties should make & rely on their own enquiries.

All information contained therein is gathered from relevant third parties sources.
We cannot guarantee or give any warranty about the information provided.
Interested parties must rely solely on their own enquiries.

 **LJ Hooker**