



LJ Hooker



LJ Hooker



LJ Hooker

7/48 Charteris Crescent, Chifley

2 🏠 1 🚿 1 🚗

Charming Townhouse in Chifley

Tucked away in the community of Chelsea Grove in the highly sought-after suburb of Chifley, this beautifully maintained two-bedroom townhouse offers a comfortable and convenient lifestyle just moments from Woden Town Centre.

Picture this you are relaxing in your sun-drenched home that features a spacious single-level layout with living space immediately as you walk in, flowing towards the kitchen.

Moving further into the home you will see two well laid out bedrooms, a separate bathroom with both a shower and a bathtub, a separate toilet and a laundry with external access to the rear courtyard for added practicality.

Enjoy seamless indoor-outdoor living with private front and rear courtyards, perfect for entertaining or quiet relaxation. Complimented with easy care plants and high walls throughout for that added privacy.

The property also boasts an oversized single garage with internal access, providing secure parking and additional storage space.

Being in Chifley you are spoilt for choice with popular shops, cafes,

FOR SALE
Auction

AGENTS

Harry Enright
0408 740 453
harryenright@ljhbelconnen.com.au

AGENCY

LJ Hooker Belconnen
(02) 6251 1477

All information contained therein is gathered from relevant third parties sources. We cannot guarantee or give any warranty about the information provided. Interested parties must rely solely on their own enquiries.



parks and playground for you to explore and enjoy.

Key Features:

- Single-level design, ideal for all ages
- Timber flooring in the living spaces
- 2 well-appointed bedrooms both with built in wardrobes
- Bathroom with both shower and bathtub
- Separate toilet and laundry
- Oversized single garage with internal access
- " Private front and rear courtyards with easy care plants
- " Located a short stroll from Charteris Crescent Playground and the popular café A Bite to Eat
- Public transport amenities on your doorstep

- Land Size: 233sqm
- Property Size: 108sqm | Living Size: 85sqm | Garage Size: 23sqm

Whether you're downsizing, investing, or entering the market, this private and low maintenance home ticks all the right boxes in one of Canberra's most desirable locations.

Don't miss this rare opportunity in Chifley - inspect today!

Disclaimer:

All information contained herein is gathered from external sources we consider to be reliable. However, we cannot guarantee or give any warranty about the information provided. Interested parties must solely rely on their own enquiries and satisfy themselves in all respects.

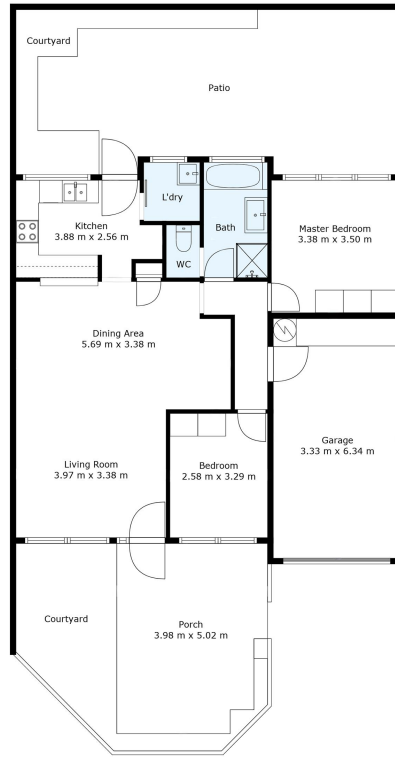
MORE DETAILS

Property ID	HP0GQF8H
Property Type	Townhouse
House Size	108 m2
Land Area	233 m2
EER	3.5
Including	Air Conditioning Courtyard Floorboards Built-in-Robes Secure Parking Fully Fenced Remote Garage

Harry Enright 0408 740 453
Sales Agent | harryenright@ljhbelconnen.com.au

LJ Hooker Belconnen (02) 6251 1477
Shop 9, 21 Benjamin Way, BELCONNEN ACT 2617
belconnen.ljhooker.com.au | belconnen@ljhbelconnen.com.au





7/48 Charteris Crescent, Chifley

Disclaimer: Plans are indicative only and should be checked by the prospective purchaser. Plans shown are for presentation purposes and are not part of any legal document. All measurements and figures are approximate. The information herein is gathered from sources we believe to be reliable.