



Chermside West, 20 Mayled Street

Premium north facing 663sqm House Block or Serious Renovator!

The perfect RENOVATOR or NEW HOME SITE! Positioned on a beautifully quiet street within short walking distance of parks, Craigslea and Aspley primary and high schools, City Express bus, shops and hospitals, this property offers an exceptional location and incredible opportunity! The elevated 663m2sqm block offers the perfect site for your new dream home, OR an amazing RENOVATION opportunity rarely seen in this area.

There is incredible scope to renovate the home and transform it into your dream home, or simply demolish and build your new home —the choice is yours! But please make no mistake —this project is ONLY for SERIOUS renovators or those happy to do plenty of work! It will require more than just paint and carpet...

The existing split level brick and tile home would have been constructed in the 1960's and provides a practical and very functional floorplan which includes 3 bedrooms, 1 bathroom,



Disclaimer: All information contained therein is gathered from relevant third parties sources. We cannot guarantee or give any warranty about the information provided. Interested parties must rely solely on their own enquiries.

3

1

2

For Sale
For Sale Now

View
ljhooker.com.au/38UXF1R

Contact
Amanda Waters
0402 109 955
awaters@ljhooker.com.au

LJ Hooker Aspley | Chermside
(07) 3263 6022

spacious living and dining, and kitchen. There is also a separate internal laundry and a double garage with internal access.

This lot has a wide 20.1 metre frontage and a depth of 32.7 metres approximately.

Make no mistake, this is an incredibly appealing position for your next home or investment. Chermside West is one of the Northside's hottest suburbs. The location is approximately 12km from the Brisbane CBD and provides easy access to the Sunshine and Gold Coast motorways and Brisbane Airport. Situated within a sought after and central position with great public transport options, walking distance to parkland, Prince Charles and St Vincent's Hospitals, quality schools, child care centres, and the extended Westfield Chermside shopping, dining and entertainment precinct, there really is so much to love here. Buyers seeking a rare and affordable opportunity should view this rough diamond!

Offering an incredible block of land or renovation opportunity at an affordable price, this is an opportunity not to be missed. For further information please contact AMANDA WATERS.

Quick Facts:

Size: 663sqm

Frontage: 20.1 metres approximately

Depth: 32.7 metres approximately

School Catchments: Aspley State School and Craigslea State High School

More About this Property

Property ID	38UXF1R
Property Type	House
Land Area	663 m ²

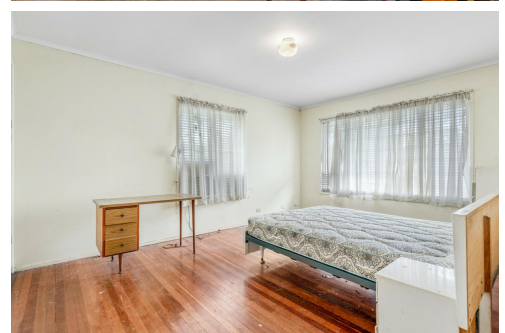
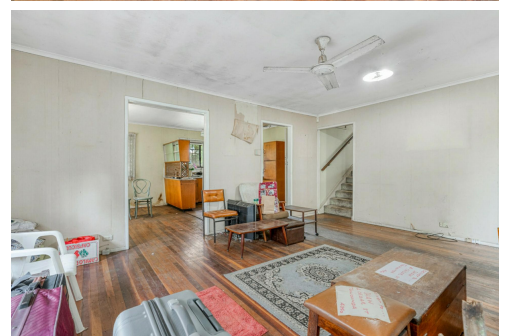
Amanda Waters 0402 109 955

Principal and Licensed Real Estate Agent | awaters@ljhooker.com.au

LJ Hooker Aspley | Chermside (07) 3263 6022

1359 Gympie Road, ASPLEY QLD 4034

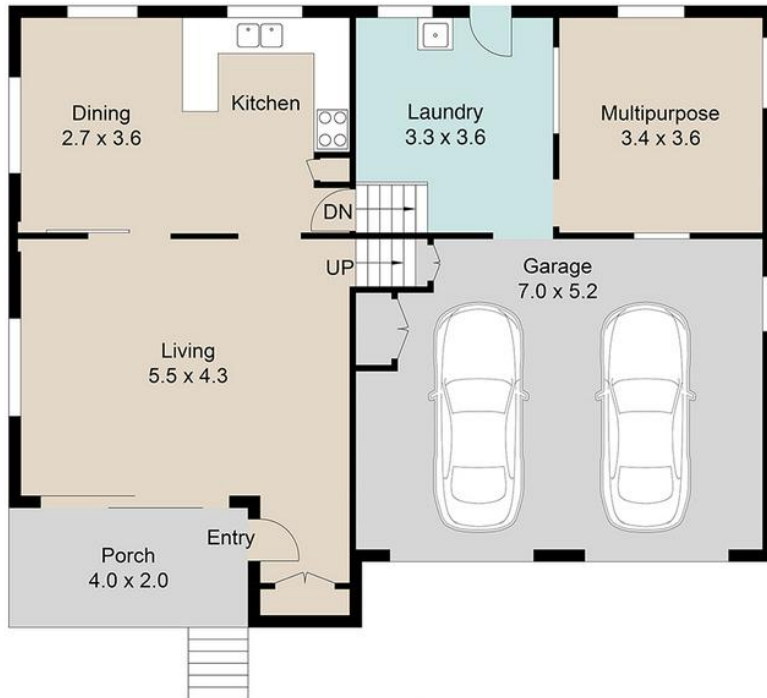
aspley@ljhooker.com.au | aspley@ljhooker.com.au



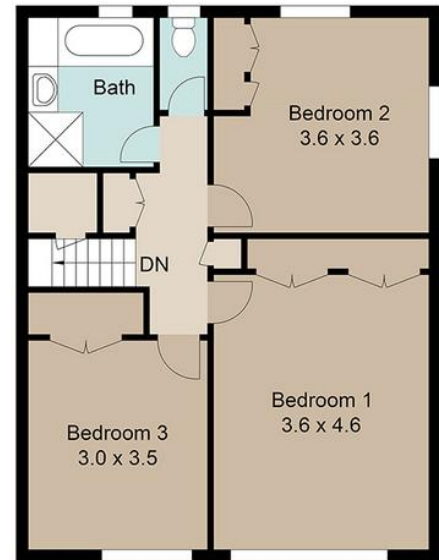
Disclaimer: All information contained therein is gathered from relevant third parties sources. We cannot guarantee or give any warranty about the information provided. Interested parties must rely solely on their own enquiries.

**LJ Hooker Aspley | Chermside
(07) 3263 6022**

20 Mayled Street



Ground Level



Upper Level

Internal 131 m² | External 43 m² | Total 174 m²

Floor plans are intended to give a general indication of the proposed layout only. All images and dimensions are not intended to form part any contract or warranty.

