

Cheltenham, 26 Lavender Avenue

Remarkable Modern Living in Central Park Estate,
Cheltenham

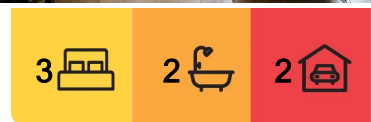
Discover the perfect blend of modern style and convenience in this elegant 3-bedroom, 2-bathroom townhouse, complete with a secure lock-up garage in the heart of Central Park Estate.

Step into a stunning open-plan ground floor, featuring sleek floorboards throughout, and discover a contemporary kitchen equipped with stainless steel appliances and a chic island bench. The kitchen flows effortlessly into the meals and living area, creating a seamless space for entertaining and everyday living.

Glass doors open to a private backyard oasis, complete with a deck and pergola-perfect for alfresco dining, outdoor relaxation, or weekend barbecues.

An original laundry plus an extra facility in the garage adds flexibility and convenience to suit your lifestyle.

Upstairs, you'll find three generously sized bedrooms. The master bedroom serves as a luxurious retreat with its private balcony, walk-in robe, and stylish ensuite. The other two



For Sale
\$869,000-\$899,000

View
By Appointment

Contact
Ally Song
0403 221 620
Allys.cityresmelbourne@ljhooker.com.au



LJ Hooker City Residential
(03) 9600 2166

Disclaimer: All information contained therein is gathered from relevant third parties sources. We cannot guarantee or give any warranty about the information provided. Interested parties must rely solely on their own enquiries.

bedrooms feature built-in robes and share a spacious family bathroom.

Ideally located near Le Page Primary and Cheltenham Secondary schools, with excellent public transport options nearby, this home also offers easy access to premier shopping and dining at Westfield Southland and DFO Moorabbin.

Don't miss this exceptional opportunity, call Ally to discover this exciting home today!

More About this Property

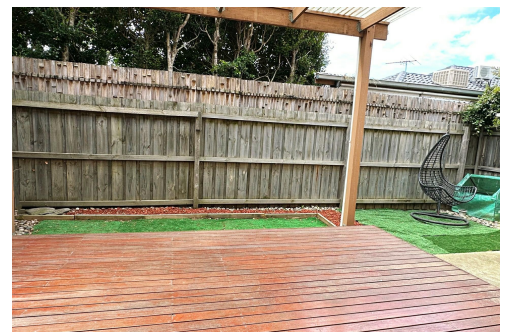
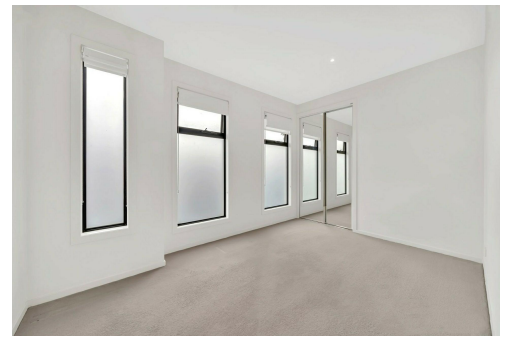
Property ID	NB6HC2
Property Type	Townhouse
Including	Ensuite Air Conditioning Built-in-Robes Close to Schools Close to Transport

Ally Song 0403 221 620

Manager | Allys.cityresmelbourne@ljhooker.com.au

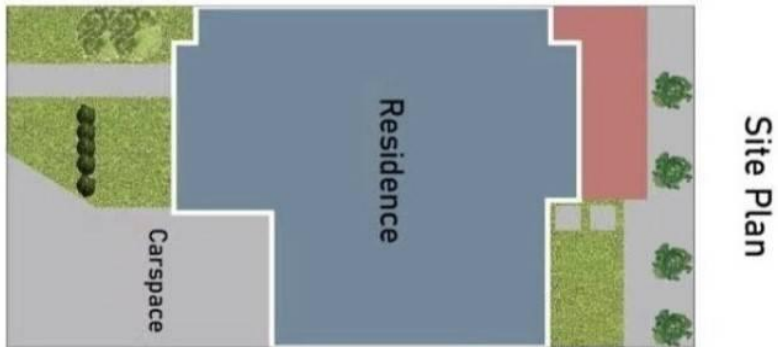
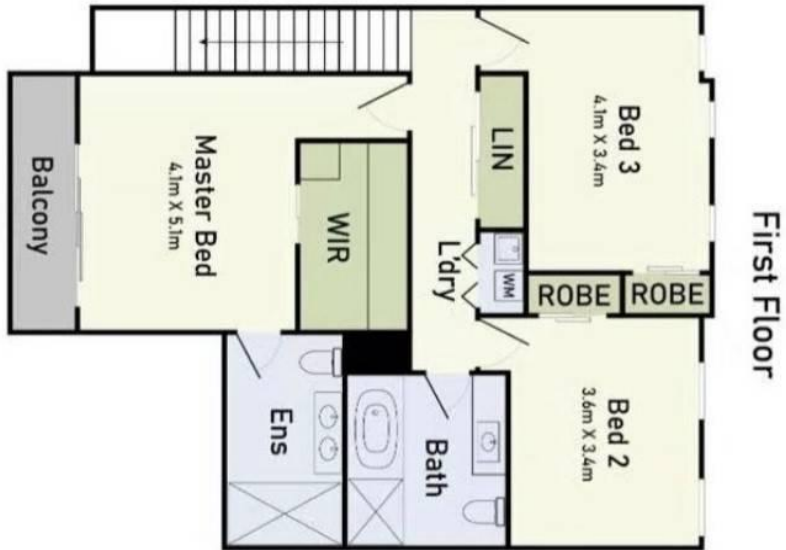
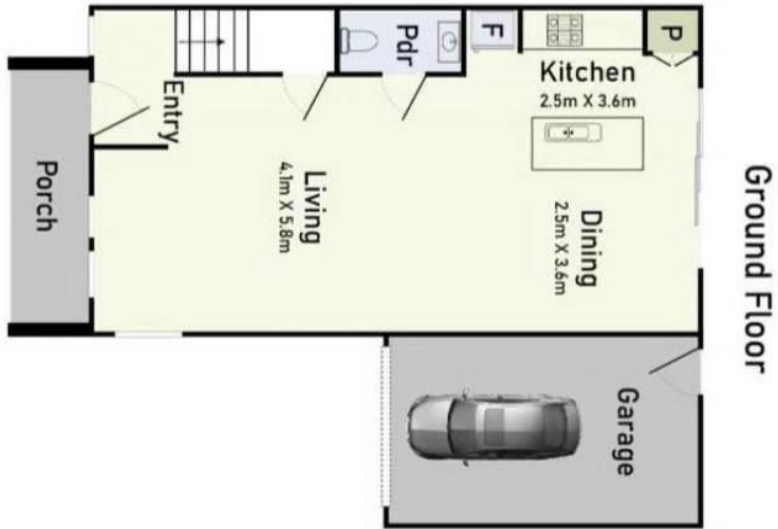
LJ Hooker City Residential (03) 9600 2166

Upper Ground Floor, 439-445 Lonsdale St, MELBOURNE VIC 3000
cityresmelbourne.ljhooker.com.au | cityresmelbourne@ljhooker.com.au



LJ Hooker City Residential
(03) 9600 2166

Disclaimer: All information contained therein is gathered from relevant third parties sources. We cannot guarantee or give any warranty about the information provided. Interested parties must rely solely on their own enquiries.



Central Park Estate
 Cheltenham
 LJ Hooker City Residential Melbourne



LJ Hooker City Residential
 (03) 9600 2166

Disclaimer: All information contained therein is gathered from relevant third parties sources. We cannot guarantee or give any warranty about the information provided. Interested parties must rely solely on their own enquiries.