

65 Perry Drive, Chapman

Auction Cancelled - Contact Agent

Perfectly positioned in a convenient Chapman location, this expansive family home offers exceptional space, flexibility, and lifestyle appeal. Designed over two levels, it's ideal for large or extended families seeking multiple living areas and room to grow.

Upstairs, you'll find four generous bedrooms, the main with ensuite, plus a selection of light-filled living zones including lounge, dining, meals, and a covered area overlooking the pool. The kitchen is sure to impress with quality appliances, sleek finishes, and ample storage - the perfect hub for family gatherings. The kitchen is functional and spacious, large enough to cook up a storm with generous storage and quality finishes, making it the perfect hub for family life.

Downstairs, internal access leads to a versatile lower level featuring two additional bedrooms, a bathroom, laundry, and plenty of open space. Whether you're after a games room, teenage retreat, home office, extra rental income, or simply more storage, the options are truly limitless.

Outdoors is where this home really shines. The backyard is a private oasis, almost like your own mini theme park. With a fully fenced

6 4 4

FOR SALE
Forthcoming Auction

VIEW
By Appointment

AGENTS
Pauline Jenkins
pauline.jenkins@ljhwodenweston.com.au

AGENCY
LJ Hooker Woden | Weston
(02) 6288 8888

All information contained therein is gathered from relevant third parties sources.
We cannot guarantee or give any warranty about the information provided.
Interested parties must rely solely on their own enquiries.



inground pool and an array of unique spaces to relax and unwind, it's a resort-style escape from everyday living.

A double garage, side parking for a boat or trailer, ducted heating, and proximity to local shops, schools, and transport complete this exceptional family package.

Key Features:

- Six bedrooms, three bathrooms across two spacious levels
- Large kitchen with ample storage
- Multiple living areas including lounge, dining, meals, and a covered outdoor area
- Flexible lower level, ideal for games room, teenage retreat, or dual living
- Resort-inspired backyard with pool and entertaining spaces
- Double garage plus side parking for boat/trailer
- Ducted heating and generous storage throughout
- Stone's throw away to shops, schools, and bus stops

Residence - 251 sqm (includes lower level granny flat - 63.5 sqm)

Garage - 41.5 sqm

Carport - 54 sqm

Block size - 825 sqm

Built :1974

EER - 1

MORE DETAILS

Property ID	JJAH5W
Property Type	House
House Size	251 m2
Land Area	826 m2
EER	1

Pauline Jenkins

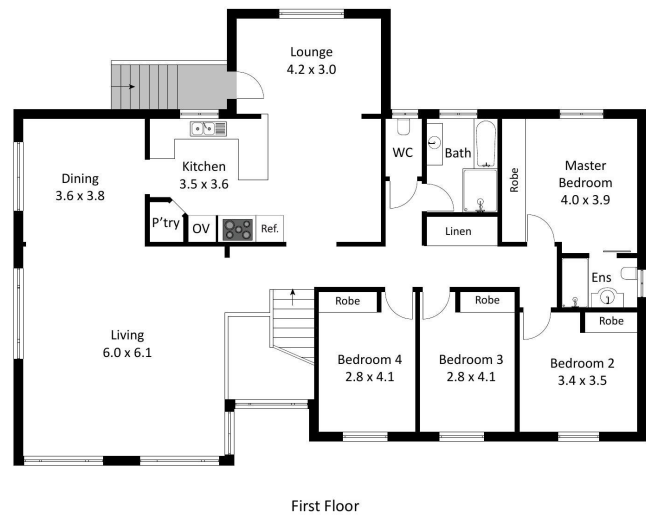
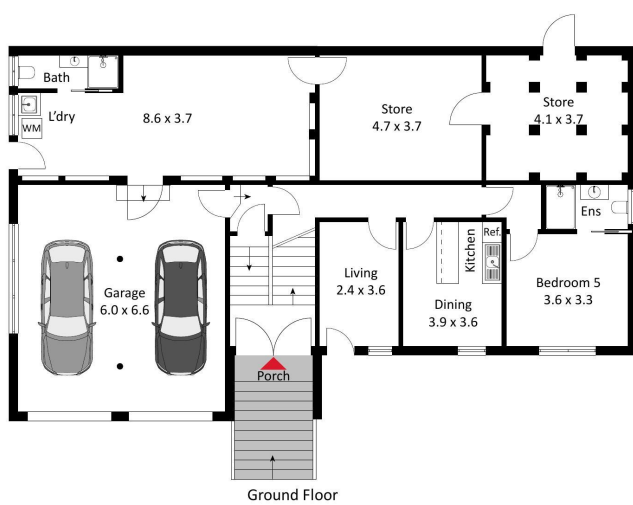
Licensed Agent ACT/NSW | pauline.jenkins@ljhwoodenweston.com.au

LJ Hooker Woden | Weston (02) 6288 8888

23 Brierly Street, WESTON CREEK ACT 2611

westoncreek.ljhooker.com.au | reception@ljhwoodenweston.com.au





The floor plan is not to scale; measurements are indicative and in metres. Exterior elements are not in position. Plans should not be relied on. Interested parties should make and rely on their own enquiries.

65 Perry Drive, Chapman