



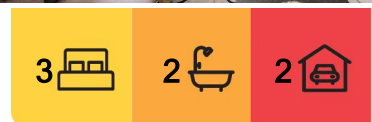
Chadstone, 2/5 Tandara Court

Experience opulent, hassle-free living at 2/5 TANDARA COURT, CHADSTONE. Inspection by appointment

Tucked away via a private laneway, this townhouse boasts an elevated level of privacy, with its own frontage, exclusive driveway, and no shared common land. Enjoy a chic, lock-and-leave lifestyle within walking distance of Batesford Reserve, Holmesglen Institute, Holmesglen train station, and local shops.

The home's striking design elements embody the essence of modern sophistication, complemented by high-quality finishes that cocoon the interior in a luxurious ambiance. Upon entry, the contemporary allure of the vast open-plan living domain is enhanced by timber floors, seamlessly flowing into a low-maintenance courtyard with a sunlit entertaining deck.

Inside, the gourmet kitchen is a culinary haven featuring top-notch stainless steel appliances, 40mm stone benchtops, and the convenience of a stainless steel dishwasher,



For Sale
\$980,000 - \$1,070,000

View
By Appointment

Contact
Yannie Hou
0416 868 512
yhou.rowville@ljhooker.com.au



LJ Hooker City Residential
(03) 9600 2166

Disclaimer: All information contained therein is gathered from relevant third parties sources. We cannot guarantee or give any warranty about the information provided. Interested parties must rely solely on their own enquiries.

ensuring effortless post-meal clean-up.

A deluxe master bedroom, complete with an ensuite and walk-in robe, beckons downsizing buyers, while two generously sized, robed bedrooms share the privacy of the upstairs layout with a glamorous main bathroom.

This luxurious low-maintenance townhouse is adorned with high ceilings, chic plantation shutters, abundant natural light, split-system heating/cooling, carpeted bedrooms, and a remote single garage with courtyard access. Immerse yourself in the epitome of stylish, carefree living.

More About this Property

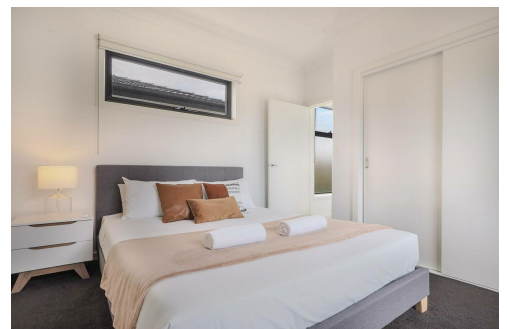
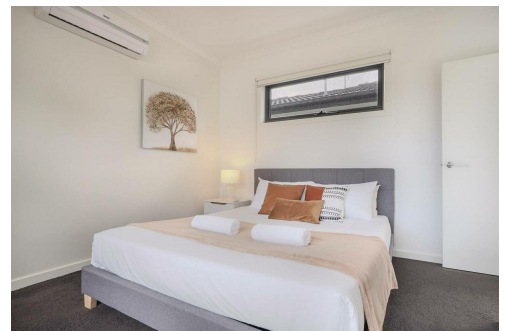
Property ID	MPAHC2
Property Type	Townhouse
Land Area	198 m ²

Yannie Hou 0416 868 512

Senior Property Consultant | yhou.rowville@ljhooker.com.au

LJ Hooker City Residential (03) 9600 2166

Upper Ground Floor, 439-445 Lonsdale St, MELBOURNE VIC 3000
cityresmelbourne.ljhooker.com.au | cityresmelbourne@ljhooker.com.au



Disclaimer: All information contained therein is gathered from relevant third parties sources. We cannot guarantee or give any warranty about the information provided. Interested parties must rely solely on their own enquiries.

LJ Hooker City Residential
(03) 9600 2166



The site plan and floor plan are not to scale; measurements are indicative and in metres. Bushes and trees are placed for illustration purposes. Plans should not be relied on. Interested parties should make and rely on their own enquiries.