

Casula, 6/45 Pine Road

Quality Villa in Prime Location!

6/45 PINE RD CASULA

Enjoy the convenience and comfort of this two-bedroom plus study villa bathed in natural light, located within walking distance to all major amenities.

This is one of the biggest villas in this complex, located in a private area of the complex for more privacy. Has exclusive open common area located right in front of the villa.

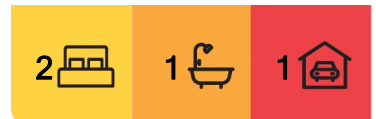
Great opportunity for first time home buyers or families looking for a 3 bedroom place. Complex has low strata rates and its within walking distance to Casula Mall, shops, schools and parks.

Pets are allowed with strata approval



Disclaimer: All information contained therein is gathered from relevant third parties sources. We cannot guarantee or give any warranty about the information provided. Interested parties must rely solely on their own enquiries.

SOLD



For Sale
Please Call

View
ljhooker.com.au/Z93GRH

Contact
Ilice Dimeski
0424 198 337
ildimeski.casula@ljhooker.com.au

LJ Hooker Casula
(02) 9601 8333

Other features include ducted air-condition, down-lights, large shed, Pergola for entertaining, great backyard with easy maintenance and single carport.

More About this Property

Property ID	Z93GRH
Property Type	Villa
Land Area	196 m ²
Including	Ducted Cooling Built-in-Robes

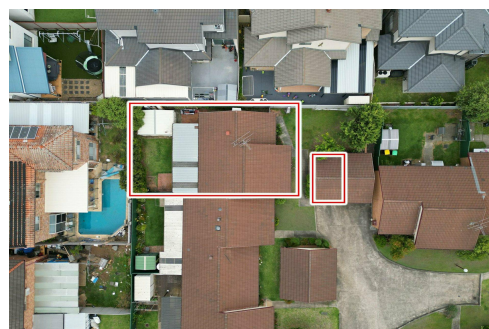
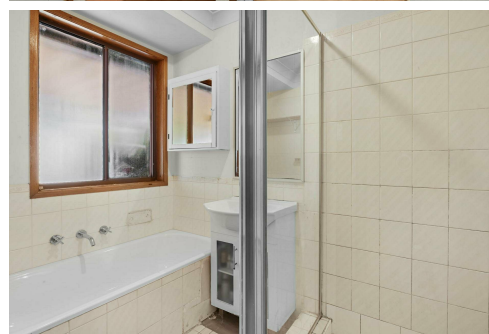
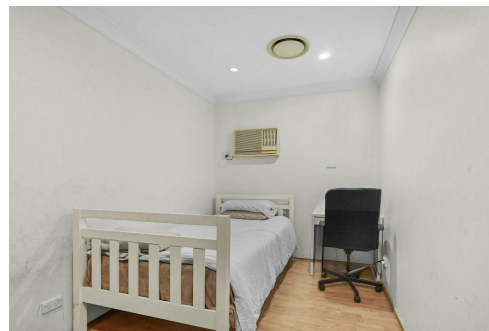
Ilce Dimeski 0424 198 337

Principal | ildimeski.casula@ljhooker.com.au

LJ Hooker Casula (02) 9601 8333

62 Marsh Parade, CASULA NSW 2170

casula.ljhooker.com.au | casula@ljhooker.com.au



LJ Hooker Casula
(02) 9601 8333

Disclaimer: All information contained therein is gathered from relevant third parties sources. We cannot guarantee or give any warranty about the information provided. Interested parties must rely solely on their own enquiries.



6/45 Pine Road, Casula

Disclaimer : Dimensions are approximate and should only be used as a guide. All information contained herein is gathered from sources we believe to be reliable. However, we cannot guarantee its accuracy and interested parties should rely on their own enquiries.

