



17A Gilmore Road, Casula

Modern Family Living in the Heart of Casula | Buyers Guide \$1,000,000

Positioned in a peaceful and family-friendly pocket of Casula, this beautifully presented brick residence offers the perfect balance of space, comfort, and low-maintenance living. Designed with practicality in mind, the home delivers generous proportions throughout without the burden of high upkeep-making it ideal for growing families, first home buyers, or savvy investors seeking a move-in ready opportunity.


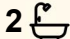
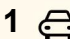
Offering a functional floorplan with multiple living zones, this home is tailored for modern family living and effortless entertaining. Whether you're relaxing indoors or enjoying the easy-care outdoor setting, every aspect of this property has been thoughtfully designed for comfort and convenience.

Set in a sought-after location close to local schools, shops, parks, and transport, this is an outstanding opportunity to secure a quality home with long-term appeal.

Features include:

- Four generous bedrooms, all complete with built-in wardrobes

All information contained therein is gathered from relevant third parties sources. We cannot guarantee or give any warranty about the information provided. Interested parties must rely solely on their own enquiries.

4  2  1 

FOR SALE

Auction if not Sold Prior

VIEW

Sat 23rd May @ 10:45AM - 11:15AM

AGENTS

David Loaney

0412 257 476

David.loaney@ljhooker.com.au

AGENCY

LJ Hooker Padstow

(02) 9771 1177

 **LJ Hooker**

- Spacious master bedroom featuring a private ensuite
- Two separate living areas providing flexible family living and entertaining options
- Well-appointed main bathroom servicing the additional bedrooms
- Functional kitchen with gas cooking and ample storage
- Gas hot water system and bayonet heating point
- Split system air-conditioning for year-round comfort
- Secure garage with internal access for added convenience
- Solid brick construction offering durability and timeless appeal
- Low-maintenance yard designed for easy living with minimal upkeep
- Ideal opportunity for families, downsizers, or investors alike

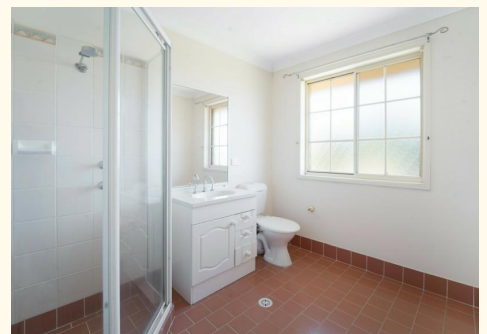
Disclaimer: All information contained herein is gathered from sources we believe reliable. We have no reason to doubt its accuracy; however, we cannot guarantee it. All interested parties should make and rely upon their own enquiries. Images may include virtual furniture and furnishings for illustrative purposes only

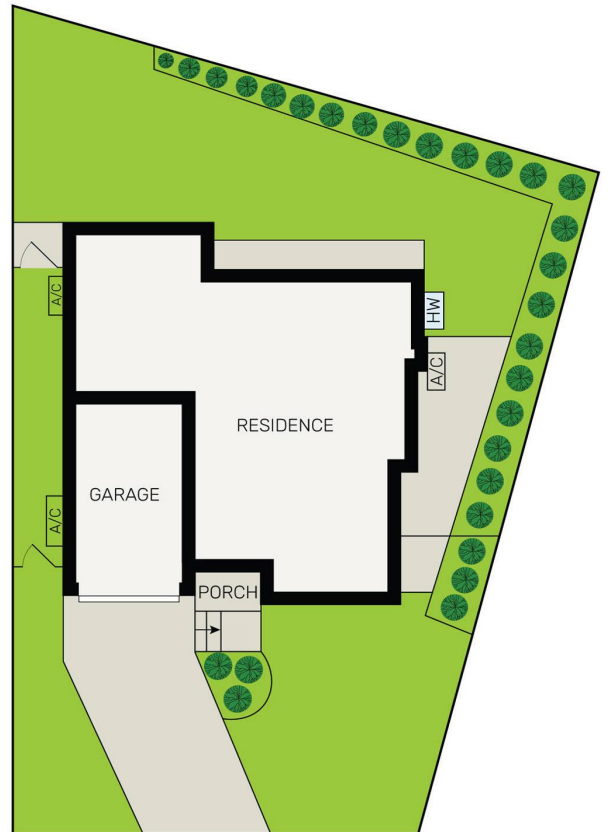
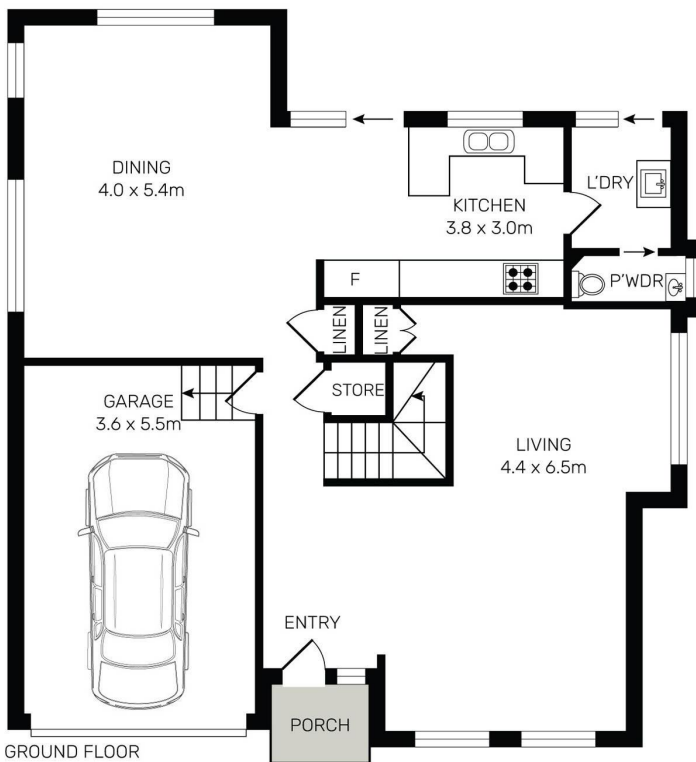
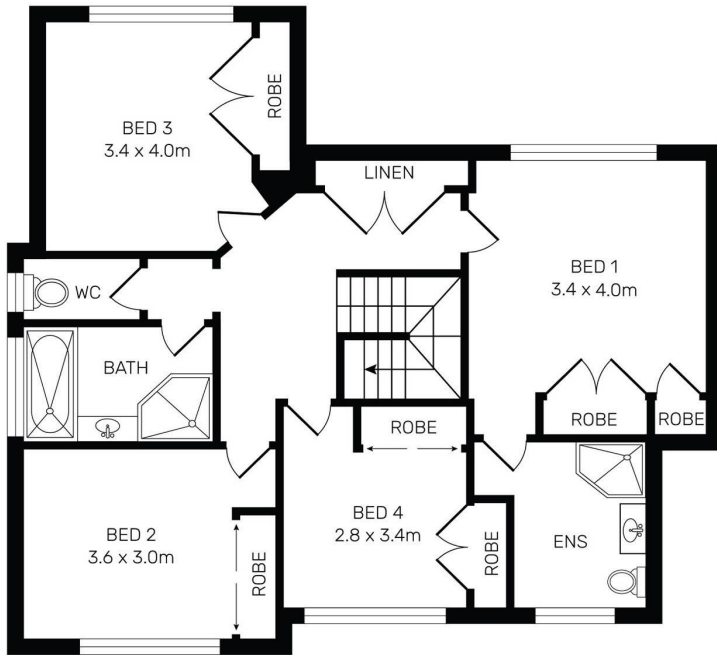
MORE DETAILS

Property ID	1F0GFAE
Property Type	House
Land Area	277 m2

David Looney 0412 257 476
Sales Agent | David.looney@ljhooker.com.au

LJ Hooker Padstow (02) 9771 1177
2 Padstow Parade, PADSTOW NSW 2211
padstow.ljhooker.com.au | reception.padstow@ljhooker.com.au





LJ Hooker
Padstow



17A Gilmore Road, Casula

All information contained herein is gathered from all sources we believe to be reliable. However we cannot guarantee its accuracy and interested parties should rely on their own enquiries.

(02) 9771 1177

All information contained therein is gathered from relevant third parties sources. We cannot guarantee or give any warranty about the information provided. Interested parties must rely solely on their own enquiries.

LJ Hooker