

10 Harrison Street, Cashmere

## A PRIVATE FAMILY RETREAT MADE FOR LUXURY LIVING

10 Harrison Street, Cashmere —Greenwoods Estate

Tucked away in the exclusive Greenwoods Estate, this expansive family sanctuary delivers the perfect blend of luxury, lifestyle, and laid-back Cashmere calm. Positioned on a generous 1,250m<sup>2</sup> block and designed with effortless family living in mind, this is a home where space, comfort, and functionality come together in the most beautiful way.

From the moment you arrive, the home's elevated presence and serene outlook set the tone. Every detail has been thoughtfully crafted - from the multiple living zones to the dual retreats - creating a haven that caters to multigenerational living, growing families, and those who love to entertain.

Step inside and you're greeted by light-filled, open-plan living anchored by a feature electric fireplace and framed by leafy views. The entertainer's kitchen is the heart of the home, complete with a butler's pantry, 6-burner stove, abundant storage, and seamless connection to the outdoor areas.

5 🏠 3 🚗 3 🚗

**FOR SALE**  
Contact Agent

### AGENTS

Jason Wagner  
0457 704 071  
jwagner.albanycreek@ljhooker.com.au

Wayne Cornell  
0410 405 031  
wcornell.albanycreek@ljhooker.com.au

### AGENCY

LJ Hooker Albany Creek | Warner  
(07) 3264 9000

All information contained therein is gathered from relevant third parties sources.  
We cannot guarantee or give any warranty about the information provided.  
Interested parties must rely solely on their own enquiries.



With a dedicated media room, a luxurious parents' retreat, a separate guest retreat, plus an additional three bedrooms, this home offers remarkable flexibility. Whether you're hosting gatherings, unwinding in the spa, or simply enjoying the tranquility of the estate, this is a property that elevates everyday living!

Features you'll love:

- 5 spacious bedrooms including a private guest retreat
- 3 beautifully appointed bathrooms (including ensuite with his & hers vanity)
- Luxe parents' retreat offering space, privacy and a peaceful escape
- " Separate guest retreat —ideal for extended family or visitors
- Media room for cinematic nights in
- Open-plan living with a stunning electric fireplace
- Gourmet kitchen with butler's pantry + 6-burner stove
- 2.7m high ceilings enhancing space, airflow and natural light
- Ducted air-conditioning + ceiling fans throughout for year-round comfort
- Family bathroom with separate shower and bathtub
- Resort-style pool perfect for summer afternoons and weekend entertaining
- Spa for relaxation and unwinding
- Outdoor covered entertaining area seamlessly connected to the home
- Outdoor kitchen for effortless alfresco dining and hosting
- Sunkissed deck ideal for lounging, entertaining and soaking up the tranquillity
- Triple lock-up garage with additional space for a trailer or boat
- 6kW solar power system for efficiency and reduced energy costs
- Thoughtful landscaping enhancing privacy and tranquillity
- " Multiple living zones perfect for large families
- " Large 1,250m<sup>2</sup> block in the highly sought-after Greenwoods Estate

#### The Lifestyle & Location

Greenwoods Estate is known for its peaceful environment, spacious blocks, and family-friendly community feel. Surrounded by nature yet moments from everyday convenience, Cashmere offers the best of both worlds - a countryside calm with access to Albany Creek, Eatons Hill and Warner shopping precincts, cafés, parks, and some of the area's most respected schools.

You'll love coming home to this quiet, prestigious enclave where privacy, space and community spirit are part of the everyday rhythm.

#### Location Highlights:

- " Nestled within the prestigious Greenwoods Estate on a spacious 1,250m<sup>2</sup> block
- Surrounded by peaceful bushland, walking tracks and established family homes
- " 5 mins to Eatons Hill Village —Woolworths, cafés, restaurants, medical & lifestyle amenities
- " 7 mins to Albany Creek Marketplace —Coles, retail, gyms & specialty stores
- " 10 mins to Warner MarketPlace —shops, dining, services & everyday essentials
- Easy access to the Bray Park and Strathpine train stations for a smooth commute to the CBD
- Close to highly regarded schools including Genesis Christian College, St Paul's School, and Albany Creek State High
- Short drive to popular recreation spots including Eatons Hill Hotel, Bunya Reserve and local parks
- A quiet, community-focused estate known for its privacy, space, and welcoming neighbourhood vibe

#### Disclaimer:

"Information contained on any marketing material, website or other portal should not be relied upon. You should make your own enquiries and seek your own independent advice with respect to any property advertised or the information about the property."

"LJ Hooker Property Connections also offer a property management service. If you're considering renting your property, are looking to buy or would like a free review of your current portfolio, please call our main office on (07) 3264 9000."

## MORE DETAILS

Property ID	1U2AF1H
Property Type	House
Land Area	1250 m2
Including	Study
	Air Conditioning
	Toilets (3)
	Pool
	Deck
	Dishwasher
	Fully Fenced
	Solar Panels

**Jason Wagner 0457 704 071**

Sales Consultant | [jwagner.albanycreek@ljhooker.com.au](mailto:jwagner.albanycreek@ljhooker.com.au)

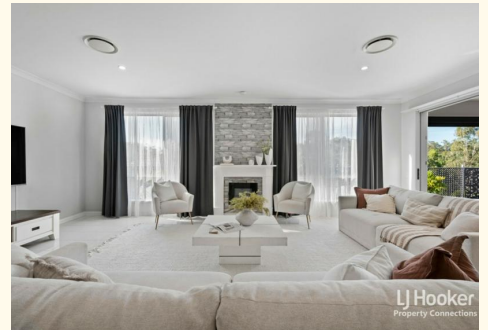
**Wayne Cornell 0410 405 031**

Sales Consultant | [wcornell.albanycreek@ljhooker.com.au](mailto:wcornell.albanycreek@ljhooker.com.au)

**LJ Hooker Albany Creek | Warner (07) 3264 9000**

699 Albany Creek Road, ALBANY CREEK QLD 4035

[albanycreek.ljhooker.com.au](http://albanycreek.ljhooker.com.au) | [albanycreek@ljhooker.com.au](mailto:albanycreek@ljhooker.com.au)





10 Harrison Street, **Cashmere**

All dimensions are approximate; they may be subject to errors and inaccuracies, and no liability will be accepted. Plans are shown for marketing purpose only.

5 3 3 3 359m<sup>2</sup>

**LJ Hooker**  
Property Connections