



26 Loveday Crescent, Casey

Freshly Renovated Separately Titled Living


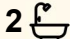
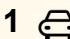
Positioned within one of Canberra's growing lifestyle suburbs, this thoughtfully renovated home combines modern comfort, practical living, and low maintenance ease. Surrounded by parks, walking trails, schools, shops, and convenient connections into the wider Gungahlin region, the location offers a relaxed residential setting without compromising everyday convenience.

Designed across a functional floorplan, the home balances open shared spaces. Timber flooring, soft neutral tones, and abundant natural light create interiors that feel warm, calm, and inviting.

Open plan living and dining areas encourage effortless day to day living while still allowing space to unwind or entertain comfortably.

The renovated kitchen anchors the home with a large island bench, sleek cabinetry, generous storage, quality appliances, and a statement tiled splashback.

Overlooking the living and dining spaces, it remains central to the home's connection and functionality, while expansive glazing and sliding doors draw natural light throughout the interiors.

4  2  1 

FOR SALE

Offer over \$799,000

VIEW

Tue 19th May @ 5:00PM - 5:30PM

AGENTS

Virginia Stoker

0434 610 698

virginia.stoker@ljhooker.com.au

AGENCY

LJ Hooker Gungahlin

(02) 6213 3999

All information contained therein is gathered from relevant third parties sources. We cannot guarantee or give any warranty about the information provided. Interested parties must rely solely on their own enquiries.

 **LJ Hooker**

Sliding doors extend seamlessly onto a covered alfresco area designed for year round enjoyment. Framed by private fencing and low maintenance landscaping, the outdoor setting offers an easy balance of entertaining space and relaxed everyday living.

The bedrooms continue the home's calm and cohesive aesthetic, offering comfortable accommodation and soft natural light throughout. Thoughtfully designed with comfort and practicality in mind, the home delivers an easy modern lifestyle in a highly convenient location.

AT A GLANCE

- Freshly painted
- New carpet, new hybrid flooring
- Renovated kitchen with island bench and tiled splashback
- Renovated bathroom and ensuite
- Open plan living and dining area filled with natural light
- Quality appliances and generous kitchen storage
- Seamless indoor outdoor connection to covered alfresco area
- Low maintenance landscaped gardens with private fencing
- Well considered floorplan balancing shared and private spaces
- Comfortable bedrooms with peaceful natural light
- Reverse cycle heating and cooling
- Walking distance to Casey Market Town
- Convenient location close to parks, schools, shops, and walking trails

THE NUMBERS

- Land size: 150 m2
- Total living: 123.8 m2
- Garage: 19.37 m2
- EER: 5
- Built: 2009
- Rental appraisal: TBA
- Rates: \$2,860 pa approx.
- Land Tax: \$4,808 pa approx. (if rented out)
- UV (2025): \$395,000 (2025)

MORE DETAILS

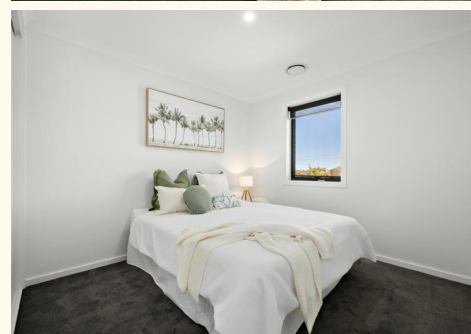
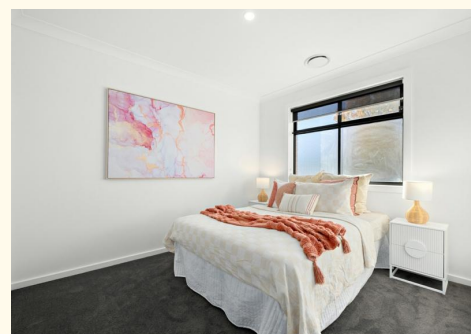
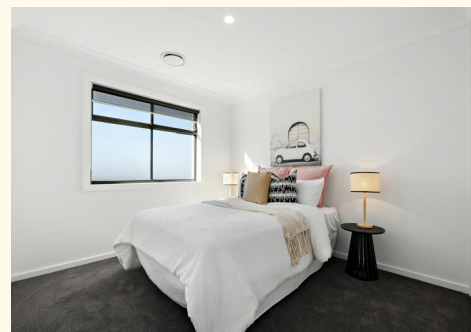
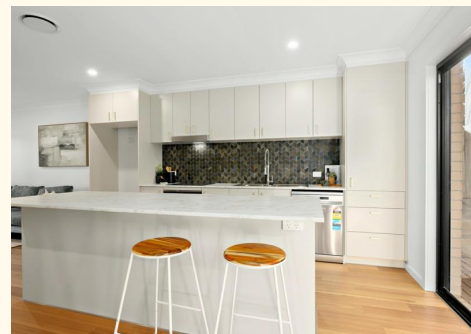
Property ID	36UPGCY
Property Type	Townhouse
House Size	132 m2
Land Area	150 m2
EER	5

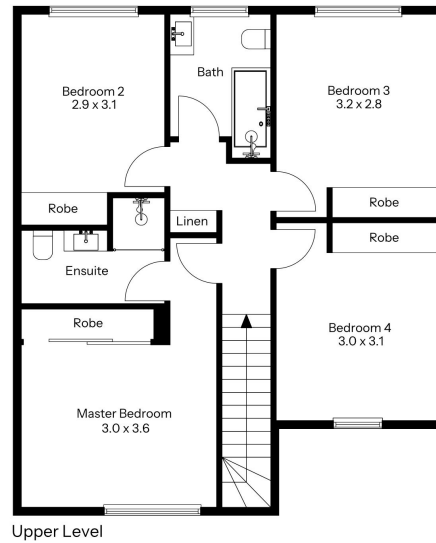
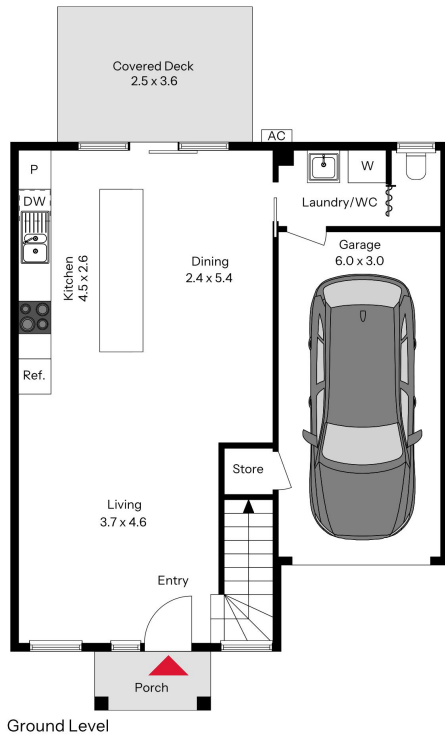
Virginia Stoker 0434 610 698

Licensed Agent ACT/NSW | virginia.stoker@ljhooker.com.au

LJ Hooker Gungahlin (02) 6213 3999

Suite 2C, Level 1, Gungahlin Village, 46-50 Hibberson Street,
GUNG AHLIN ACT 2912
gungahlin.ljhooker.com.au | gungahlin@ljhooker.com.au





The floor plan is not to scale; measurements are indicative and in metres. Exterior elements are not in position. Plans should not be relied on. Interested parties should make and rely on their own enquiries.

26 Loveday Crescent, Casey



All information contained therein is gathered from relevant third parties sources.
We cannot guarantee or give any warranty about the information provided.
Interested parties must rely solely on their own enquiries.

