

## Carterton, 3920 State Highway 2

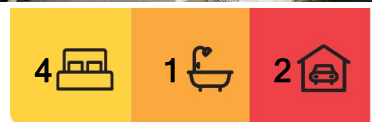
### MAKE THE FAIRY-TALE ACRE A REALITY!!

Just minutes from Masterton's CBD (and even closer to Solway's rail, schooling, fine dining, supermarket and more!!) this private wee lifestyle nestles on over 3/4 of an acre of land, offering a rare opportunity to make your acreage dream come true!!

This intriguing block includes a small paddock for your hobby farm critters, and outbuildings for vehicles, storage, and tinkering, while a tree-lined drive draws you from the road to the classic two-storied home, standing nobly before you.

The home features generous connecting living spaces, an abundance of natural light through character-full windows, a fairytale stairwell, three-to-four double bedrooms, two toilets, and secondary rooms to consider YOUR way.

The recorded floor area of 210 square metres offers an exciting opportunity to reconfigure and renovate the home to suit YOUR situation and taste, making the most of the appeal so



**For Sale**  
Enquiries Over \$585,000

**View**  
[l.jhooker.co.nz/Y9VGES](https://l.jhooker.co.nz/Y9VGES)

**Contact**  
**Karina Rosemergy**  
027 636 4154  
[krosemergy.masterton@l.jhooker.co.nz](mailto:krosemergy.masterton@l.jhooker.co.nz)



**Disclaimer:** All information contained therein is gathered from relevant third parties sources. We cannot guarantee or give any warranty about the information provided. Interested parties must rely solely on their own enquiries.

**LJ Hooker Masterton**  
**(06) 378 8666**  
McHattie Realty Ltd MREINZ



evident here: a chance to bring this proud home back into her glory with contemporary style, panache, and comfort.

But in the meantime, you'll appreciate the views, the space, proximity to amenities, your planning and design flair!

Outside, while current curtilage areas feature sweeping lawns, mature trees and sweet gardens, you may choose to develop these spaces with further landscaping and structural accents? Or add more self-sufficiency with an orchard, chooks, glass house, vege beds? Is this a family venture with country kids the focus? Or are you creating an experience for guests? A retreat? A live-in business scenario??

This outstanding 3483m2 (more or less) glorious piece of lifestyle joy is the potential that can make your fairytale dream come true. See the beauty, understand the objective, create the reality for you and your family.

Before someone else beats you to it. Our vendor has been here over 30 years, but is now relocating North.

To claim the foundation of your vision, please act quickly.

Call Karina today for more information, and your personal appointment to visit.

## More About this Property

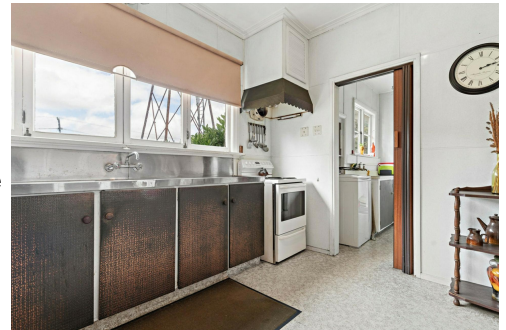
<b>Property ID</b>	Y9VGES
<b>Property Type</b>	Lifestyle
<b>House Size</b>	210 m <sup>2</sup>
<b>Land Area</b>	3483 m <sup>2</sup>
<b>Licensed Real Estate Agents (REAA2008)</b>	

### Karina Rosemergy 027 636 4154

Licensed Sales Specialist & Marketing Consultant |  
krosemergy.masterton@ljhooker.co.nz

### LJ Hooker Masterton (06) 378 8666

McHattie Realty Ltd MREINZ  
4 Renall Street, MASTERTON 5810  
masterton.ljhooker.co.nz | masterton@ljhooker.co.nz



**Disclaimer:** All information contained therein is gathered from relevant third parties sources. We cannot guarantee or give any warranty about the information provided. Interested parties must rely solely on their own enquiries.

**LJ Hooker Masterton**  
**(06) 378 8666**  
McHattie Realty Ltd MREINZ