



## Carrara, 5 Summit Crescent

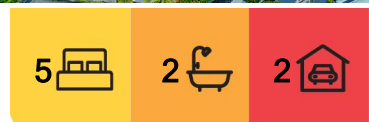
Spacious family home with panoramic views and dual living potential.

Set high on a generous 728m2 elevated block in one of Carrara's most sought-after streets, this impressive 5 bedroom, 2.5 bathroom home offers space, comfort and stunning north-east views stretching from Labrador to Mermaid.

Upstairs boasts four generous bedrooms, a spacious galley-style kitchen, large renovated laundry and a sprawling balcony perfect for soaking in the panoramic views. The centralised open plan living area is air-conditioned and designed for relaxed family living.

Downstairs features a 5th bedroom with its own toilet and vanity - ideal as a teenager's retreat, guest space or possible conversion to a dual-living setup.

Property features include:



**For Sale**  
Offers Over \$1,299,000

**View**  
[ljhooker.com.au/5GTQF41](http://ljhooker.com.au/5GTQF41)

**Contact**  
**Alexander Bally**  
0410 650 470  
[abally@ljhgc.com.au](mailto:abally@ljhgc.com.au)



**Disclaimer:** All information contained therein is gathered from relevant third parties sources. We cannot guarantee or give any warranty about the information provided. Interested parties must rely solely on their own enquiries.

**LJ Hooker Nerang**  
**(07) 5581 4422**



Large master bedroom with ensuite and walk in wardrobe  
 Total of 5 generous bedrooms, 2 with walk in wardrobes  
 Modernised bathrooms  
 3rd toilet/powder room downstairs  
 Centralised open plan living  
 Airconditioned throughout  
 Large renovated laundry  
 Modern hybrid flooring  
 Oversized double lock up garage  
 Lots of extra storage throughout  
 13 Kw Solar PV  
 Solid brick and tile home built 1989  
 Fully fenced for pets and kids to play safely

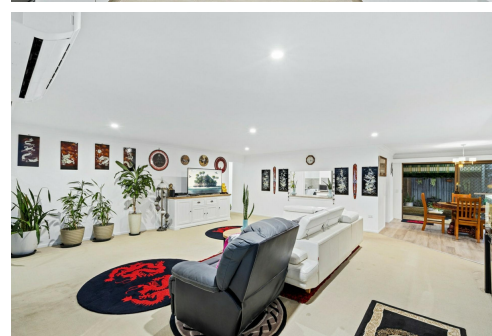
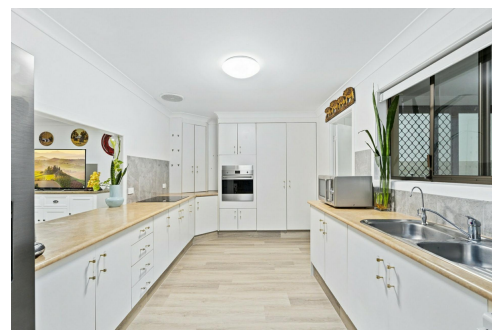
This is a rare opportunity to secure a versatile family home with room to grow in one of the Gold Coast's hidden gems. Opens start this Friday daily through to Monday. All offers will be presented the following day. Building and pest available on request.

## More About this Property

<b>Property ID</b>	5GTQF41
<b>Property Type</b>	House
<b>Land Area</b>	728 m2

**Alexander Bally 0410 650 470**  
 Sales Specialist | [abally@ljhgc.com.au](mailto:abally@ljhgc.com.au)

**LJ Hooker Nerang (07) 5581 4422**  
 2-4 New Street, NERANG QLD 4211  
[nerang.ljhooker.com.au](http://nerang.ljhooker.com.au) | [nerang@ljhgc.com.au](mailto:nerang@ljhgc.com.au)



**Disclaimer:** All information contained therein is gathered from relevant third parties sources. We cannot guarantee or give any warranty about the information provided. Interested parties must rely solely on their own enquiries.

**LJ Hooker Nerang**  
**(07) 5581 4422**



5 SUMMIT CRESCENT, CARRARA

5 2.5 2

Internal: 278m<sup>2</sup> | External: 73m<sup>2</sup> | Total: 351m<sup>2</sup>

Whilst every attempt has been made to ensure the accuracy of the floor plan contained here, measurements of areas within the property and any other item are approximate and no responsibility is taken for any error, omission, or misstatement. This plan is for illustrative purposes only and should only be used as such by any prospective purchaser.

