

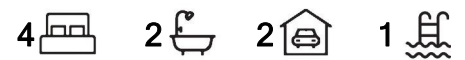


## Carramar, 9 Tahlee Retreat

Make a Splash in Your New Pool!

Welcome to 9 Tahlee Retreat, a home where space, comfort, and versatility blend seamlessly to create the perfect family haven. Step through the inviting entry and discover a thoughtfully designed layout featuring large bedrooms, two beautifully renovated bathrooms, and multiple living spaces. The spacious master suite is a retreat in itself, boasting a walk-in robe and private ensuite, while the other generously sized bedrooms are serviced by a second modern bathroom. With seamless flow from the open-plan kitchen and dining area to the sunken lounge / family room, this property is designed to cater to every aspect of family living.

Step outside, and you'll be greeted by your very own private oasis. The expansive alfresco area provides the perfect space for hosting family and friends while keeping an eye on the kids as they enjoy the sparkling pool. A second patio offers even more flexibility for outdoor entertaining or relaxation. The backyard also features a charming gazebo and a convenient shed for storage. Combined with low-maintenance landscaping, this outdoor



### For Sale

Home Open Cancelled - Under Offer

### View

[ljhooker.com.au/JD1HRD](http://ljhooker.com.au/JD1HRD)

### Contact

**Luke Calarese**

0414 367 854

[luke.calarese@ljhooker.com.au](mailto:luke.calarese@ljhooker.com.au)



**LJ Hooker Joondalup**  
**(08) 9300 2100**

**Disclaimer:** All information contained therein is gathered from relevant third parties sources. We cannot guarantee or give any warranty about the information provided. Interested parties must rely solely on their own enquiries.

space ensures maximum enjoyment with minimal effort. The extended garage and additional carport provide ample parking and extra storage, making this home as practical as it is beautiful.

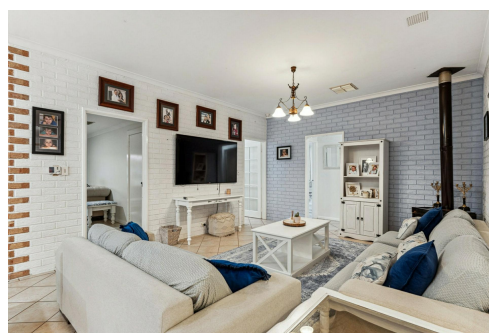
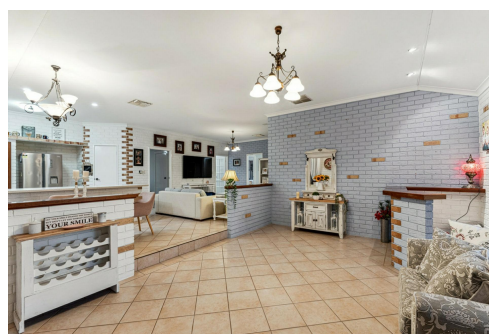
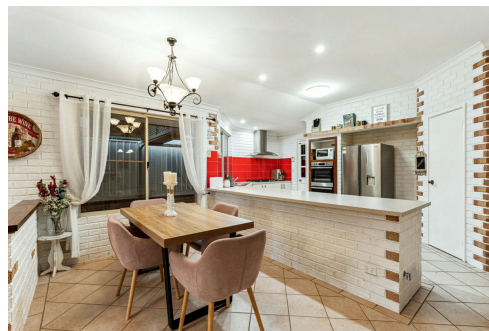
Located in the heart of Carramar, this home enjoys an enviable position close to everything your family needs. Top-rated schools such as Carramar Primary School and St Stephen's School - Carramar Campus are just moments away, making school runs a breeze. Golf enthusiasts will appreciate the proximity to the Carramar Golf Course, while nearby parks, shopping, and dining amenities add to the convenience. With its thoughtful design, family-friendly features, and unbeatable location, this property offers the ultimate lifestyle for families. Don't miss your chance to call it home!

## More About this Property

<b>Property ID</b>	JD1HRD
<b>Property Type</b>	House
<b>House Size</b>	178 m2
<b>Land Area</b>	680 m2
<b>Including</b>	Ensuite Study Air Conditioning Evaporative Cooling Toilets (2) Pool Built-in-Robes Remote Garage

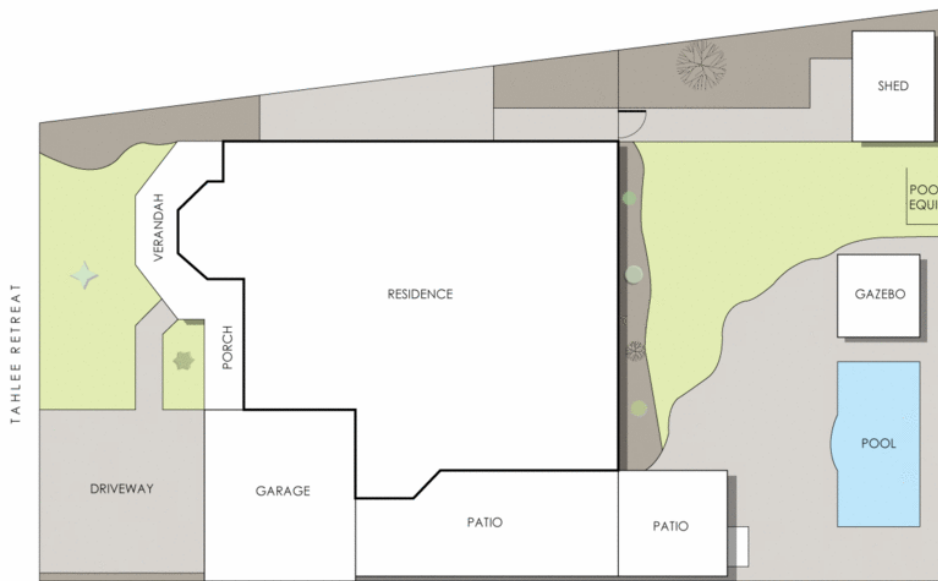
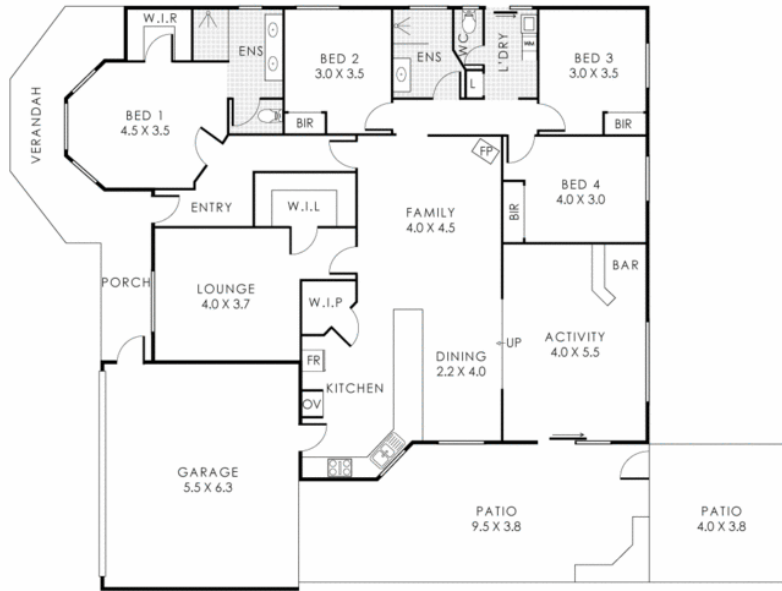
**Luke Calarese 0414 367 854**  
Sales Representative | [luke.calarese@ljhooker.com.au](mailto:luke.calarese@ljhooker.com.au)

**LJ Hooker Joondalup (08) 9300 2100**  
4/25 Delage Street, JOONDALUP WA 6027  
[joondalup.ljhooker.com.au](http://joondalup.ljhooker.com.au) | [admin.joondalup@ljhooker.com.au](mailto:admin.joondalup@ljhooker.com.au)



**LJ Hooker Joondalup**  
**(08) 9300 2100**

**Disclaimer:** All information contained therein is gathered from relevant third parties sources. We cannot guarantee or give any warranty about the information provided. Interested parties must rely solely on their own enquiries.



### 9 Tahlee Retreat, Carramar

Residence 173m<sup>2</sup> | Patio 51m<sup>2</sup> | Garage 35m<sup>2</sup> | Verandah 13m<sup>2</sup> | Porch 7m<sup>2</sup>

**Total Area 279m<sup>2</sup>**



This floorplan is for illustration purposes only to show the layout of the property. Whilst every effort has been made to ensure the accuracy of the floor plan, all measurements and total areas do not include or account for wall thickness or roof areas under eaves. CDB Creative will not be held liable or responsible for any error, omission, misrepresentation or use of any information shown on the final floor plan. Not to be used for any other purposes.  
www.cdbcreative.com.au