
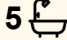
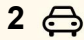




8 Toolondo Close, Caroline Springs

5  5  2 

Spacious 5-Bedroom Family Home in Quiet Court Location - Ideal for Large or Multi-Generational Living

FOR SALE
\$1,300,000

AGENTS

Yannie Hou
0416 868 512
yhou.rowville@ljhooker.com.au

AGENCY

LJ Hooker City Residential
(03) 9600 2166

Positioned in a peaceful court setting, this expansive and well-designed residence delivers the space, comfort and flexibility that modern families are searching for. With five generous bedrooms - each with its own ensuite - this home is perfectly suited to large families, multi-generational living, or those who simply value privacy and room to grow.

The intelligent floorplan offers multiple living zones, giving everyone their own space to relax or entertain. A dedicated theatre room adds a true lifestyle element, while the open-plan kitchen and dining area form the heart of the home - ideal for both everyday living and hosting guests. The kitchen is well-appointed with quality appliances, ample storage and stone benchtops, making it as practical as it is stylish.

Outdoors, the landscaped garden and alfresco area provide a low-maintenance setting for entertaining, weekend gatherings, or quiet family time. Set on a generous block in an established pocket of

All information contained therein is gathered from relevant third parties sources. We cannot guarantee or give any warranty about the information provided. Interested parties must rely solely on their own enquiries.

 **LJ Hooker**

Caroline Springs, the home also benefits from a double garage and excellent internal storage.

Convenience is another key highlight. The property is located close to local schools, shopping centres, parklands and public transport, making daily life easy for busy households.

This is a home designed for real living - space, comfort and location all working together.

Key Features

- 5 spacious bedrooms, all with private ensuites
- Multiple living areas including family zone, rumpus and theatre room
- Large kitchen with stone benchtops and abundant storage
- Open-plan living and dining area
- Outdoor alfresco and landscaped gardens
- Double garage with internal access
- Quiet court location in established neighbourhood
- Close to schools, shopping, parks and transport

MORE DETAILS

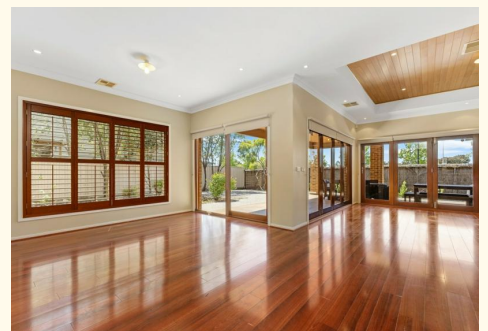
Property ID	PEMHC2
Property Type	House
Land Area	704 m2
Including	Air Conditioning
	Close to Schools
	Close to Shops
	Close to Transport

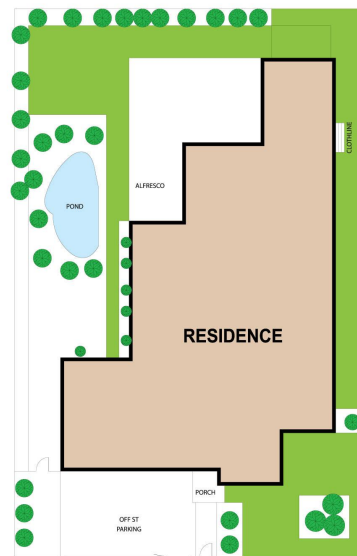
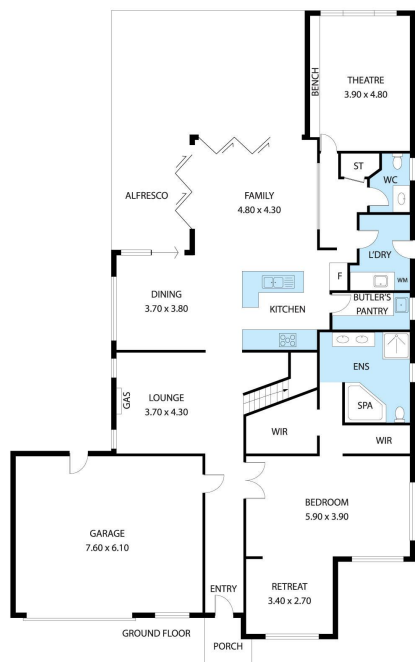
Yannie Hou 0416 868 512

Senior Property Consultant | yhou.rowville@ljhooker.com.au

LJ Hooker City Residential (03) 9600 2166

Upper Ground Floor, 439-445 Lonsdale St, MELBOURNE VIC 3000
cityresmelbourne.ljhooker.com.au |
cityresmelbourne@ljhooker.com.au





8 Toolondo Close, Caroline Springs

TOTAL APPROX. FLOOR AREA 387 SQ.M

Whilst every attempt has been made to ensure the accuracy of the floor plan contained here, measurements of doors, windows, rooms and any other items are approximate and no responsibility is taken for any error, omission, or misstatement. This plan is for illustrative purposes only and should be used as such by any prospective purchaser.

