

Carlisle, 14 Satellite Place

Luxurious Modern Oasis with Endless Potential in a Prime Carlisle Location

Welcome to a truly exceptional family home that perfectly blends sophistication, comfort, and future potential, located in the highly sought-after suburb of Carlisle.

Crafted with uncompromising attention to detail, this solidly-built double-brick home has been transformed into a contemporary sanctuary. Every corner radiates elegance and quality, from plush carpets in the bedrooms to sleek tiles with underfloor heating in the kitchen and dining area.

With a grand 325 sqm of internal living space, this residence includes four generously proportioned bedrooms, a dedicated study, two separate patios and multiple living areas to cater to both privacy and togetherness.

The main suite is a private retreat, complete with double-glazed French doors and



Disclaimer: All information contained therein is gathered from relevant third parties sources. We cannot guarantee or give any warranty about the information provided. Interested parties must rely solely on their own enquiries.



For Sale
Please Call

View
ljhooker.com.au/5FF5FFB

Contact
Saleh Manhy
0432 609 798
saleh@ljhvicpark.com.au

LJ Hooker Victoria Park | Belmont
(WA)
(08) 9473 7777

windows, a large walk-in wardrobe, and views of the easy-care garden, dotted with fruit-bearing trees and framed by a low-maintenance, reticulated native front garden.

This is a home where both relaxation and entertainment flourish, thanks to a carefully-designed outdoor living, with an inviting swimming pool, spa, and jacuzzi.

The owners didn't save money when they chose to transform the kitchen to a state-of-the-art one. It is both a culinary delight and an entertainer's dream, featuring a Caesar stone benchtop with a luxurious 40mm finish around the oversized sink, and an impressive 100mm depth on the island.

A walk-in pantry and extensive storage offer convenience, while the dining area opens seamlessly through glass doors to the patio and pool areas, creating an ideal setting for gatherings that flow effortlessly between indoors and outdoors.

Reverse-cycle air conditioning ensures comfort across every season, and LED lighting throughout the home adds a sleek, energy-efficient touch.

Parking is never an issue, with ample space to accommodate up to six cars-perfect for hosting friends and family.

Situated on an expansive 885 sqm block zoned R30, this modern oasis also holds enticing multi-dwelling development potential. (Subject to council approval)

Positioned for utmost convenience, this home offers easy access to a vibrant, connected lifestyle. Carlisle's superb location places you close to the bustling Vic. Park's cafe strip, Perth CBD, shops, schools, the stadium, and ample public transport options, ensuring a lifestyle that's as dynamic as it is luxurious.

Join us at the home open and take the first step towards making this paradise yours.



Disclaimer: All information contained therein is gathered from relevant third parties sources. We cannot guarantee or give any warranty about the information provided. Interested parties must rely solely on their own enquiries.

**LJ Hooker Victoria Park | Belmont
(WA)
(08) 9473 7777**

More About this Property

Property ID	5FF5FFB
Property Type	House
Land Area	885 m ²
Including	Ensuite Study Air Conditioning Ducted Cooling Ducted Heating Pool Spa Courtyard Dishwasher Outdoor Entertaining Built-in-Robes Fully Fenced Carpeted Close to Schools Close to Shops Close to Transport Heating Openable Windows Pool Spa

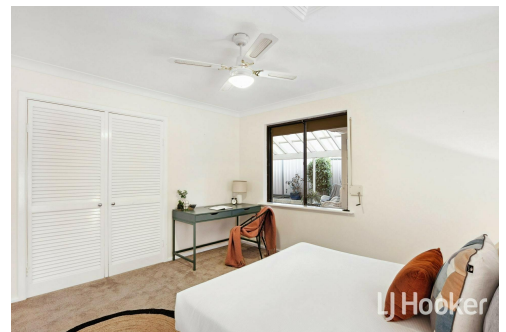
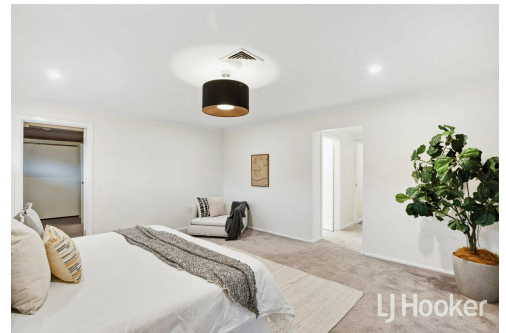
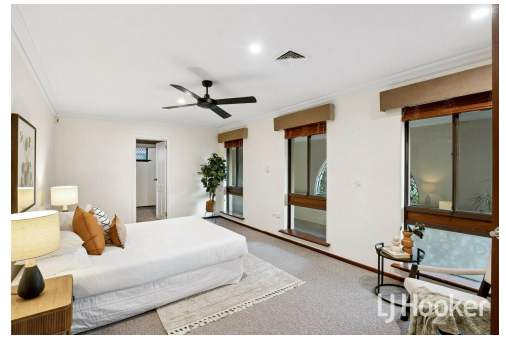
Saleh Manhy 0432 609 798

Sales Consultant | saleh@ljhvicpark.com.au

LJ Hooker Victoria Park | Belmont (WA) (08) 9473 7777

288 Albany Highway, VICTORIA PARK WA 6100

victoriapark-belmontwa.ljhooker.com.au | reception@ljhvicpark.com.au



Disclaimer: All information contained therein is gathered from relevant third parties sources.

We cannot guarantee or give any warranty about the information provided. Interested parties must rely solely on their own enquiries.

**LJ Hooker Victoria Park | Belmont
(WA)
(08) 9473 7777**