



Carindale, 55 Kilmorey Street

Rare Opportunity - A Large Home In Central Carindale!

The owners are downsizing after living in their family home for 26 years.

It's rare to find a large family home for sale in 'Central Carindale' —walking distance to Bulimba Creek Parklands and walking tracks, Westfield Shopping Centre and buses.

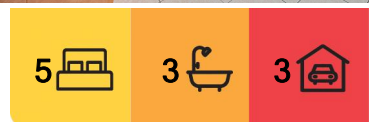
Your kids will adore the bike tracks, playgrounds and being able to play around the creek just 200 metres from their new home!

This huge, 2 storey home, with 5 bedrooms, 3 bathrooms, on a large 634m2 block, across the road from Bulimba Creek Parklands is a 'dream home' for a family!

As you enter the home, you'll be impressed by the beautiful timber floors and the quality timber staircase.

Downstairs there are two living areas for a growing family to 'have their own space.'

Enjoy the Tasman Oak timber kitchen & eating area, a sunken lounge, separate formal dining, and a spacious family room, plus a large laundry and renovated bathroom. There is



For Sale
By Negotiation

View
ljhooker.com.au/BRRBF2S

Contact
Glenn Millar
0414 991 474
gmillar@ljhpc.com.au



Disclaimer: All information contained therein is gathered from relevant third parties sources. We cannot guarantee or give any warranty about the information provided. Interested parties must rely solely on their own enquiries.

LJ Hooker Property Centre
(07) 3286 2500

a 5th bedroom/office as well. There is split system air conditioning downstairs and ducted air conditioning upstairs, with fans in all the bedrooms.

Upstairs there are 4 large bedroom, the main with ensuite and huge built-in-robres and stunning bay windows. There is also a renovated main bathroom.

Relax with friends and family with a bbq on the huge rear patio area, overlooking the lush, tropical gardens in complete privacy from neighbours.

Look at the Features :

- On A 636m2 Block, With 2 Storey Home, In 'Central Carindale'
- Stroll to Bulimba Creek Bikeway, Walking Paths & Westfield Carindale
- Walk To Local Schools - In Belmont State School Catchment
- Big Living Areas —Sunken Lounge, Separate Dining, Family Room
- 5 Bedrooms (Main With Ensuite, BIR), Or 4 Beds Plus Downstairs Office/Study
- Split System Air Con Downstairs, Ducted Aircon Up, All Bedrooms With Fans
- Large Rear Patio for Entertaining
- 2 Car Garage With Remotes, Shade Sail For Extra Cars
- You're 15mins To The Airport, The City, Or The Manly Waterfront

It's rare to find these properties for sale in this part of Carindale.

This property is being sold without a price and therefore a price guide cannot be provided. The website may have filtered the property into a price bracket for website functionality purposes. Any estimates on this page are not provided by the agent and are not a price guide.

All information contained herein is gathered from sources we consider to be reliable. However, we cannot guarantee or give any warranty about the information provided. Interested parties must solely rely on their own enquiries.

More About this Property

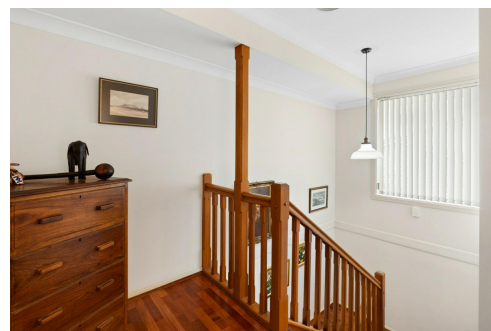
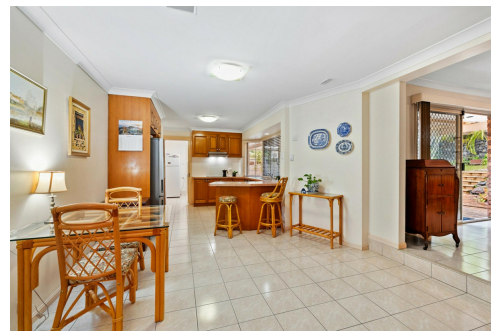
Property ID	BRRBF2S
Property Type	House
Land Area	634 m ²
Including	Air Conditioning Toilets (3) Outdoor Entertaining

Glenn Millar 0414 991 474

Sales Agent â€“ Julie Harris Realty Pty Ltd | gmillar@ljhpc.com.au

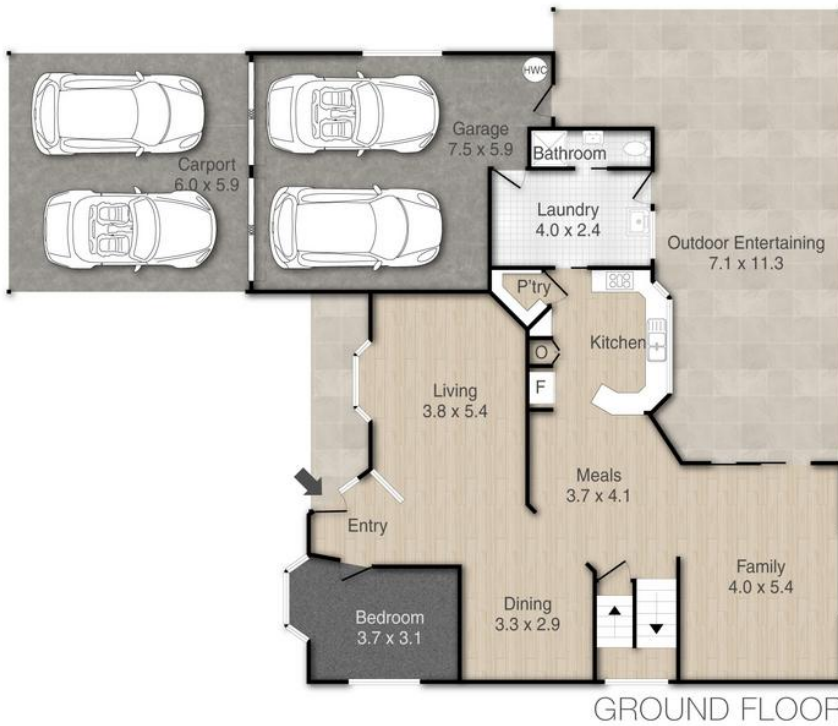
LJ Hooker Property Centre (07) 3286 2500

152-164 Shore Street West, Raby Bay, Brisbane QLD 4163
propertycentre.ljhooker.com.au | hello@ljhpc.com.au



Disclaimer: All information contained therein is gathered from relevant third parties sources. We cannot guarantee or give any warranty about the information provided. Interested parties must rely solely on their own enquiries.

LJ Hooker Property Centre
(07) 3286 2500



55 Kilmorey Street, Carindale

PLEASE NOTE THIS PLAN IS FOR MARKETING PURPOSES AND IS TO BE USED AS A GUIDE ONLY. ALL MARKINGS, MEASUREMENTS, AREAS, AND LAYOUT ARE INDICATIVE ONLY AND INTERESTED PARTIES SHOULD MAKE THEIR OWN ENQUIRIES BEFORE MAKING ANY DECISIONS. FLOOR COVERINGS INDICATED ARE FOR ILLUSTRATIVE PURPOSES ONLY AND MAY NOT ACCURATELY PORTRAY ACTUAL FLOOR COVERINGS OF THE PROPERTY. NO GUARANTEES ARE MADE REGARDING THE INFORMATION CONTAINED IN THIS PLAN AND NO LIABILITY FOR ANY INACCURACIES IS ACCEPTED.